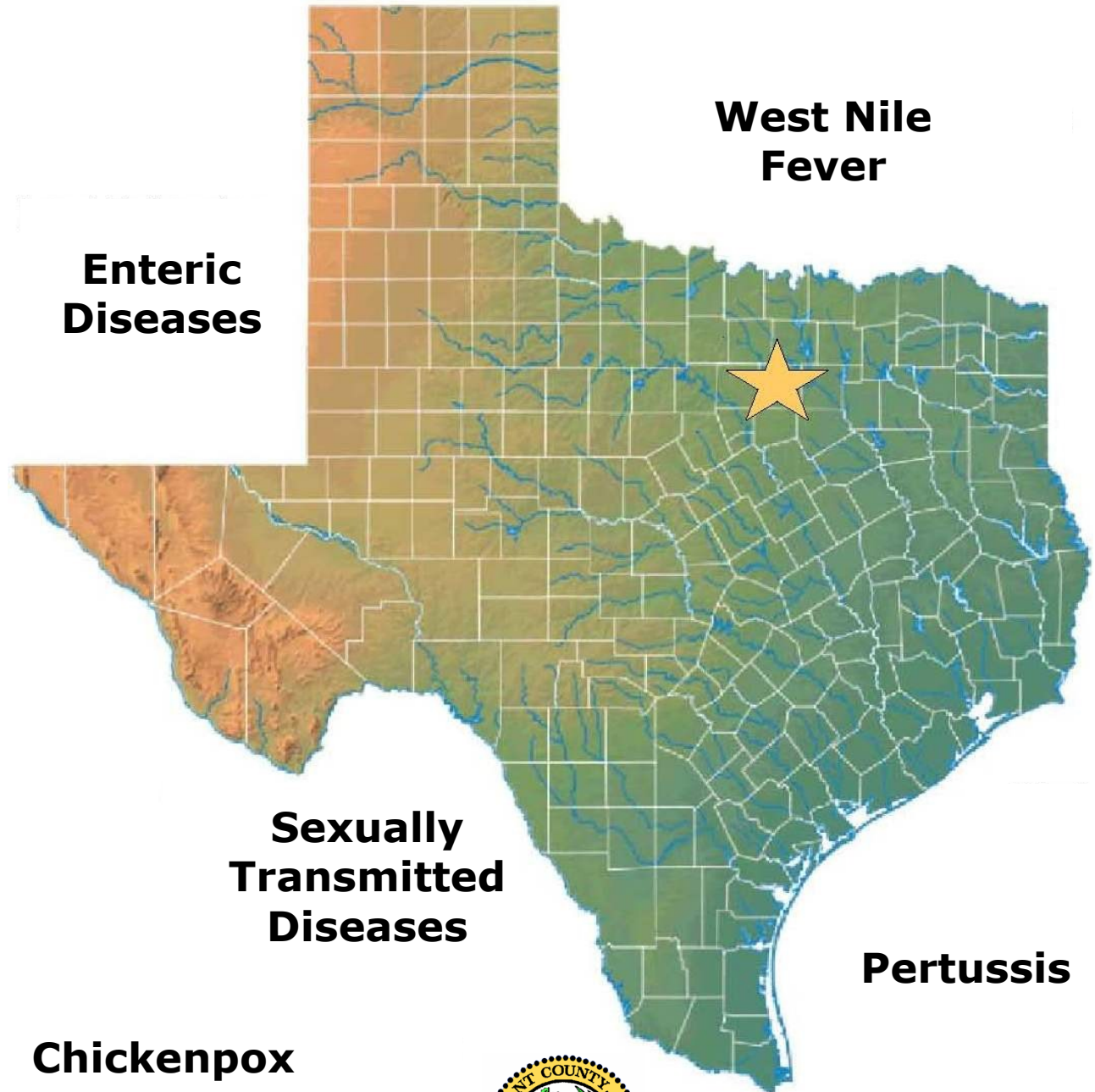


Communicable Diseases

Tarrant County 2013



**Enteric
Diseases**

**West Nile
Fever**

**Sexually
Transmitted
Diseases**

Pertussis

Chickenpox



Tarrant County Public Health
Safeguarding our community's health

Communicable Diseases Tarrant County, 2013



Tarrant County Public Health

*Division of Epidemiology and Health Information
Tarrant County Public Health
1101 S. Main Street
Fort Worth, Texas 76104*

*Communicable Disease Reporting: (817) 321-5350
24/7 Disease Reporting: (817) 994-3708*

www.tarrantcounty.com/ehealth

Communicable Diseases 2013 Report Team

Nicolette Janoski, MPH, CPH
Epidemiologist
Tarrant County Public Health

Michelle S. Markham, MS
GIS Analyst
Tarrant County Public Health

Russell Jones, MPH
Division Manager & Chief Epidemiologist
Tarrant County Public Health

Suggested Citation

Communicable Diseases, Tarrant County, 2012. Tarrant County Public Health, August 2013.

Table of Contents

Reportable diseases in Tarrant County	1
Background information for statistical summaries	1
Notifiable conditions in Tarrant County	2
Tarrant County population distributions by gender, race/ethnicity, and age group	3
Ten leading communicable diseases in Tarrant County	4
Selected communicable diseases by city	7
Selected communicable diseases by ZIP code.....	10
Disease specific information and definitions	16
Chlamydia	17
Gonorrhea	20
Pertussis (whooping cough)	23
Salmonellosis	26
Early syphilis	29
Campylobacteriosis	32
HIV	35
<i>Streptococcus pneumoniae</i> , invasive	38
Varicella (chickenpox)	41
Shigellosis	44

List of Tables

Table 1:	Notifiable conditions, 2013	2
Table 2:	Population estimates by gender, Tarrant County, 2013	3
Table 3:	Population estimates by race/ethnicity, Tarrant County, 2013	3
Table 4:	Population estimates by age group, Tarrant County, 2013	3
Table 5:	Ten leading communicable diseases overall and by gender, Tarrant County, 2013	4
Table 6:	Ten leading communicable diseases by race/ethnicity, Tarrant County, 2013	5
Table 7:	Ten leading communicable diseases by age group, Tarrant County, 2013	6
Table 8a-c:	Selected communicable diseases by city, Tarrant County, 2013.....	7
Table 9a-f:	Selected communicable diseases by ZIP code, Tarrant County, 2013	10

List of Figures

Figure 1:	Chlamydia, Tarrant County, 2009-2013	17
Figure 2:	Chlamydia month, Tarrant County, 2013	17
Figure 3:	Chlamydia by gender, Tarrant County, 2013.....	18
Figure 4:	Chlamydia by race/ethnicity, Tarrant County, 2013	18
Figure 5:	Chlamydia by age group (in years), Tarrant County, 2013	18
Figure 6:	Geographic distribution of chlamydia by ZIP code, Tarrant County, 2013	19
Figure 7:	Gonorrhea, Tarrant County, 2009-2013	20
Figure 8:	Gonorrhea by month, Tarrant County, 2013	20
Figure 9:	Gonorrhea by gender, Tarrant County, 2013	21
Figure 10:	Gonorrhea by race/ethnicity, Tarrant County, 2013.....	21
Figure 11:	Gonorrhea by age group (in years), Tarrant County, 2013	21
Figure 12:	Geographic distribution of gonorrhea by ZIP code, Tarrant County, 2013	22
Figure 13:	Pertussis (whooping cough), Tarrant County, 2009-2013	23
Figure 14:	Pertussis (whooping cough) by month, Tarrant County, 2013	23
Figure 15:	Pertussis (whooping cough) by gender, Tarrant County, 2013	24
Figure 16:	Pertussis (whooping cough) by race/ethnicity, Tarrant County, 2013	24
Figure 17:	Pertussis (whooping cough) by age group (in years), Tarrant County, 2013	24

Figure 18:	Geographic distribution of Pertussis (whooping cough) by ZIP code, Tarrant County, 2013	25
Figure 19:	Salmonellosis, Tarrant County, 2009-2013	26
Figure 20:	Salmonellosis by month, Tarrant County, 2013	26
Figure 21:	Salmonellosis by gender, Tarrant County, 2013.....	27
Figure 22:	Salmonellosis by race/ethnicity, Tarrant County, 2013	27
Figure 23:	Salmonellosis by age group (in years), Tarrant County, 2013	27
Figure 24:	Geographic distribution of salmonellosis by ZIP code, Tarrant County, 2013	28
Figure 25:	Early syphilis, Tarrant County, 2009-2013	29
Figure 26:	Early syphilis by month, Tarrant County, 2013	29
Figure 27:	Early syphilis by gender, Tarrant County, 2013	30
Figure 28:	Early syphilis by race/ethnicity, Tarrant County, 2013	30
Figure 29:	Early syphilis by age group (in years), Tarrant County, 2013.....	30
Figure 30:	Geographic distribution of early syphilis by ZIP code, Tarrant County, 2013 ..	31
Figure 31:	Campylobacteriosis, Tarrant County, 2009-2013	32
Figure 32:	Campylobacteriosis by month, Tarrant County, 2013	32
Figure 33:	Campylobacteriosis by gender, Tarrant County, 2013.....	33
Figure 34:	Campylobacteriosis by race/ethnicity, Tarrant County, 2013	33
Figure 35:	Campylobacteriosis by age group (in years), Tarrant County, 2013	33
Figure 36:	Geographic distribution of campylobacteriosis by ZIP code, Tarrant County, 2013	34
Figure 37:	HIV, Tarrant County, 2009-2013	35
Figure 38:	HIV by month, Tarrant County, 2013	35
Figure 39:	HIV by gender, Tarrant County, 2013	36
Figure 40:	HIV by race/ethnicity, Tarrant County, 2013	36
Figure 41:	HIV by age group (in years), Tarrant County, 2013.....	36
Figure 42:	Geographic distribution of HIV by ZIP code, Tarrant County, 2013	37
Figure 43:	Streptococcus pneumonia, invasive, Tarrant County, 2009-2013	38
Figure 44:	Streptococcus pneumonia, invasive by month, Tarrant County, 2013	38
Figure 45:	Streptococcus pneumonia, invasive by gender, Tarrant County, 2013.....	39
Figure 46:	Streptococcus pneumonia, invasive fever by race/ethnicity, Tarrant County, 2013	39
Figure 47:	Streptococcus pneumonia, invasive by age group (in years), Tarrant County, 2013	39
Figure 48:	Geographic distribution of Streptococcus pneumonia, invasive by ZIP code, Tarrant County, 2013	40
Figure 49:	Varicella (chickenpox), Tarrant County, 2009-2013.....	41
Figure 50:	Varicella (chickenpox) by month, Tarrant County, 2013.....	41

Figure 51:	Varicella (chickenpox) by gender, Tarrant County, 2013	42
Figure 52:	Varicella (chickenpox) by race/ethnicity, Tarrant County, 2013.....	42
Figure 53:	Varicella (chickenpox) by age group (in years), Tarrant County, 2013	42
Figure 54:	Geographic distribution of Varicella (chickenpox) by ZIP code, Tarrant County, 2013	43
Figure 55:	<i>Shigellosis</i> , Tarrant County, 2009-2013.....	44
Figure 56:	<i>Shigellosis</i> by month, Tarrant County, 2013.....	44
Figure 57:	<i>Shigellosis</i> by gender, Tarrant County, 2013	45
Figure 58:	<i>Shigellosis</i> by race/ethnicity, Tarrant County, 2013	45
Figure 59:	<i>Shigellosis</i> by age group (in years), Tarrant County, 2013.	45
Figure 60:	Geographic distribution of <i>Shigellosis</i> by ZIP code, Tarrant County, 2013	46

Reportable Diseases in Tarrant County

Several Texas laws (Health & Safety Code, chapter 81, 84, and 87) require specific information regarding notifiable conditions to be provided to the local health department. Tarrant County Public Health is the designated health department for reporting notifiable conditions in the county. ***Health care providers, hospitals, laboratories, schools, and others are required to report patients who are suspected of having a notifiable condition*** (chapter 97, Title 25, Texas Administrative Code).

All notifiable conditions in Tarrant County, as well as Texas, for 2013 are listed in Table 1. In addition to these, any outbreak, exotic diseases, and unusual group expressions of disease must be reported. All diseases must be reported by ***name, age, gender, race/ethnicity, date of birth, address, telephone number, disease, date of onset, method of diagnosis, and name, address, and telephone number of physician.***

Background Information for Statistical Summaries

The frequency and incidence rate of communicable diseases are presented overall, by gender, by race/ethnicity, by age group, by city, and by ZIP code. Incidence rates are calculated as follows:

- Numerator – 2013 incidence of disease in Tarrant County
- Denominator – 2013 Tarrant County population at risk (2010 population for rates by city and ZIP code)
- Rate – per 100,000 population

Incidence rate is an essential and valuable public health measure; however, the interpretation of the rate should be made with caution. Rates based on numbers less than 20 are not recommended for reliable comparison because such rates can fluctuate widely each year. The tables in this report include rates for diseases with five or more cases. Conditions with less than five cases are not presented to protect confidentiality.

The 2013 Tarrant County population estimates used to calculate incidence rates overall, by gender, by race/ethnicity, and by age group are listed in Tables 2–4. Population estimates were obtained from the Texas Department of State Health Services. The 2010 population estimates by city and ZIP code were obtained from the US Census Bureau, 2010 Census.

Notifiable Conditions

Table 1. Notifiable conditions, Tarrant County, 2013

Conditions Immediately Reportable	Cases	Conditions Reportable Within One Week	Cases
Anthrax	0	Acquired Immune Deficiency Syndrome (AIDS)	43
Botulism, foodborne	0	Amebiasis	7
Diphtheria	0	Arbovirus infection (excluding West Nile)*	0
<i>Haemophilus influenzae</i> type b infections, invasive	0	Asbestosis	0
Measles (rubeola)	16	Botulism, infant, wound, and other	0
Meningococcal infections, invasive	0	Campylobacteriosis	197
Plague (<i>Yersinia pestis</i>)	0	Chancroid	0
Poliomyelitis, acute paralytic	0	Chickenpox (varicella)	161
Rabies, human	0	<i>Chlamydia trachomatis</i> infection	8,482
Severe Acute Respiratory Syndrome (SARS)	0	Creutzfeldt-Jakob disease	0
Smallpox	0	Cryptosporidiosis	38
Staphylococcus aureus, Vancomycin-resistant (VISA & VRSA)	0	Cyclosporiasis	45
Tularemia	0	Cysticercosis	0
Viral hemorrhagic fever, including Ebola	0	Dengue	5
Yellow fever	0	Ehrlichiosis	0
		Encephalitis, non-arboviral	0
		Encephalitis, arboviral (West Nile)	5
		<i>Escherichia coli</i> , enterohemorrhagic	49
		Gonorrhea	2,160
		Hansen's disease (leprosy)	0
		Hantavirus infection	0
		Hemolytic Uremic Syndrome (HUS)	<5
		Hepatitis B (acute)	8
		Hepatitis C (acute)	<5
		Hepatitis E (acute)	<5
		Human Immunodeficiency Virus (HIV) infection	176
		Legionellosis	19
		Leishmaniasis	0
		Listeriosis	<5
		Lyme disease	6
		Malaria	12
		Bacterial and other Meningitis	<5
		Mumps	0
		Relapsing fever	0
		Salmonellosis (excluding typhoid fever)	342
		Shigellosis	141
		Silicosis	0
		Spotted fever group rickettsioses	<5
		Streptococcal disease (group A, B, <i>S. pneumoniae</i>), invasive	291
		Syphilis - all other stages	145
		<i>Taenia solium</i> and undifferentiated <i>Taenia</i> infection	0
		Tetanus	0
		Trichinosis	0
		Typhus	<5
		West Nile Fever	<5
		Yersiniosis	<5
Conditions Reportable Within One Working Day			
	Cases		
Brucellosis	<5		
Hepatitis A (acute)	<5		
Hepatitis B, perinatal	0		
Influenza-associated pediatric mortality	0		
Pertussis	700		
Q fever	0		
Rubella (including congenital)	0		
Syphilis-primary, secondary & early latent stages	253		
Tuberculosis (including all <i>M. tuberculosis</i> complex)	70		
<i>Vibrio</i> infection, including cholera	<5		

Note: This table represents communicable conditions that were reportable in 2013. Additions/changes made for 2014 are not presented in Table 1. Conditions with less than five cases not presented to protect confidentiality.

* Arboviral infections include neuroinvasive and non-neuroinvasive California serogroup including Cache Valley, Eastern Equine (EEE), Dengue, Powassan, St. Louis Encephalitis, West Nile and Western Equine (WEE).

Data source: Tarrant County Public Health

Tarrant County Population Distributions by Gender, Race/Ethnicity, and Age Group

Table 2. Population estimates by gender, Tarrant County, 2013

Gender	Population	Percent
Female	967,103	50.9%
Male	932,337	49.1%
Total	1,899,440	100.0%

Data source: Texas Department of State Health Services

Table 3. Population estimates by race/ethnicity, Tarrant County, 2013

Race/Ethnicity	Population	Percent
Hispanic	542,883	28.6%
Non-Hispanic Black	284,323	15.0%
Non-Hispanic White	929,323	48.9%
Other	142,911	7.5%
Total	1,899,440	100.0%

Data source: Texas Department of State Health Services

Table 4. Population estimates by age group, Tarrant County, 2013

Age Group (in years)	Population	Percent
0 to 4	139,728	7.4%
5 to 9	148,566	7.8%
10 to 14	149,022	7.8%
15 to 19	140,493	7.4%
20 to 24	130,337	6.9%
25 to 34	283,154	14.9%
35 to 44	266,529	14.0%
45 to 54	259,367	13.7%
55 to 64	200,204	10.5%
65 and over	182,040	9.6%
Total	1,899,440	100.0%

Data source: Texas Department of State Health Services

Communicable Diseases in Tarrant County

Table 5. Ten leading communicable diseases overall and by gender, Tarrant County, 2013

	Overall n (Rate)	Female n (Rate)	Male n (Rate)
1	Chlamydia 8,482 (446.6)	Chlamydia 6,380 (659.7)	Chlamydia 2,102 (225.5)
2	Gonorrhea 2,160 (113.7)	Gonorrhea 1,098 (113.5)	Gonorrhea 1,062 (113.9)
3	Pertussis 700 (36.9)	Pertussis 383 (39.6)	Pertussis 317 (34.0)
4	Salmonellosis 342 (18.0)	Salmonellosis 173 (17.9)	Early Syphilis 221 (23.7)
5	Early Syphilis 253 (13.3)	Campylobacteriosis 90 (9.3)	Salmonellosis 169 (18.1)
6	Campylobacteriosis 219 (11.5)	S. pneumoniae, invasive 86 (8.9)	HIV 141 (15.1)
7	HIV 176 (9.3)	Varicella 82 (8.5)	Campylobacteriosis 107 (11.5)
8	S. pneumoniae, invasive 164 (8.6)	Shigellosis 71 (7.3)	Syphilis, Other 102 (10.9)
9	Varicella 161 (8.5)	Group B, Streptococci 45 (4.7)	Varicella 79 (8.5)
10	Shigellosis 141 (7.4)	Syphilis, Other 43 (4.4)	S. pneumoniae, invasive 78 (8.4)

*n = number of cases; Rate per 100,000 population
Date Source: Tarrant County Public Health*

Table 6. Ten leading communicable diseases by race/ethnicity, Tarrant County, 2013[†]

	Hispanic n (Rate)	Non-Hispanic Black n (Rate)	Non-Hispanic White n (Rate)	Other n (Rate)
1	Chlamydia 2,040 (375.8)	Chlamydia 2,706 (951.7)	Chlamydia 1821 (195.9)	Chlamydia 116 (81.2)
2	Gonorrhea 355 (65.4)	Gonorrhea 1,079 (379.5)	Gonorrhea 434 (46.7)	Tuberculosis 17 (11.9)
3	Pertussis 333 (61.3)	Early Syphilis 102 (35.9)	Pertussis 277 (29.8)	Gonorrhea 15 (10.5)
4	Early Syphilis 71 (13.1)	HIV 96 (33.8)	Salmonellosis 189 (20.3)	Salmonellosis 14 (9.8)
5	Salmonellosis 63 (11.6)	Pertussis 72 (25.3)	Campylobacteriosis 101 (10.9)	Pertussis 11 (7.7)
6	Campylobacteriosis 62 (11.4)	Syphilis, Latent 63 (22.2)	Streptococcus pneumoniae, invasive 100 (10.8)	Early Syphilis/ Varicella 7 (4.9)
7	Shigellosis 59 (10.9)	Salmonellosis 40 (14.1)	Early Syphilis 73 (7.9)	Campylobacteriosis 6 (4.2)
8	Syphilis, Latent 40 (7.4)	Shigellosis 31 (10.9)	Varicella 57 (6.1)	HIV 5 (3.5)
9	Varicella 37 (6.8)	Streptococcus pneumoniae, invasive 24 (8.4)	Group B Streptococcus/ HIV 51 (5.5)	---
10	HIV 24 (4.4)	Tuberculosis 22 (7.7)	Shigellosis 40 (4.3)	

n = number of cases; Rate per 100,000 population

Rates based on less than 20 cases are considered unstable and should be interpreted with caution

Less than five cases not reported

[†]Rankings for race/ethnicity should be interpreted with caution due to missing data; Race/ethnicity data are missing for 33% of acute Hepatitis B cases, 19% of Chlamydia cases, 17% of acute Hepatitis A cases, 16% of Varicella cases, 12% of Gonorrhea cases, 11% of Aseptic Meningitis cases, 11% of Cryptosporidiosis cases, and 11% of Group B Streptococcus cases

Data source: Tarrant County Public Health

Table 7. Ten leading communicable diseases by age group, Tarrant County, 2013

	0 - 4 Yrs n (Rate)	5 - 9 Yrs n (Rate)	10 - 14 Yrs n (Rate)	15 - 19 Yrs n (Rate)	20 - 24 Yrs n (Rate)
1	Pertussis 298 (213.3)	Pertussis 195 (131.3)	Pertussis 128 (85.9)	Chlamydia 3,205 (2,281.3)	Chlamydia 2,263 (1736.3)
2	Salmonellosis 122 (87.3)	Shigellosis 52 (35.0)	Chlamydia 98 (65.8)	Gonorrhea 757 (538.8)	Gonorrhea 614 (471.1)
3	Varicella 52 (37.2)	Salmonellosis 38 (25.6)	Salmonellosis 31 (20.8)	Early Syphilis 55 (39.1)	Early Syphilis 115 (88.2)
4	Campylobacteriosis 42 (30.1)	Varicella 37 (24.9)	Varicella 27 (18.1)	HIV 45 (32.0)	Human Immunodeficiency Virus 62 (47.6)
5	Shigellosis 40 (28.6)	Campylobacteriosis 21 (14.1)	Gonorrhea 25 (16.8)	Pertussis 26 (18.5)	Syphilis, Other 49 (37.6)
6	E.Coli STEC 20 (14.3)	E.Coli STEC 5 (3.4)	Campylobacteriosis 8 (5.4)	Syphilis, Other 21 (14.9)	Salmonellosis 8 (6.1)
7	Group B Streptococcal 13 (9.3)	---	Shigellosis 7 (4.7)	Salmonellosis 13 (9.3)	Streptococcus pneumoniae, invasive 6 (4.6)
8	Streptococcus pneumoniae, invasive 12 (8.6)	---	---	Campylobacteriosis 12 (8.5)	Campylobacteriosis/ Varicella/ Pertussis/ Shigellosis 5 (3.8)
9	Chlamydia/ Syphilis, other 8 (5.7)	---	---	Varicella 9 (6.4)	---
10	Measles 6 (4.3)	---	---	Shigellosis 6 (4.3)	---

n = number of cases; Rate per 100,000 population
 Rates based on less than 20 cases are considered unstable and should be interpreted with caution
 Less than five cases not reported
 E. coli STEC = Shiga Toxin-producing Escherichia coli
 HIV data are preliminary, therefore the number of cases may change
 Data source: Tarrant County Public Health

	25 - 34 Yrs n (Rate)	35 - 44 Yrs n (Rate)	45 - 54 Yrs n (Rate)	55 - 64 Yrs n (Rate)	65 + Yrs n (Rate)
1	Chlamydia 421 (148.7)	Chlamydia 94 (35.3)	Chlamydia 94 (36.2)	S. pneumoniae, inv 31 (15.5)	S. pneumoniae, inv 58 (31.9)
2	Gonorrhea 161 (56.9)	Gonorrhea 48 (18.0)	Gonorrhea 48 (18.5)	Salmonellosis 28 (14.0)	Salmonellosis 35 (19.2)
3	Early Syphilis 36 (12.7)	Early Syphilis 27 (10.1)	S. pneumoniae, inv. 28 (10.8)	Group B Streptococcus 22 (11.0)	Group B Streptococcus 29 (15.9)
4	HIV 30 (10.6)	Salmonellosis/ Syphilis, other 22 (8.3)	Early Syphilis 27 (10.4)	Chlamydia 20 (10.0)	Campylobacteriosis 26 (14.3)
5	Campylobacteriosis 27 (9.5)	HIV 19 (7.1)	Campylobacteriosis/ Syphilis, Other 22 (8.5)	Campylobacteriosis 19 (9.5)	Tuberculosis 14 (7.7)
6	Syphilis, other 25 (8.8)	S. pneumoniae, inv 18 (6.8)	Salmonellosis 21 (8.1)	Gonorrhea/TB 17 (8.5)	Group A Streptococcus 10 (5.5)
7	Salmonellosis 24 (8.5)	Campylobacteriosis 15 (5.6)	HIV 19 (7.3)	HIV/ Varicella (4.5) 11 (5.5)	Cryptosporidium 9 (4.9)
8	Pertussis 19 (6.7)	Pertussis 11 (4.1)	Cyclosporiasis 13 (5.0)	Cyclosporiasis/ Syphilis, other 11 (5.5)	Varicella 7 (3.8)
9	AIDS 16 (5.7)	Cyclosporiasis 10 (3.8)	Group B Streptococcus 12 (4.6)	HIV/Varicella 9 (4.5)	Legionellosis 5 (2.7)
10	TB/ Varicella/ Shigellosis 11 (3.9)	TB/ Shigellosis/ Group B Streptococcus 9 (3.4)	Tuberculosis 11 (4.2)	Early Syphilis 5 (2.5)	---

n = number of cases; Rate per 100,000 population
 Rates based on less than 20 cases are considered unstable and should be interpreted with caution
 Less than five cases not reported
 E. coli STEC = Shiga Toxin-producing Escherichia coli
 HIV data are preliminary, therefore the number of cases may change
 Data source: Tarrant County Public Health

Communicable Diseases by City

Table 8a. Selected communicable diseases by city, Tarrant County, 2013

City	Campylobacteriosis		Chlamydia		Early Syphilis		Group B Streptococcus	
	Cases	Rate	Cases	Rate	Cases	Rate	Cases	Rate
Arlington	24	6.6	1,855	507.6	54	14.8	17	4.7
Azle	<5	@	11	100.5	0	0.0	<5	@
Bedford	6	12.8	181	385.3	9	19.2	5	10.6
Benbrook	<5	@	27	127.2	0	0.0	<5	@
Blue Mound	0	0.0	9	375.9	0	0.0	0	0.0
Burleson	<5	@	39	106.3	< 5	@	<5	@
Colleyville	7	30.7	24	105.2	0	0.0	<5	@
Crowley	<5	@	93	724.4	0	0.0	<5	@
Eules	5	9.8	225	438.8	9	17.6	6	11.7
Everman	0	0.0	36	589.4	0	0.0	35	573.0
Forest Hill	<5	@	56	453.3	< 5	@	0	0.0
Fort Worth	97	13.1	4,750	640.8	154	20.8	0	0.0
Grand Prairie	<5	@	97	55.3	< 5	@	<5	@
Grapevine	7	15.1	110	237.4	< 5	@	<5	@
Haltom City	<5	@	185	436.2	< 5	@	<5	@
Haslet	0	0.0	19	1252.5	0	0.0	0	0.0
Hurst	5	13.4	143	383.0	< 5	@	<5	@
Keller	10	25.2	133	335.6	< 5	@	0	0.0
Kennedale	<5	@	22	325.3	0	0.0	0	0.0
Lake Worth	0	0.0	<5	@	0	0.0	0	0.0
Lakeside	0	0.0	<5	@	0	0.0	0	0.0
Mansfield	0	0.0	181	321.1	< 5	@	<5	@
North Richland Hills	5	7.9	100	157.9	< 5	@	5	7.9
Pantego	0	0.0	<5	@	< 5	@	0	0.0
Richland Hills	0	0.0	19	243.6	< 5	@	<5	@
River Oaks	0	0.0	20	269.3	< 5	@	<5	@
Saginaw	<5	@	42	212.1	< 5	@	0	0.0
Sansom Park	<5	@	0	0.0	0	0.0	0	0.0
Southlake	<5	@	26	97.8	0	0.0	<5	@
Watauga	<5	@	35	149.0	< 5	@	<5	@
Westworth Village	0	0.0	<5	@	0	0.0	0	0.0
White Settlement	0	0.0	15	93.1	0	0.0	0	0.0

Rate per 100,000 population

Less than five cases not reported to protect confidentiality; @ = rate not calculated for less than five cases

Rates based on less than 20 cases are considered unstable and should be interpreted with caution.

Data source: Tarrant County Public Health

Table 8b. Selected communicable diseases by city, Tarrant County, 2013

City	Gonorrhea		HIV		Pertussis		Salmonellosis	
	Cases	Rate	Cases	Rate	Cases	Rate	Cases	Rate
Arlington	444	121.5	58	15.9	101	27.6	56	15.3
Azle	< 5	@	0	0.0	<5	@	6	54.8
Bedford	42	89.4	< 5	@	13	27.7	8	17.0
Benbrook	10	47.1	0	0.0	7	33.0	8	37.7
Blue Mound	< 5	@	0	0.0	0	0.0	0	0.0
Burleson	6	16.4	< 5	@	7	19.1	< 5	@
Colleyville	< 5	@	0	0.0	5	21.9	8	35.1
Crowley	22	171.4	< 5	@	6	46.7	5	38.9
Eules	47	91.7	5	9.8	8	15.6	17	33.2
Everman	14	229.2	< 5	@	<5	@	0	0.0
Forest Hill	21	170.0	< 5	@	7	56.7	< 5	@
Fort Worth	1,310	176.7	85	11.5	427	57.6	133	17.9
Grand Prairie	27	15.4	< 5	@	7	4.0	6	3.4
Grapevine	11	23.7	< 5	@	<5	@	7	15.1
Haltom City	28	66.0	< 5	@	14	33.0	7	16.5
Haslet	< 5	@	0	0.0	<5	@	< 5	@
Hurst	27	72.3	< 5	@	8	21.4	11	29.5
Keller	17	42.9	< 5	@	19	47.9	16	40.4
Kennedale	10	147.9	0	0.0	<5	@	< 5	@
Lake Worth	0	0.0	0	0.0	<5	@	< 5	@
Lakeside	0	0.0	0	0.0	0	0.0	0	0.0
Mansfield	41	72.7	< 5	@	15	26.6	13	23.1
North Richland Hill	29	45.8	< 5	@	24	37.9	9	14.2
Pantego	0	0.0	0	0.0	<5	@	< 5	@
Richland Hills	11	141.0	< 5	@	0	0.0	3	38.5
River Oaks	< 5	@	0	0.0	<5	@	0	0.0
Saginaw	11	55.5	0	0.0	<5	@	< 5	@
Sansom Park	0	0.0	0	0.0	0	0.0	0	0.0
Southlake	< 5	@	0	0.0	6	22.6	6	22.6
Watauga	6	25.5	< 5	@	<5	@	6	25.5
Westworth Village	0	0.0	0	0.0	0	0.0	0	0.0
White Settlement	5	31.0	0	0.0	0	0.0	0	0.0

Rate per 100,000 population

Less than five cases not reported to protect confidentiality; @ = rate not calculated for less than five cases

Rates based on less than 20 cases are considered unstable and should be interpreted with caution.

Data source: Tarrant County Public Health

Table 8c. Selected communicable diseases by city, Tarrant County, 2013

City	Shigellosis		<i>S. pneumoniae</i> , inv.		Tuberculosis		Varicella	
	Cases	Rate	Cases	Rate	Cases	Rate	Cases	Rate
Arlington	30	8.2	23	6.3	15	4.1	34	9.3
Azle	0	0.0	< 5	@	0	0.0	< 5	@
Bedford	< 5	@	11	23.4	0	0.0	0	0.0
Benbrook	< 5	@	< 5	@	< 5	@	0	0.0
Blue Mound	0	0.0	0	0.0	0	0.0	0	0.0
Burleson	0	0.0	< 5	@	0	0.0	0	0.0
Colleyville	< 5	@	< 5	@	0	0.0	0	0.0
Crowley	< 5	@	< 5	@	0	0.0	< 5	@
Eules	< 5	@	< 5	@	< 5	@	5	9.8
Everman	0	0.0	0	0.0	0	0.0	0	0.0
Forest Hill	< 5	@	< 5	@	0	0.0	< 5	@
Fort Worth	69	9.3	83	11.2	37	5.0	66	8.9
Grand Prairie	6	3.4	< 5	@	< 5	@	< 5	@
Grapevine	< 5	@	< 5	@	0	0.0	< 5	@
Haltom City	9	21.2	5	11.8	< 5	@	< 5	@
Haslet	0	0.0	< 5	@	0	0.0	< 5	@
Hurst	< 5	@	7	18.7	0	0.0	< 5	@
Keller	< 5	@	0	0.0	< 5	@	9	22.7
Kennedale	0	0.0	< 5	@	< 5	@	< 5	@
Lake Worth	< 5	@	0	0.0	0	0.0	0	0.0
Lakeside	0	0.0	0	0.0	0	0.0	0	0.0
Mansfield	< 5	@	< 5	@	5	8.9	8	14.2
North Richland Hill	0	0.0	< 5	@	< 5	@	< 5	@
Pantego	0	0.0	0	0.0	0	0.0	0	0.0
Richland Hills	0	0.0	0	0.0	0	0.0	< 5	@
River Oaks	0	0.0	0	0.0	0	0.0	0	0.0
Saginaw	< 5	@	< 5	@	0	0.0	< 5	@
Sansom Park	0	0.0	0	0.0	0	0.0	0	0.0
Southlake	< 5	@	0	0.0	0	0.0	5	18.8
Watauga	< 5	@	< 5	@	0	0.0	< 5	@
Westworth Village	0	0.0	0	0.0	0	0.0	0	0.0
White Settlement	< 5	@	0	0.0	0	0.0	0	0.0

Rate per 100,000 population

Less than five cases not reported to protect confidentiality; @ = rate not calculated for less than five cases

Rates based on less than 20 cases are considered unstable and should be interpreted with caution.

Data source: Tarrant County Public Health

Communicable Diseases by ZIP Code

Table 9a. Selected communicable diseases by ZIP code, Tarrant County, 2013

ZIP Code	Campylobacteriosis		Chlamydia		Early Syphilis		Group B Streptococcus	
	Cases	Rate	Cases	Rate	Cases	Rate	Cases	Rate
75050	< 5	@	24	58.5	< 5	@	< 5	@
75051	0	0.0	12	30.5	< 5	@	< 5	@
75052	< 5	@	56	62.9	< 5	@	0	0.0
75054	0	0.0	< 5	@	0	0.0	< 5	@
76001	< 5	@	119	390.7	5	16.4	< 5	@
76002	< 5	@	124	409.7	< 5	@	< 5	@
76006	< 5	@	150	662.6	6	26.5	< 5	@
76008	0	0.0	0	0.0	0	0.0	0	0.0
76010	< 5	@	370	664.2	< 5	@	< 5	@
76011	< 5	@	143	662.2	13	60.2	< 5	@
76012	< 5	@	103	400.9	< 5	@	0	0.0
76013	< 5	@	137	446.5	6	19.6	< 5	@
76014	0	0.0	204	598.7	6	17.6	< 5	@
76015	0	0.0	80	480.2	< 5	@	< 5	@
76016	< 5	@	69	223.6	0	0.0	< 5	@
76017	< 5	@	194	433.8	< 5	@	< 5	@
76018	< 5	@	122	452.9	< 5	@	< 5	@
76020	< 5	@	10	44.9	0	0.0	< 5	@
76021	5	14.8	132	392.0	< 5	@	5	14.8
76022	< 5	@	47	355.7	< 5	@	0	0.0
76028	< 5	@	39	65.3	< 5	@	< 5	@
76034	7	30.8	24	105.5	0	0.0	< 5	@
76036	< 5	@	93	416.1	0	0.0	< 5	@
76039	< 5	@	113	343.2	6	18.2	< 5	@
76040	< 5	@	109	396.0	< 5	@	< 5	@
76051	7	15.1	106	228.8	< 5	@	< 5	@
76052	0	0.0	19	118.8	0	0.0	0	0.0
76053	< 5	@	117	411.7	3	10.6	< 5	@
76054	< 5	@	26	221.0	< 5	@	0	0.0
76060	0	0.0	22	325.3	0	0.0	0	0.0
76063	< 5	@	181	295.0	< 5	@	< 5	@
76092	< 5	@	26	97.5	0	0.0	< 5	@
76102	< 5	@	99	1,221	8	98.6	0	0.0
76103	< 5	@	86	590.2	< 5	@	< 5	@
76104	8	45.9	240	1,376	16	91.7	< 5	@

Rate per 100,000 population

Less than five cases not reported to protect confidentiality; @ = rate not calculated for less than five cases

Rates based on less than 20 cases are considered unstable and should be interpreted with caution.

Data source: Tarrant County Public Health

Table 9b. Selected communicable diseases by ZIP code, Tarrant County, 2013

ZIP Code	Campylobacteriosis		Chlamydia		Early Syphilis		Group B Streptococcus	
	Cases	Rate	Cases	Rate	Cases	Rate	Cases	Rate
76105	< 5	@	236	1,063.4	10	45.1	0	0.0
76106	6	17.0	258	729.0	5	14.1	< 5	@
76107	6	23.2	125	482.3	6	23.2	< 5	@
76108	< 5	@	118	308.7	< 5	@	< 5	@
76109	< 5	@	78	359.3	< 5	@	< 5	@
76110	7	23.0	174	571.7	5	16.4	< 5	@
76111	5	23.1	123	567.2	5	23.1	0	0.0
76112	8	20.5	361	925.8	16	41.0	< 5	@
76114	< 5	@	110	444.6	< 5	@	< 5	@
76115	< 5	@	135	652.3	< 5	@	< 5	@
76116	5	10.7	247	528.4	12	25.7	< 5	@
76117	< 5	@	155	505.8	< 5	@	< 5	@
76118	0	0.0	48	346.2	< 5	@	< 5	@
76119	8	18.7	433	1,012.6	8	18.7	< 5	@
76120	< 5	@	144	942.2	6	39.3	0	0.0
76123	< 5	@	159	534.1	< 5	@	< 5	@
76126	< 5	@	29	149.5	0	0.0	0	0.0
76127	0	0.0	24	1,198.2	0	0.0	0	0.0
76131	< 5	@	89	313.7	< 5	@	0	0.0
76132	< 5	@	164	663.7	5	20.2	< 5	@
76133	9	18.6	274	566.2	10	20.7	< 5	@
76134	< 5	@	182	767.8	< 5	@	< 5	@
76135	0	0.0	100	483.5	< 5	@	0	0.0
76137	< 5	@	205	373.3	8	14.6	< 5	@
76140	< 5	@	216	820.0	8	30.4	0	0.0
76148	< 5	@	71	304.3	< 5	@	< 5	@
76155	0	0.0	16	513.6	< 5	@	< 5	@
76164	< 5	@	94	561.3	< 5	@	< 5	@
76177	< 5	@	21	429.4	0	0.0	0	0.0
76179	< 5	@	165	343.3	< 5	@	0	0.0
76180	< 5	@	110	328.9	< 5	@	< 5	@
76182	< 5	@	< 5	@	0	0.0	0	0.0
76244	5	8.3	99	163.9	0	0.0	< 5	@
76248	5	14.4	55	158.7	< 5	@	0	0.0
76262	< 5	@	6	21.7	< 5	@	< 5	@

Rate per 100,000 population

Less than five cases not reported to protect confidentiality; @ = rate not calculated for less than five cases

Rates based on less than 20 cases are considered unstable and should be interpreted with caution.

Data source: Tarrant County Public Health

Table 9c. Selected communicable diseases by ZIP code, Tarrant County, 2013

ZIP Code	Gonorrhea		HIV		Pertussis		Salmonellosis	
	Cases	Rate	Cases	Rate	Cases	Rate	Cases	Rate
75050	11	26.8	< 5	@	< 5	@	0	0.0
75051	< 5	@	0	0.0	0	0.0	< 5	@
75052	14	15.7	< 5	@	< 5	@	< 5	@
75054	< 5	@	0	0.0	< 5	@	0	0.0
76001	32	105.1	< 5	@	5	16.4	9	29.5
76002	30	99.1	< 5	@	16	52.9	< 5	@
76006	37	163.4	11	48.6	< 5	@	5	22.1
76008	0	0.0	0	0.0	< 5	@	< 5	@
76010	82	147.2	5	9.0	18	32.3	6	10.8
76011	50	231.5	6	27.8	5	23.2	< 5	@
76012	18	70.1	6	23.4	8	31.1	< 5	@
76013	26	84.7	6	19.6	5	16.3	5	16.3
76014	46	135.0	6	17.6	12	35.2	5	14.7
76015	29	174.1	< 5	@	< 5	@	< 5	@
76016	10	32.4	< 5	@	8	25.9	< 5	@
76017	47	105.1	6	13.4	16	35.8	8	17.9
76018	29	107.7	< 5	@	5	18.6	< 5	@
76020	< 5	@	0	0.0	< 5	@	5	22.5
76021	29	86.1	< 5	@	10	29.7	6	17.8
76022	13	98.4	0	0.0	< 5	@	< 5	@
76028	6	10.0	< 5	@	7	11.7	< 5	@
76034	< 5	@	0	0.0	5	22.0	8	35.2
76036	22	98.4	< 5	@	6	26.8	5	22.4
76039	16	48.6	< 5	@	5	15.2	< 5	@
76040	31	112.6	< 5	@	< 5	@	13	47.2
76051	11	23.7	< 5	@	< 5	@	7	15.1
76052	< 5	@	0	0.0	< 5	@	< 5	@
76053	22	77.4	< 5	@	9	31.7	9	31.7
76054	5	42.5	< 5	@	< 5	@	< 5	@
76060	10	147.8	0	0.0	< 5	@	< 5	@
76063	41	66.8	< 5	@	15	24.4	13	21.2
76092	< 5	@	0	0.0	6	22.5	6	22.5
76102	46	567.1	5	61.6	< 5	@	< 5	@
76103	29	199.0	< 5	@	7	48.0	0	0.0
76104	79	452.8	9	51.6	15	86.0	5	28.7

Rate per 100,000 population

Less than five cases not reported to protect confidentiality; @ = rate not calculated for less than five cases

Rates based on less than 20 cases are considered unstable and should be interpreted with caution.

Data source: Tarrant County Public Health

Table 9d. Selected communicable diseases by ZIP code, Tarrant County, 2013

ZIP Code	Gonorrhea		HIV		Pertussis		Salmonellosis	
	Cases	Rate	Cases	Rate	Cases	Rate	Cases	Rate
76105	76	342.4	< 5	@	27	121.7	9	40.6
76106	41	115.9	< 5	@	36	101.7	11	31.1
76107	42	162.1	< 5	@	16	61.7	< 5	@
76108	22	57.6	< 5	@	14	36.6	< 5	@
76109	10	46.1	< 5	@	8	36.8	< 5	@
76110	39	128.1	0	0.0	33	108.4	5	16.4
76111	30	138.3	< 5	@	10	46.1	< 5	@
76112	139	356.5	7	18.0	23	59.0	5	12.8
76114	< 5	@	< 5	@	14	56.6	< 5	@
76115	30	145.0	< 5	@	13	62.8	6	29.0
76116	32	68.5	10	21.4	30	64.2	< 5	@
76117	69	225.2	< 5	@	9	29.4	7	22.8
76118	25	180.3	< 5	@	5	36.1	5	36.1
76119	11	25.7	9	21.0	30	70.2	< 5	@
76120	146	955.3	5	32.7	6	39.3	< 5	@
76123	59	198.2	< 5	@	11	36.9	< 5	@
76126	11	56.7	0	0.0	8	41.2	8	41.2
76127	< 5	@	< 5	@	0	0.0	0	0.0
76131	15	52.9	< 5	@	13	45.8	7	24.7
76132	41	165.9	< 5	@	10	40.5	8	32.4
76133	71	146.7	< 5	@	28	57.9	6	12.4
76134	60	253.1	< 5	@	11	46.4	< 5	@
76135	22	106.4	< 5	@	11	53.2	6	29.0
76137	39	71.0	< 5	@	23	41.9	12	21.9
76140	77	292.3	< 5	@	11	41.8	< 5	@
76148	9	38.6	< 5	@	< 5	@	6	25.7
76155	9	288.9	< 5	@	< 5	@	0	0.0
76164	6	35.8	< 5	@	7	41.8	0	0.0
76177	< 5	@	0	0.0	5	102.2	0	0.0
76179	33	68.7	< 5	@	9	18.7	9	18.7
76180	32	95.7	< 5	@	13	38.9	6	17.9
76182	< 5	@	0	0.0	12	42.5	< 5	@
76244	14	23.2	< 5	@	17	28.2	18	29.8
76248	7	20.2	< 5	@	11	31.7	7	20.2
76262	< 5	@	0	0.0	< 5	@	< 5	@

Rate per 100,000 population

Less than five cases not reported to protect confidentiality; @ = rate not calculated for less than five cases

Rates based on less than 20 cases are considered unstable and should be interpreted with caution.

Data source: Tarrant County Public Health

Table 9e. Selected communicable diseases by ZIP code, Tarrant County, 2013

ZIP Code	Shigellosis		<i>S. pneumoniae</i> , inv.		Tuberculosis		Varicella	
	Cases	Rate	Cases	Rate	Cases	Rate	Cases	Rate
75050	< 5	@	0	0.0	< 5	@	< 5	@
75051	0	0.0	< 5	@	0	0.0	0	0.0
75052	< 5	@	< 5	@	< 5	@	0	0.0
75054	< 5	@	0	0.0	0	0.0	< 5	@
76001	0	0.0	< 5	@	< 5	@	< 5	@
76002	< 5	@	0	0.0	0	0.0	< 5	@
76006	< 5	@	0	0.0	0	0.0	0	0.0
76008	0	0.0	0	0.0	0	0.0	0	0.0
76010	8	14.4	< 5	@	< 5	@	7	12.6
76011	8	37.0	< 5	@	0	0.0	< 5	@
76012	0	0.0	< 5	@	< 5	@	< 5	@
76013	< 5	@	< 5	@	0	0.0	< 5	@
76014	< 5	@	< 5	@	< 5	@	< 5	@
76015	< 5	@	< 5	@	0	0.0	< 5	@
76016	0	0.0	0	0.0	0	0.0	5	16.2
76017	< 5	@	< 5	@	< 5	@	5	11.2
76018	< 5	@	0	0.0	< 5	@	< 5	@
76020	0	0.0	< 5	@	0	0.0	< 5	@
76021	0	0.0	8	23.8	0	0.0	0	0.0
76022	< 5	@	< 5	@	0	0.0	0	0.0
76028	< 5	@	< 5	@	0	0.0	0	0.0
76034	< 5	@	< 5	@	0	0.0	0	0.0
76036	< 5	@	< 5	@	0	0.0	< 5	@
76039	< 5	@	0	0.0	< 5	@	< 5	@
76040	< 5	@	< 5	@	< 5	@	< 5	@
76051	< 5	@	< 5	@	0	0.0	< 5	@
76052	0	0.0	< 5	@	0	0.0	< 5	@
76053	< 5	@	7	24.6	0	0.0	< 5	@
76054	0	0.0	0	0.0	0	0.0	0	0.0
76060	0	0.0	< 5	@	< 5	@	< 5	@
76063	< 5	@	< 5	@	5	8.1	8	13.0
76092	< 5	@	0	0.0	0	0.0	5	18.7
76102	5	61.6	< 5	@	< 5	@	< 5	@
76103	0	0.0	< 5	@	< 5	@	< 5	@
76104	< 5	@	< 5	@	< 5	@	< 5	@

Rate per 100,000 population

Less than five cases not reported to protect confidentiality; @ = rate not calculated for less than five cases

Rates based on less than 20 cases are considered unstable and should be interpreted with caution.

Data source: Tarrant County Public Health

Table 9f. Selected communicable diseases by ZIP code, Tarrant County, 2013

ZIP Code	Shigellosis		<i>S. pneumoniae</i> , inv.		Tuberculosis		Varicella	
	Cases	Rate	Cases	Rate	Cases	Rate	Cases	Rate
76105	7	31.5	6	27.0	< 5	@	0	0.0
76106	5	14.1	8	22.6	< 5	@	< 5	@
76107	< 5	@	< 5	@	< 5	@	< 5	@
76108	< 5	@	< 5	@	0	0.0	< 5	@
76109	< 5	@	< 5	@	0	0.0	0	0.0
76110	< 5	@	< 5	@	< 5	@	< 5	@
76111	5	23.1	0	0.0	< 5	@	< 5	@
76112	< 5	@	6	15.4	< 5	@	0	0.0
76114	< 5	@	< 5	@	0	0.0	< 5	@
76115	7	33.8	< 5	@	< 5	@	0	0.0
76116	< 5	@	7	15.0	0	0.0	< 5	@
76117	7	22.8	5	16.3	< 5	@	< 5	@
76118	0	0.0	< 5	@	0	0.0	< 5	@
76119	< 5	@	9	21.0	6	14.0	6	14.0
76120	5	32.7	< 5	@	0	0.0	< 5	@
76123	< 5	@	< 5	@	0	0.0	< 5	@
76126	0	0.0	5	25.8	< 5	@	0	0.0
76127	0	0.0	0	0.0	0	0.0	0	0.0
76131	< 5	@	< 5	@	0	0.0	7	24.7
76132	< 5	@	< 5	@	< 5	@	< 5	@
76133	< 5	@	< 5	@	< 5	@	3	6.2
76134	0	0.0	< 5	@	< 5	@	< 5	@
76135	< 5	@	< 5	@	< 5	@	< 5	@
76137	< 5	@	< 5	@	< 5	@	12	21.9
76140	< 5	@	< 5	@	0	0.0	< 5	@
76148	5	21.4	< 5	@	0	0.0	< 5	@
76155	0	0.0	0	0.0	< 5	@	< 5	@
76164	< 5	@	< 5	@	< 5	@	< 5	@
76177	0	0.0	0	0.0	< 5	@	< 5	@
76179	< 5	@	< 5	@	< 5	@	< 5	@
76180	0	0.0	< 5	@	< 5	@	< 5	@
76182	0	0.0	0	0.0	0	0.0	< 5	@
76244	< 5	@	< 5	@	< 5	@	8	13.2
76248	< 5	@	0	0.0	0	0.0	5	14.4
76262	0	0.0	0	0.0	0	0.0	0	0.0

Rate per 100,000 population

Less than five cases not reported to protect confidentiality; @ = rate not calculated for less than five cases

Rates based on less than 20 cases are considered unstable and should be interpreted with caution.

Data source: Tarrant County Public Health

Disease Specific Information and Definitions

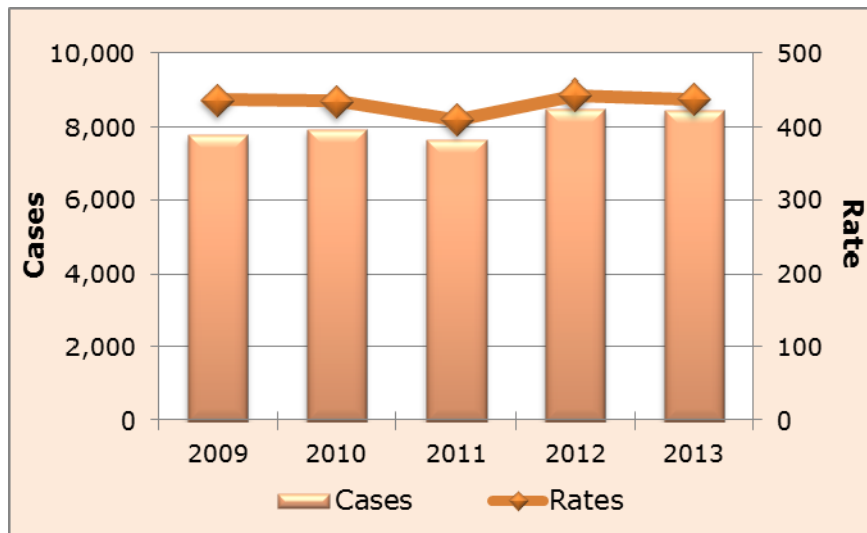
The remainder of this report focuses on disease specific information and demographic details for the 10 leading communicable diseases overall for Tarrant County in 2013. Information pertaining to causative agent, signs and symptoms, modes of transmission, incubation period and period of communicability was obtained from *Control of Communicable Diseases Manual*, 19th Edition (2008), as well as the Centers for Disease Control and Prevention (www.cdc.gov). Definitions and use for the formerly stated terms are as follows:

- **Causative Agent:** bacteria, virus, parasite, fungus or prion which can cause disease state
- **Signs/Symptoms:** physical manifestations which may result from infection with a causative agent
- **Mode(s) of Transmission:** mechanisms by which the causative agent spreads among human populations
- **Incubation Period:** time interval from infection with a causative agent until the demonstration of signs or symptoms
- **Period of Communicability:** time period during which a causative agent may be transmitted directly or indirectly from a person to another person

1. Chlamydia

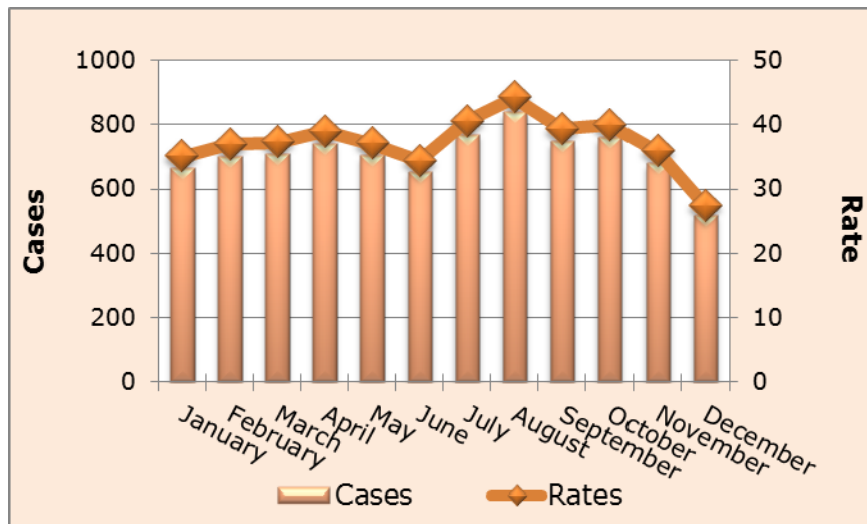
- **Causative Agent:** (bacterial) *Chlamydia trachomatis*
- **Signs/Symptoms:** Men - discharge, urethral itching, burning urination; 1-25% of infected men do not exhibit symptoms. Women - discharge with swelling; up to 70% of infected women do not exhibit symptoms. Infants born to infected women may develop eye or pneumonic infections. Complications for both men and women include infertility and for women, increased risk of HIV infection.
- **Mode(s) of Transmission:** Perinatally or sexually transmitted infection
- **Incubation Period:** 7-14 days or longer
- **Period of Communicability:** Infected individuals are assumed to be infectious.

Figure 1. Chlamydia, Tarrant County, 2009-2013



Rate per 100,000 population
 Data Source: Tarrant County Public Health

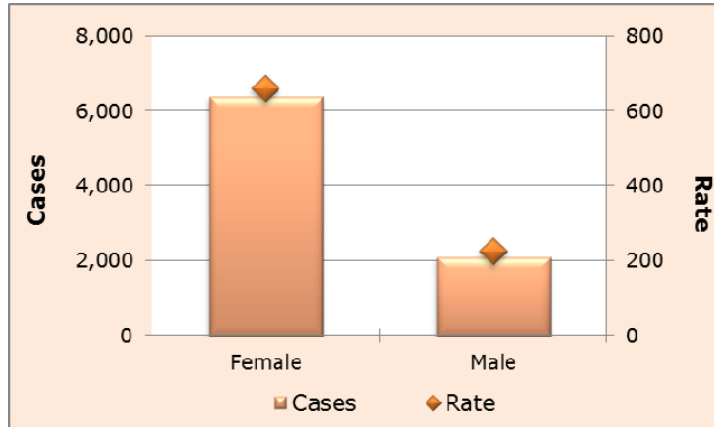
Figure 2. Chlamydia by month, Tarrant County, 2013



Rate per 100,000 population

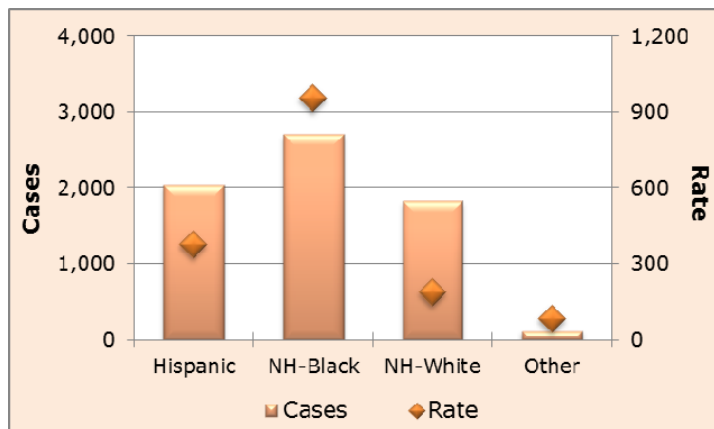
Data Source: Tarrant County Public Health

Figure 3. Chlamydia by gender, Tarrant County, 2013



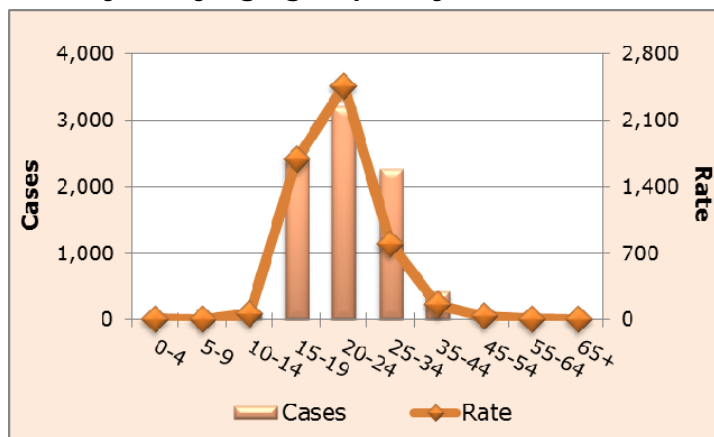
Rate per 100,000 population
Data Source: Tarrant County Public Health

Figure 4. Chlamydia by race/ethnicity, Tarrant County, 2013



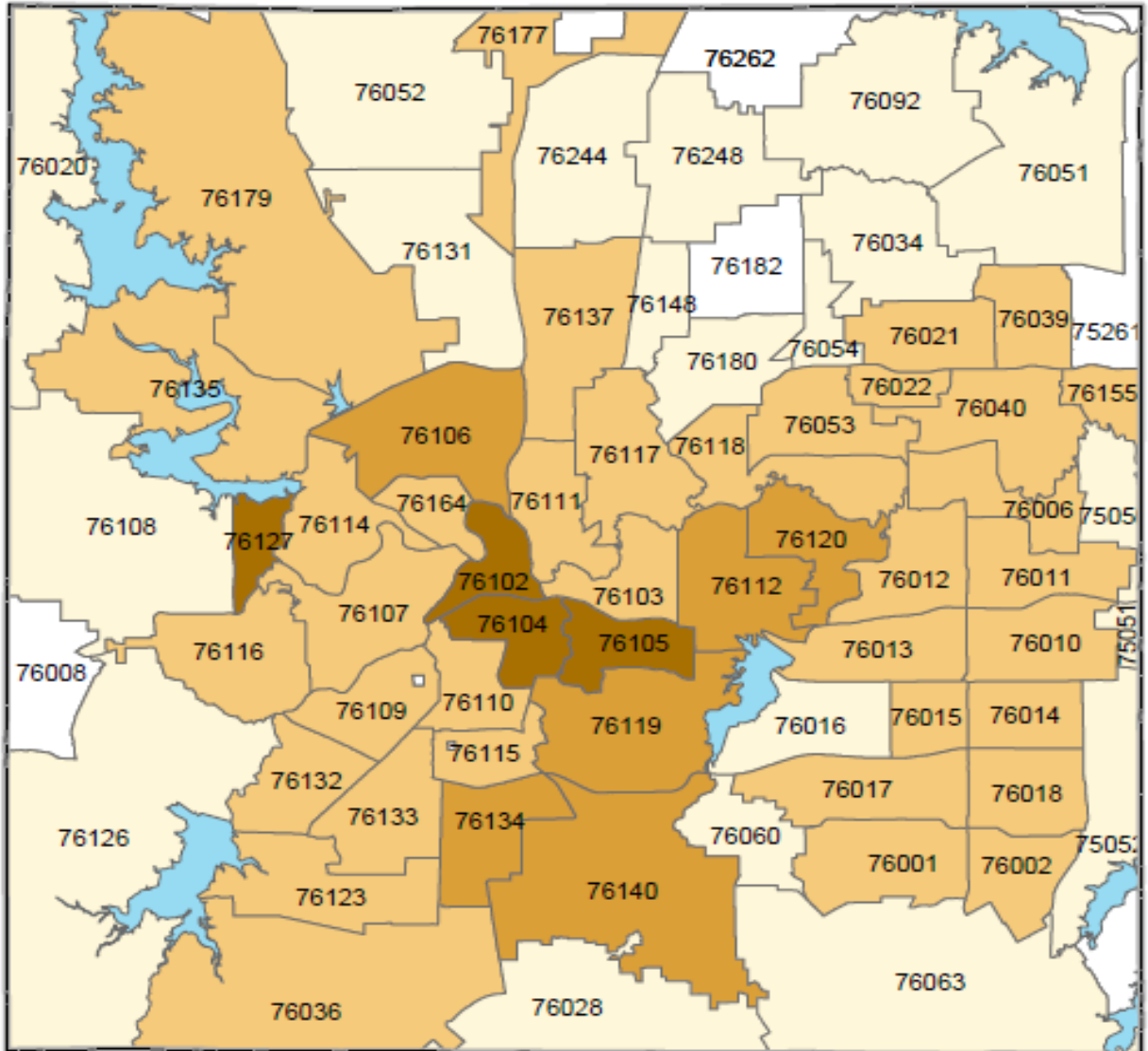
Rate per 100,000 population NH = Non-Hispanic
Data Source: Tarrant County Public Health

Figure 5. Chlamydia by age group (in years), Tarrant County, 2013



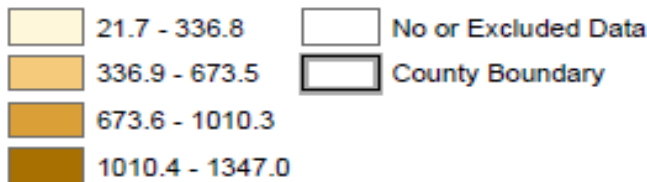
Rate per 100,000 population
Data Source: Tarrant County Public Health

Figure 6. Geographic distribution of chlamydia by ZIP code, Tarrant County, 2013



These data were prepared by Tarrant County Public Health for its use, and may be revised any time, without notification. Tarrant County Public Health does not guarantee the correctness or accuracy of any features on this map. Tarrant County assumes no responsibility in connection therewith. Said data should not be edited by anyone other than designated personnel, or through written approval by GIS Manager. These data are for informational purposes only and should not create liability on the part of Tarrant County Government, any officer and/or employees thereof.

Rate per 100,000



2. Gonorrhea

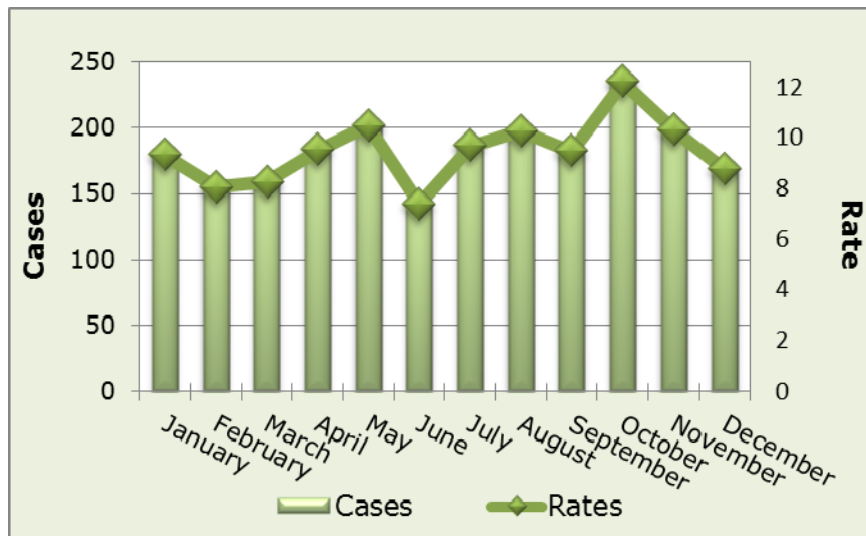
- **Causative Agent:** (bacterial) *Neisseria gonorrhoeae*
- **Signs/Symptoms:** Men - discharge, urethral itching, burning urination; very few of infected men do not exhibit symptoms. Women - discharge and vaginal bleeding after intercourse; most women do not exhibit symptoms. Infants born to infected women may develop eye infections.
- **Mode(s) of Transmission:** Perinatally or sexually transmitted infection
- **Incubation Period:** 1-14 days or longer
- **Period of Communicability:** Infected individuals are assumed to be infectious.

Figure 7. Gonorrhea, Tarrant County, 2009-2013



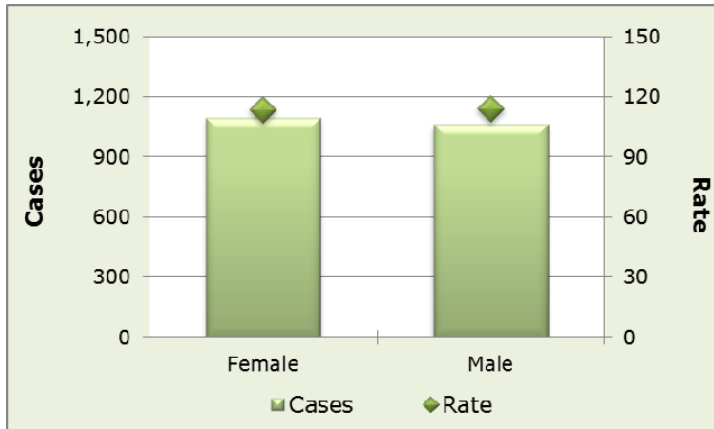
Rate per 100,000 population
Data source: Tarrant County Public Health

Figure 8. Gonorrhea by month, Tarrant County, 2013



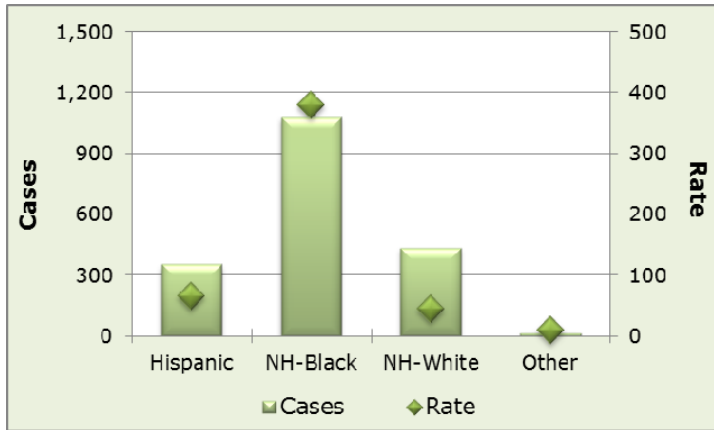
Rate per 100,000 population
Data Source: Tarrant County Public Health

Figure 9. Gonorrhea by gender, Tarrant County, 2013



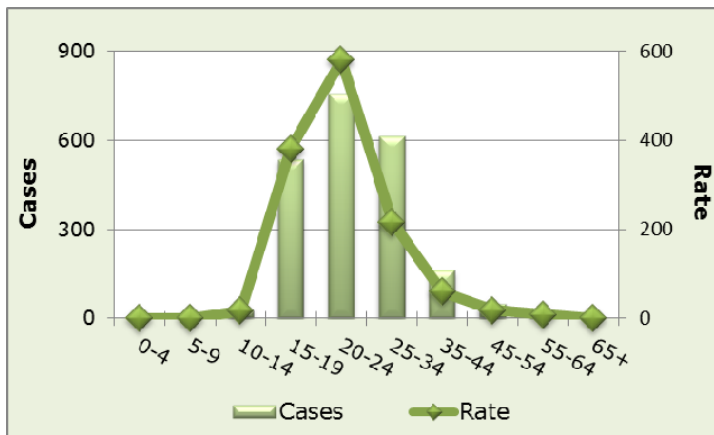
Rate per 100,000 population
Data source: Tarrant County Public Health

Figure 10. Gonorrhea by race/ethnicity, Tarrant County, 2013



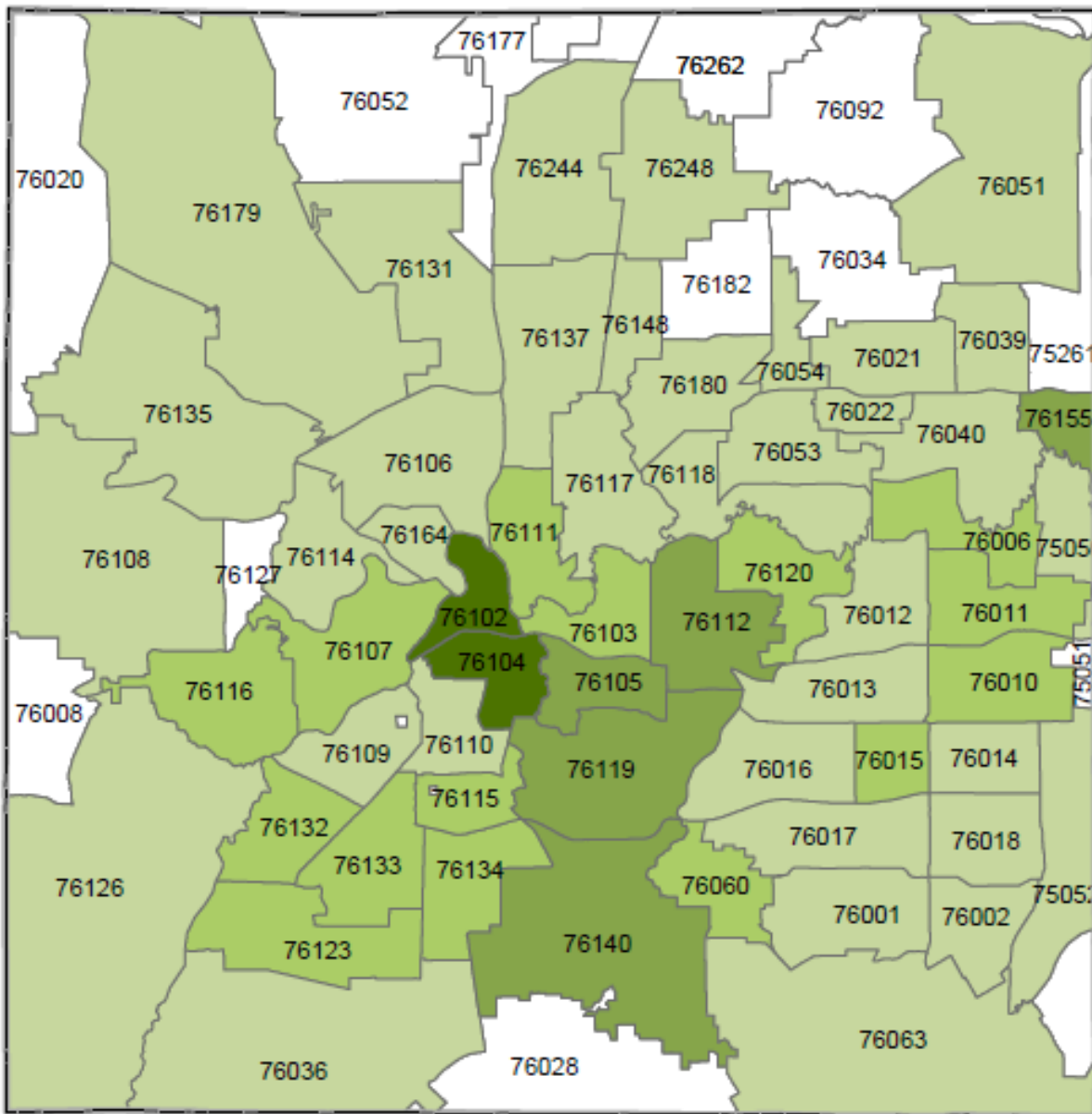
Rate per 100,000 population NH = Non-Hispanic
Data source: Tarrant County Public Health

Figure 11. Gonorrhea by age group (in years), Tarrant County, 2013



Rate per 100,000 population
Data source: Tarrant County Public Health

Figure 12. Geographic distribution of gonorrhea by ZIP Code, Tarrant County, 2013



These data were prepared by Tarrant County Public Health for its use, and may be revised any time, without notification. Tarrant County Public Health does not guarantee the correctness or accuracy of any features on this map. Tarrant County assumes no responsibility in connection therewith. Said data should not be edited by anyone other than designated personnel, or through written approval by GIS Manager. These data are for informational purposes only and should not create liability on the part of Tarrant County Government, any officer and/or employees thereof.

Rate per 100,000

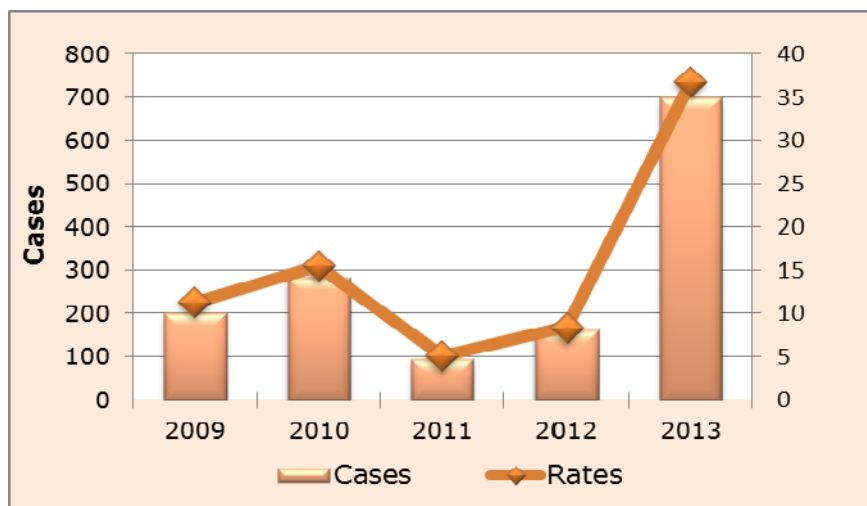
- 10.0 - 132.5
- 132.6 - 265.1
- 265.2 - 397.6
- 397.7 - 530.1
- No or Excluded Data
- County Boundary



3. Pertussis (Whooping Cough)

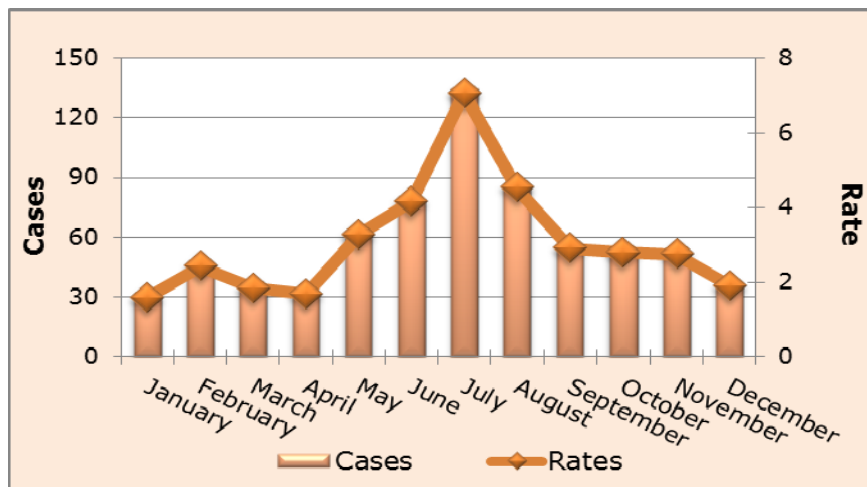
- **Causative Agent:** (bacterial) *Bordetella pertussis*
- **Signs/Symptoms:** Early symptoms are cold-like and include runny nose, low-grade fever, with an occasional mild cough. After 1 to 2 weeks, severe coughing can begin and continue for weeks. Coughing can be violent and rapid until the air is gone from the lungs and the person is forced to inhale with a loud “whooping” sound.
- **Mode(s) of Transmission:** Direct contact with discharges from respiratory mucous membranes of infected persons by the airborne route, usually via droplets.
- **Incubation Period:** 6-20 days, average 9-10 days
- **Period of Communicability:** Highly communicable during the early phase of illness (first 2 weeks); Communicability decreases in about 3 weeks, despite persisting cough.

Figure 13. Pertussis, Tarrant County, 2009-2013



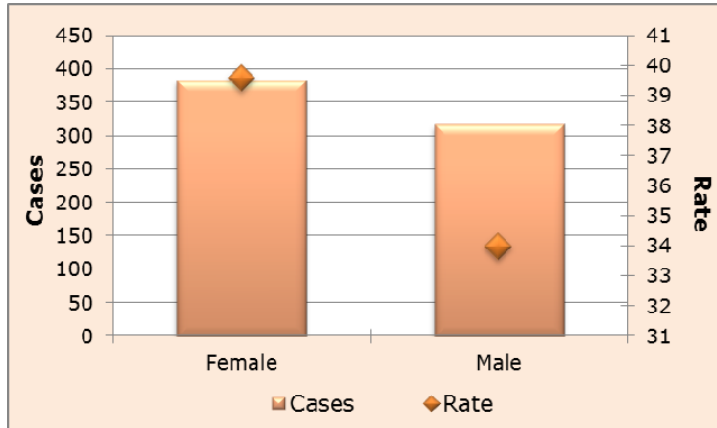
Rate per 100,000 population
Data source: Tarrant County Public Health

Figure 14. Pertussis by month, Tarrant County, 2013



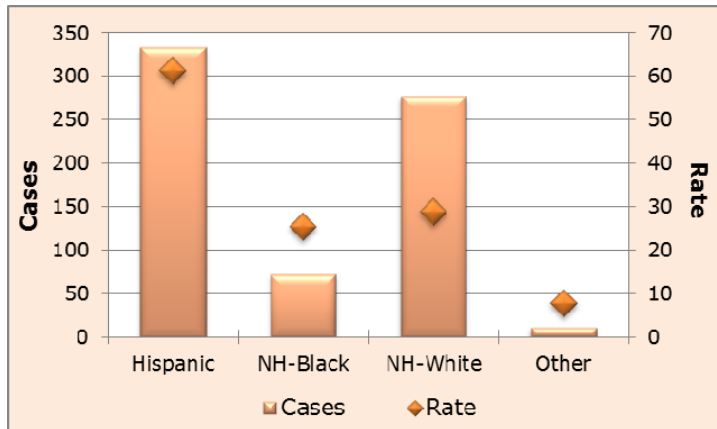
Rate per 100,000 population
Data Source: Tarrant County Public Health

Figure 15. Pertussis by gender, Tarrant County, 2013



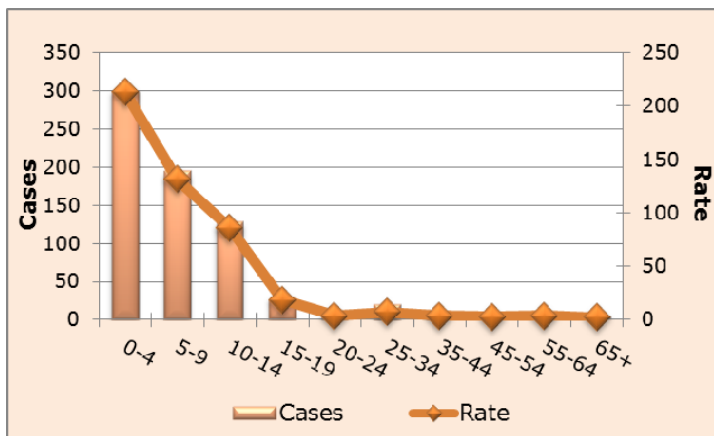
Rate per 100,000 population
Data source: Tarrant County Public Health

Figure 16. Pertussis by race/ethnicity, Tarrant County, 2013



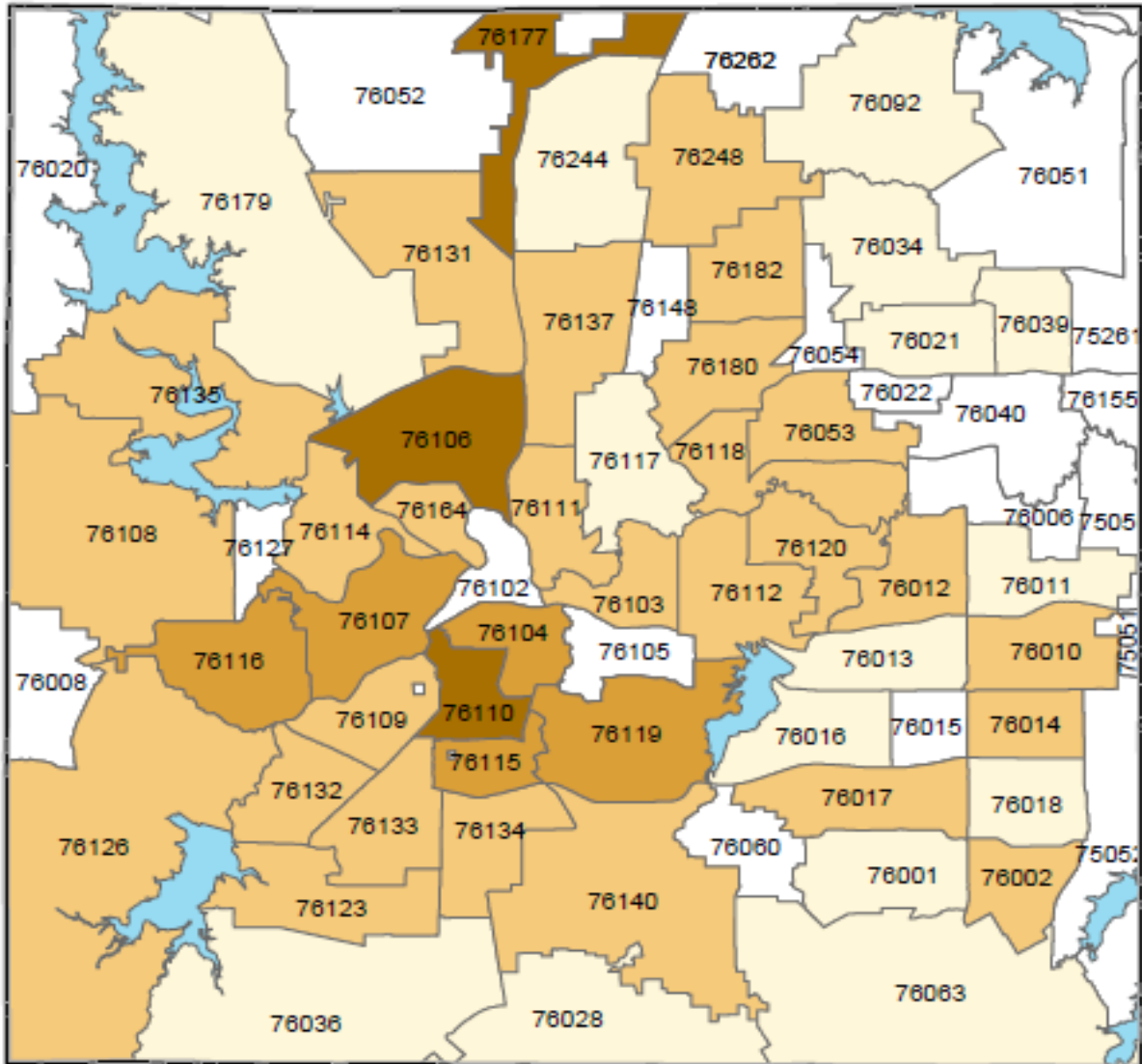
Rate per 100,000 population
NH = Non-Hispanic
Data Source: Tarrant County Public Health

Figure 17. Pertussis by age group (in years), Tarrant County, 2013



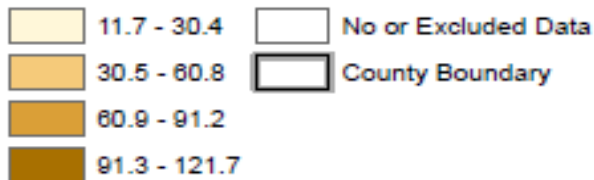
Rate per 100,000 population
Data source: Tarrant County Public Health

Figure 18. Geographic distribution of pertussis by ZIP code, Tarrant County, 2013



These data were prepared by Tarrant County Public Health for its use, and may be revised any time, without notification. Tarrant County Public Health does not guarantee the correctness or accuracy of any features on this map. Tarrant County assumes no responsibility in connection therewith. Said data should not be edited by anyone other than designated personnel, or through written approval by GIS Manager. These data are for informational purposes only and should not create liability on the part of Tarrant County Government, any officer and/or employees thereof.

Rate per 100,000



4. Salmonellosis

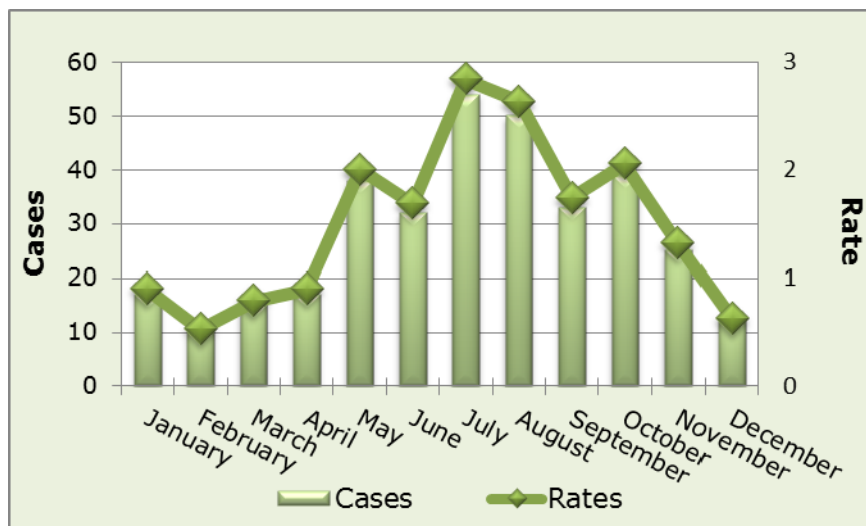
- **Causative Agent:** (bacterial) *Salmonella* species
- **Signs/Symptoms:** Fever, headache, abdominal pain, diarrhea, possibly vomiting. Some people do not present with any symptoms.
- **Mode(s) of Transmission:** Ingestion of the bacteria in food derived from infected animals or contaminated by feces of an infected animal or person.
- **Incubation Period:** 6 hours to 5 days, usually 1-2 days
- **Period of Communicability:** While signs/symptoms are present; those infected may carry and transmit the bacteria for weeks up to a year after becoming infected.

Figure 19. Salmonellosis, Tarrant County, 2009-2013



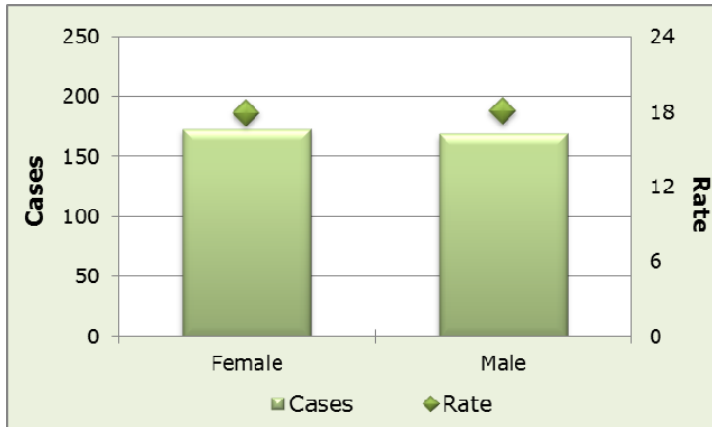
Rate per 100,000 population
Data source: Tarrant County Public Health

Figure 20. Salmonellosis by month, Tarrant County, 2013



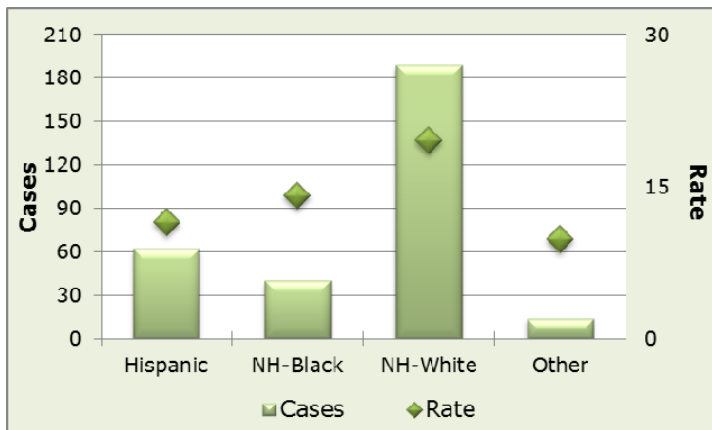
Rate per 100,000 population
Data source: Tarrant County Public Health

Figure 21. Salmonellosis by gender, Tarrant County, 2013



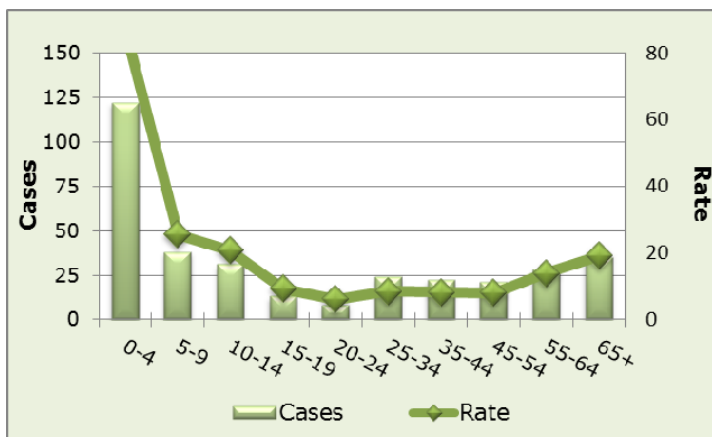
Rate per 100,000 population
Data source: Tarrant County Public Health

Figure 22. Salmonellosis by race/ethnicity, Tarrant County, 2013



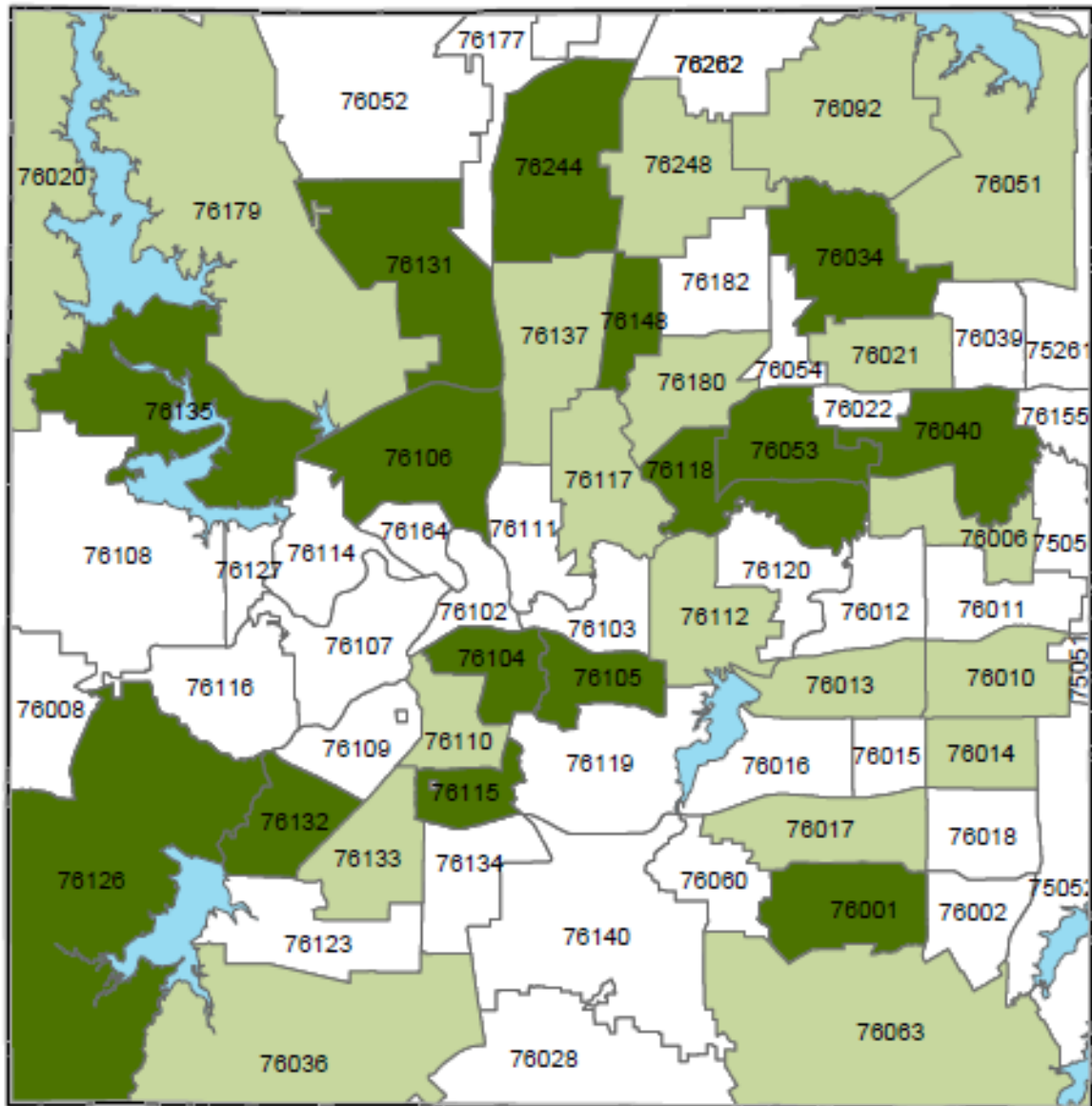
Rate per 100,000 population
NH = Non-Hispanic
Data source: Tarrant County Public Health

Figure 23. Salmonellosis by age group (in years), Tarrant County, 2013



Rate per 100,000 population
Data source: Tarrant County Public Health

Figure 24. Geographic distribution of salmonellosis by ZIP code, Tarrant County, 2013



These data were prepared by Tarrant County Public Health for its use, and may be revised any time, without notification. Tarrant County Public Health does not guarantee the correctness or accuracy of any features on this map. Tarrant County assumes no responsibility in connection therewith. Said data should not be edited by anyone other than designated personnel, or through written approval by GIS Manager. These data are for informational purposes only and should not create liability on the part of Tarrant County Government, any officer and/or employees thereof.



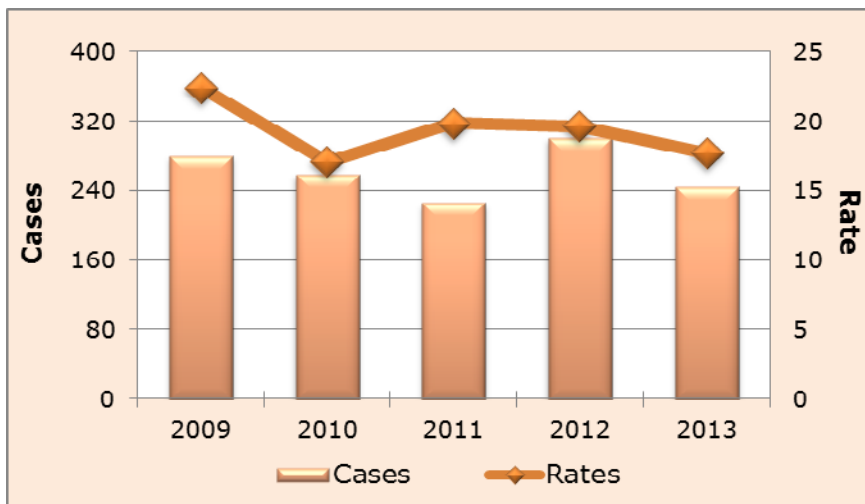
Rate per 100,000

-
- 10.8 - 23.8
-
- No or Excluded Data
-
- 23.7 - 47.2
-
- County Boundary

5. Early Syphilis

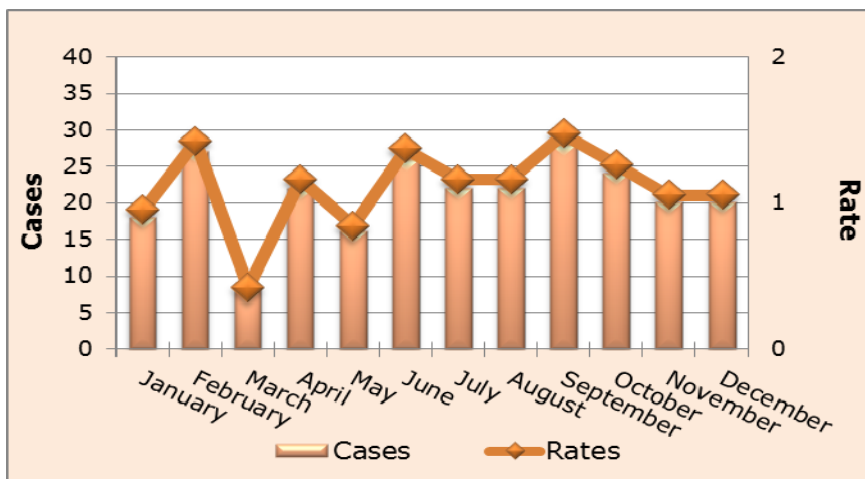
- **Causative Agent:** (bacterial) *Treponema pallidum*
- **Signs/Symptoms:** Primary lesion which may or may not be visible appearing approximately 3 weeks after infection followed by a secondary disease phase lasting 2 weeks to 12 months characterized by a rash on the palms of the hands and soles of the feet. Untreated individuals will proceed to a tertiary phase considered late syphilis which may involve reoccurring lesions, central nervous system disease and meningitis. Infants born to infected women may die due to preterm birth and/ or low birthweight.
- **Mode(s) of Transmission:** Perinatally, sexually or blood transmitted infection
- **Incubation Period:** 10 days to 3 months, usually 3 weeks
- **Period of Communicability:** Period involving lesions, typically within the first year of infection.

Figure 25. Early Syphilis, Tarrant County, 2009-2013



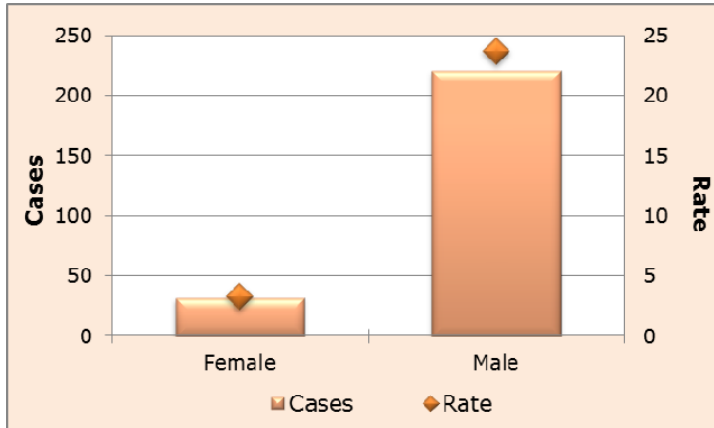
Rate per 100,000 population
Data source: Tarrant County Public Health

Figure 26. Early Syphilis by month, Tarrant County, 2013



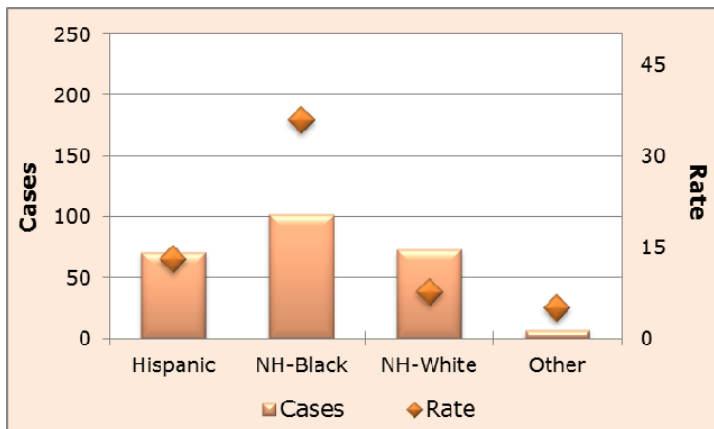
Rate per 100,000 population
Data source: Tarrant County Public Health

Figure 27. Early Syphilis by gender, Tarrant County, 2013



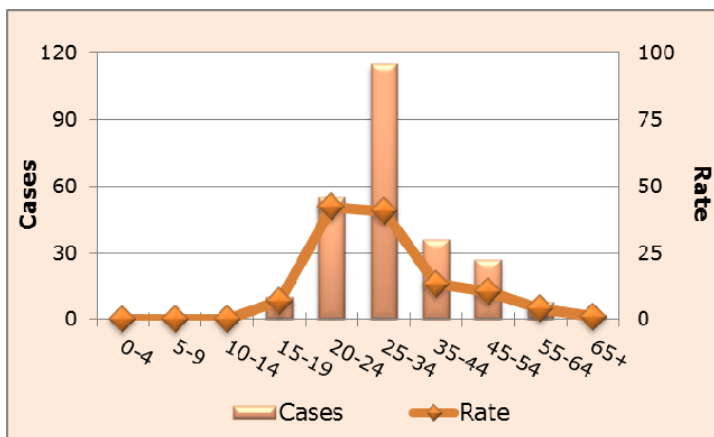
Rate per 100,000 population
Data source: Tarrant County Public Health

Figure 28. Early Syphilis by race/ethnicity, Tarrant County, 2013



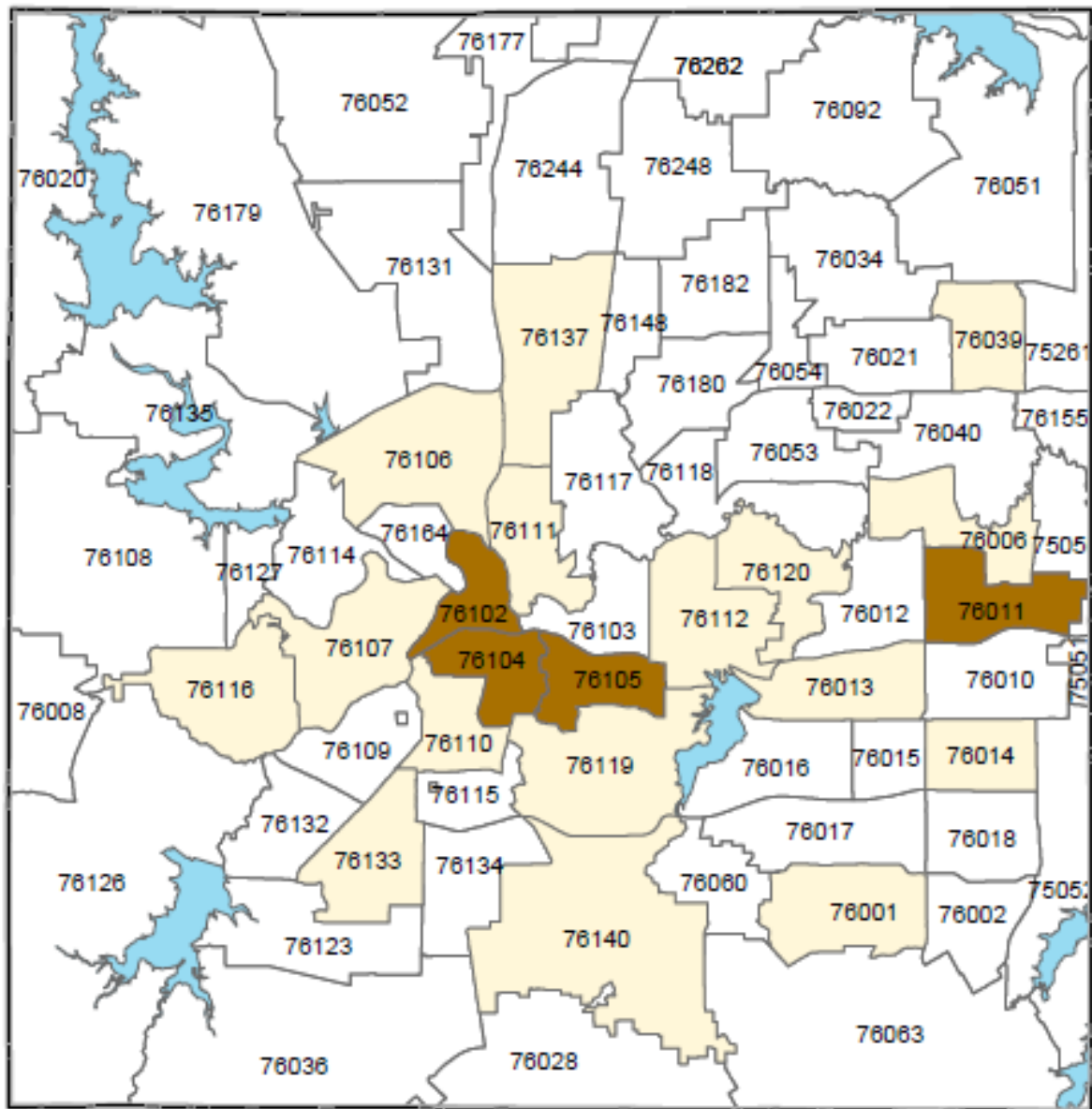
Rate per 100,000 population
NH = Non-Hispanic
Data source: Tarrant County Public Health

Figure 29. Early Syphilis by age group (in years), Tarrant County, 2013



Rate per 100,000 population
Data source: Tarrant County Public Health

Figure 30. Geographic distribution of early syphilis by ZIP code, Tarrant County, 2013



These data were prepared by Tarrant County Public Health for its use, and may be revised any time, without notification. Tarrant County Public Health does not guarantee the correctness or accuracy of any features on this map. Tarrant County assumes no responsibility in connection therewith. Said data should not be edited by anyone other than designated personnel, or through written approval by GIS Manager. These data are for informational purposes only and should not create liability on the part of Tarrant County Government, any officer and/or employees thereof.



Rate per 100,000

- 14.1 - 43.1 No or Excluded Data
- 43.3 - 86.3 County Boundary

6. Campylobacteriosis

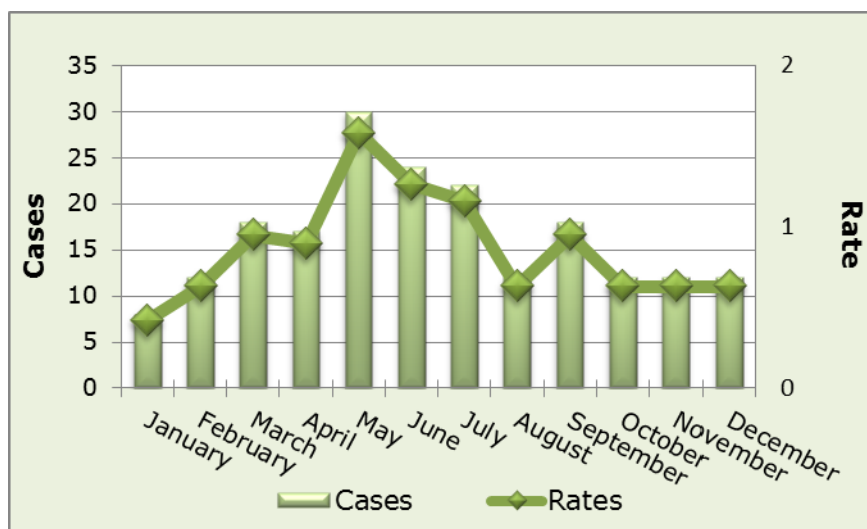
- **Causative Agent:** (bacterial) *Campylobacter* species
- **Signs/Symptoms:** Diarrhea (frequently bloody), fever, abdominal pain, vomiting. Many people do not present with any symptoms.
- **Mode(s) of Transmission:** Ingestion of the bacteria in food derived from infected animals (typically poultry) or food or water contaminated by feces of an infected animal. Contact with infected animals, especially puppies and kittens.
- **Incubation Period:** 1-10 days, usually 2-5 days
- **Period of Communicability:** While signs/symptoms are present; those infected may carry and transmit the bacteria for 2-7 weeks after becoming infected.

Figure 31. Campylobacteriosis, Tarrant County, 2009-2013



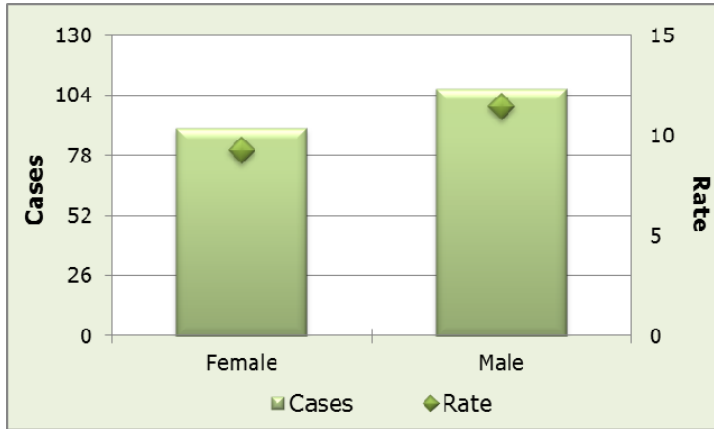
Rate per 100,000 population
Data source: Tarrant County Public Health

Figure 32. Campylobacteriosis by month, Tarrant County, 2013



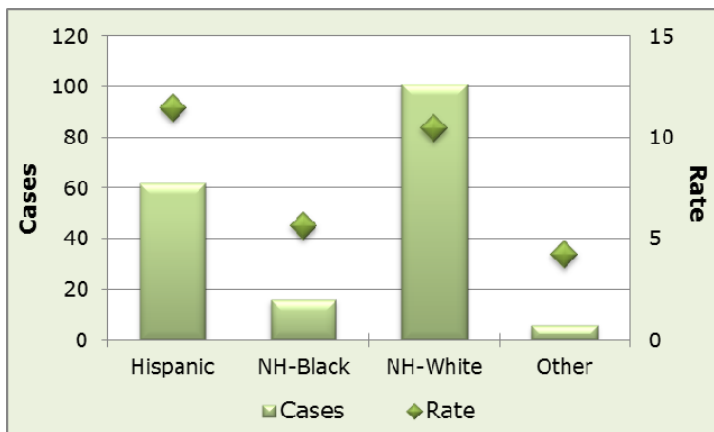
Rate per 100,000 population
Data source: Tarrant County Public Health

Figure 33. Campylobacteriosis by gender, Tarrant County, 2013



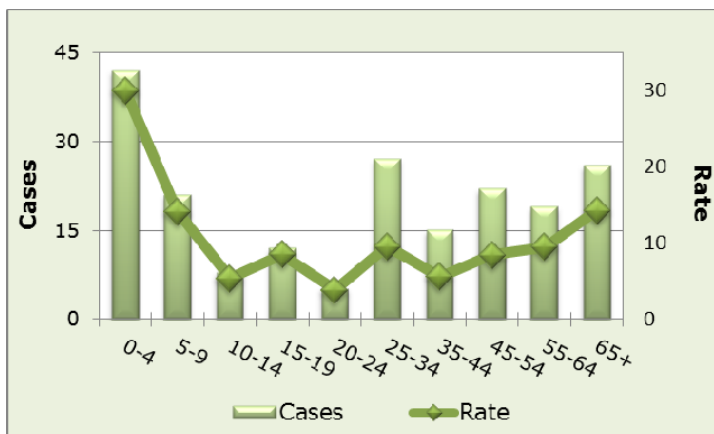
Rate per 100,000 population
Data Source: Tarrant County Public Health

Figure 34. Campylobacteriosis by race/ethnicity, Tarrant County, 2013



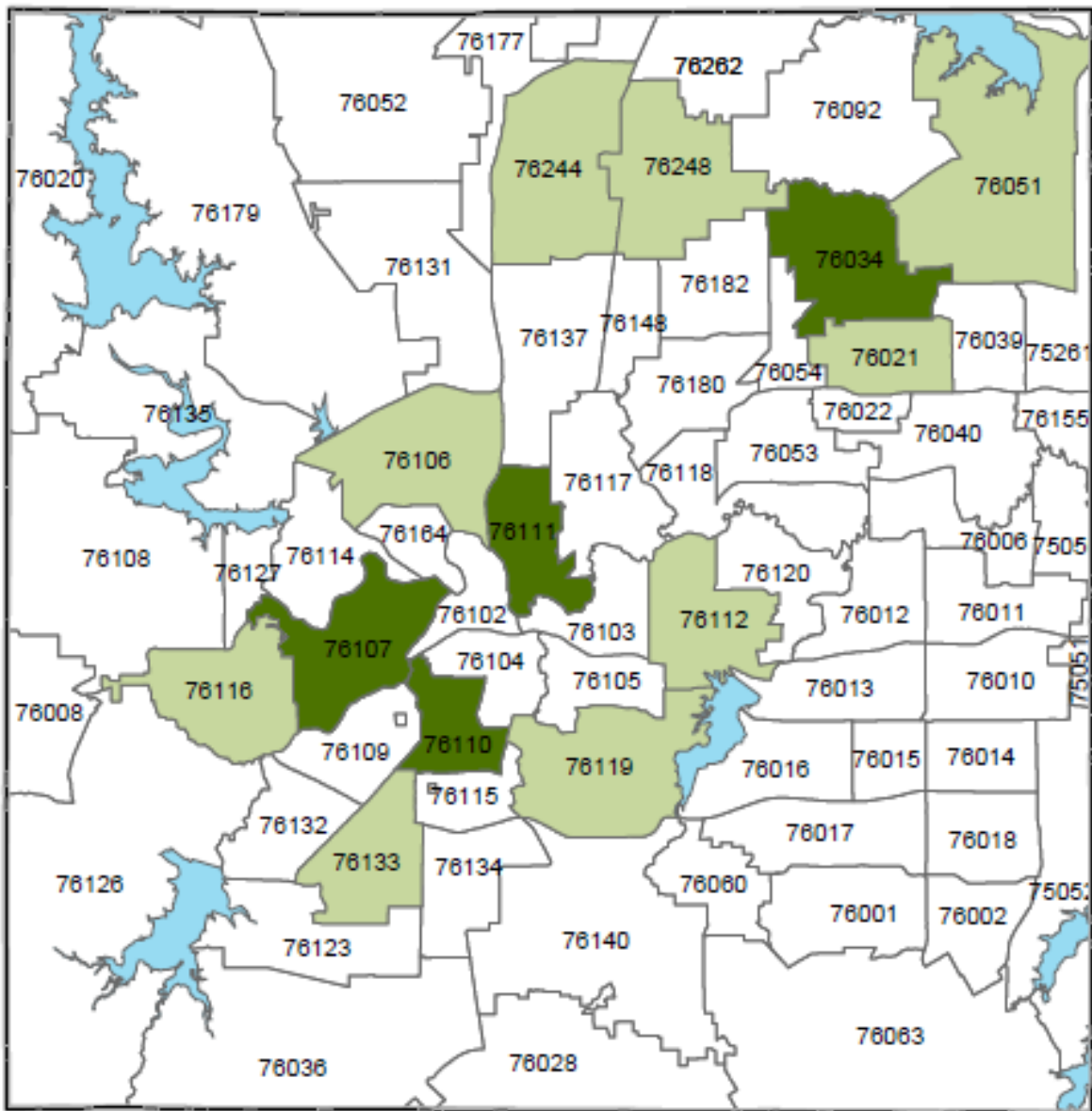
Rate per 100,000 population
NH = Non-Hispanic
Data Source: Tarrant County Public Health

Figure 35. Campylobacteriosis by age group (in years), Tarrant County, 2013



Rate per 100,000 population
Data source: Tarrant County Public Health

Figure 36. Geographic distribution of campylobacteriosis by ZIP code, Tarrant County, 2013



These data were prepared by Tarrant County Public Health for its use, and may be revised any time, without notification. Tarrant County Public Health does not guarantee the correctness or accuracy of any features on this map. Tarrant County assumes no responsibility in connection therewith. Said data should not be edited by anyone other than designated personnel, or through written approval by GIS Manager. These data are for informational purposes only and should not create liability on the part of Tarrant County Government, any officer and/or employees thereof.

Rate per 100,000

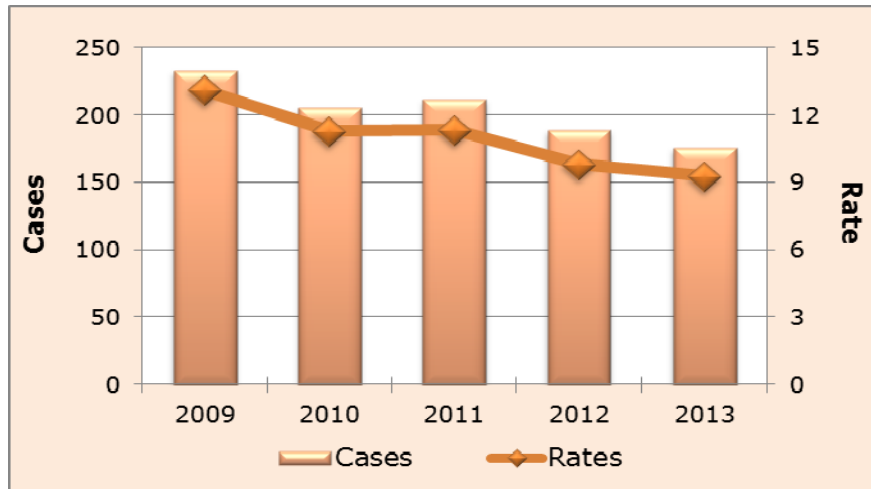
- 8.3 - 22.9
- 23.0 - 45.9
- No or Excluded Data
- County Boundary



7. Human Immunodeficiency Virus

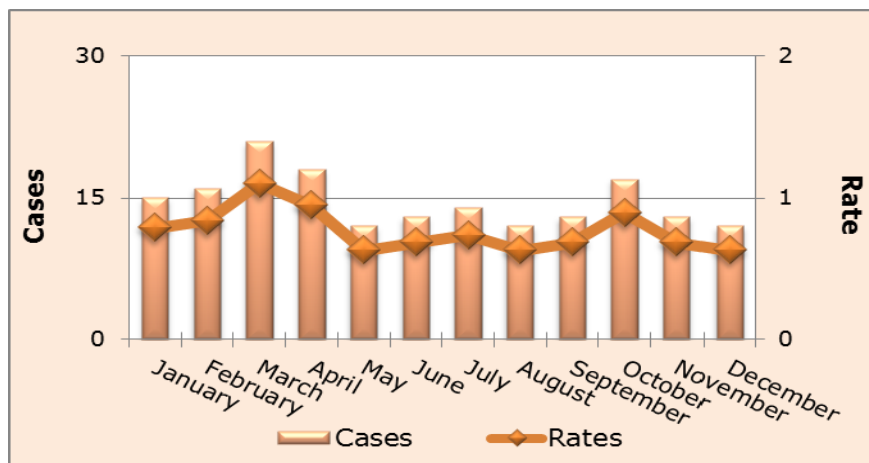
- **Causative Agent:** (viral) Human Immunodeficiency Virus (HIV)
- **Signs/Symptoms:** Several weeks after infection flu-like symptoms of chills, body aches, fatigue and possibly fever lasting 1-2 weeks. Symptoms may not appear again for possibly years and may involve infections and cancers resulting from HIV induced immune deficiencies. HIV infection will result in AIDS in over 90% of individuals.
- **Mode(s) of Transmission:** Perinatally, sexually or blood transmitted infection; breastfeeding may also transmit the infection.
- **Incubation Period:** Variable
- **Period of Communicability:** Begins early after infection; risk of transmission most likely highest within the first few months after infection.

Figure 37. HIV, Tarrant County, 2009-2013



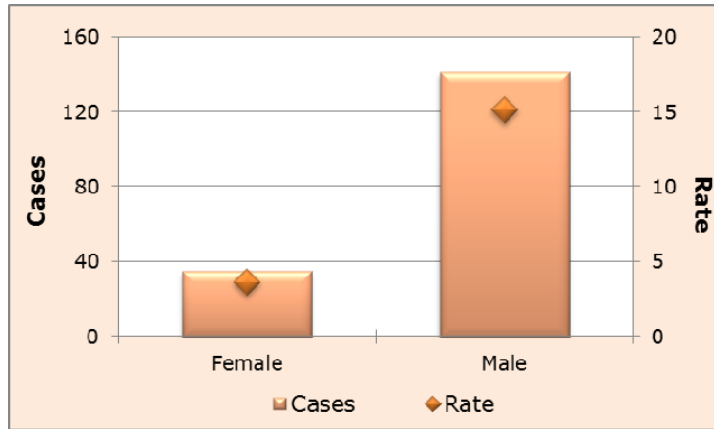
Rate per 100,000 populations
Data source: Tarrant County Public Health

Figure 38. HIV by month, Tarrant County, 2013



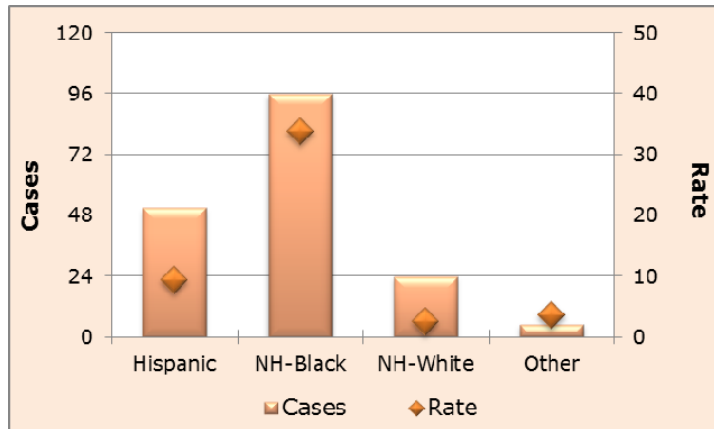
Rate per 100,000 population
Data source: Tarrant County Public Health

Figure 39. HIV by gender, Tarrant County, 2013



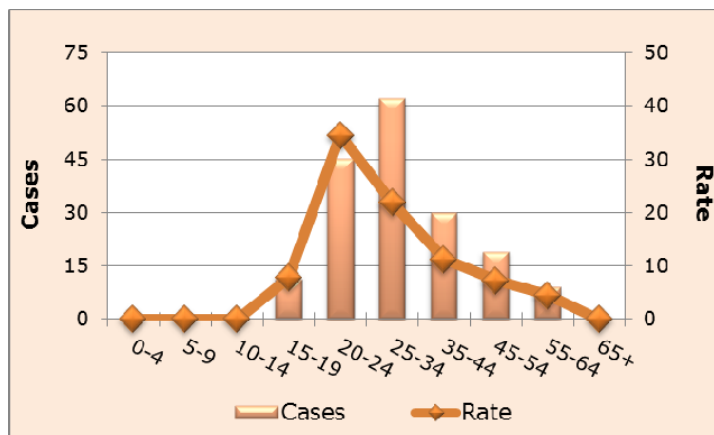
Rate per 100,000 population
Data source: Tarrant County Public Health

Figure 40. HIV by race/ethnicity, Tarrant County, 2013



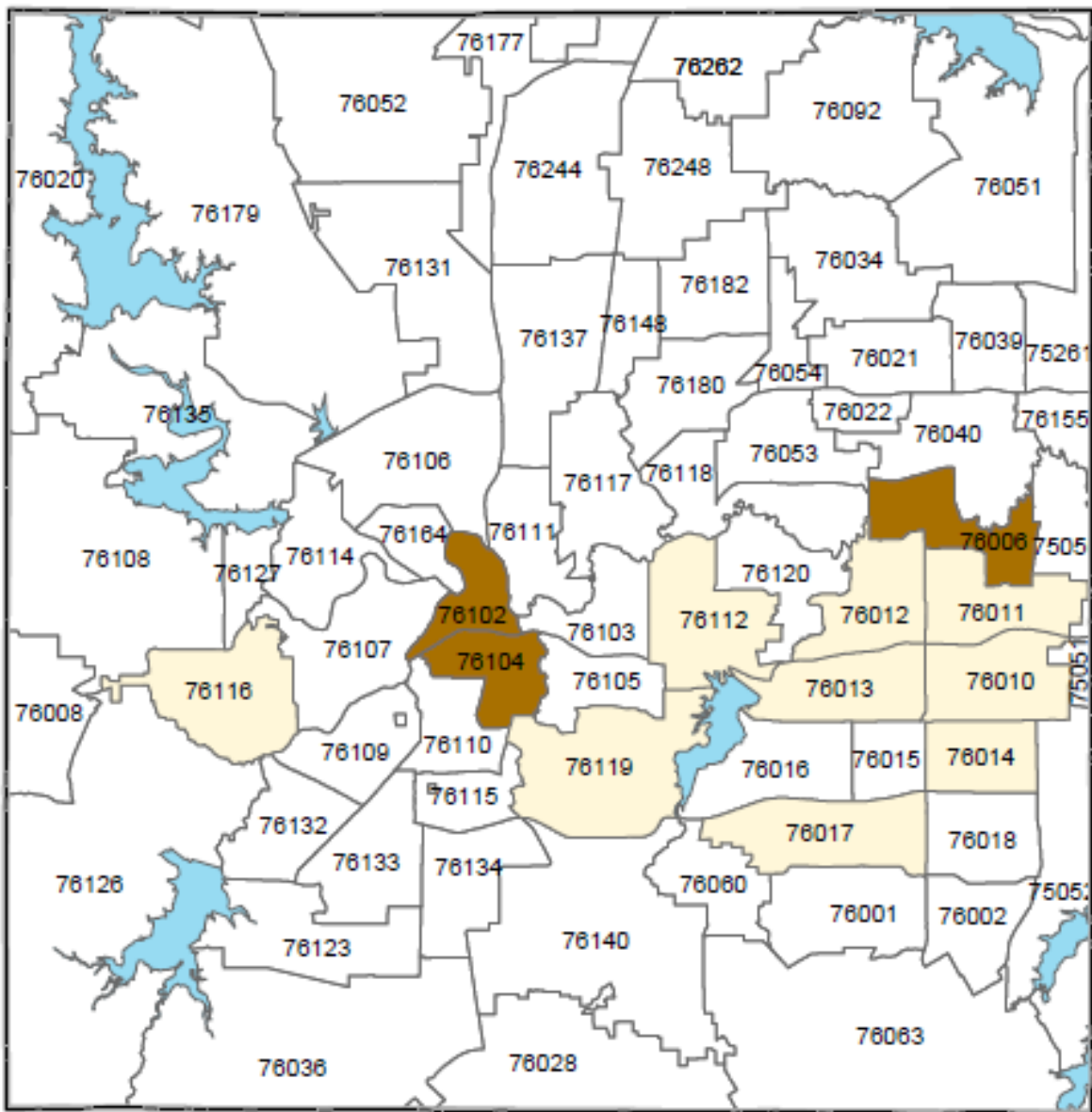
Rate per 100,000 population
NH = Non-Hispanic
Data source: Tarrant County Public Health

Figure 41. HIV by age group (in years), Tarrant County, 2013







Rate per 100,000 population
Data source: Tarrant County Public Health

Figure 42. Geographic distribution of HIV by ZIP Code, Tarrant County, 2013



These data were prepared by Tarrant County Public Health for its use, and may be revised any time, without notification. Tarrant County Public Health does not guarantee the correctness or accuracy of any features on this map. Tarrant County assumes no responsibility in connection therewith. Said data should not be edited by anyone other than designated personnel, or through written approval by GIS Manager. These data are for informational purposes only and should not create liability on the part of Tarrant County Government, any officer and/or employees thereof.

Rate per 100,000

- | | |
|---|---|
|  9.0 - 30.8 |  No or Excluded Data |
|  30.9 - 61.6 |  County Boundary |



8. *Streptococcus pneumoniae* (invasive)

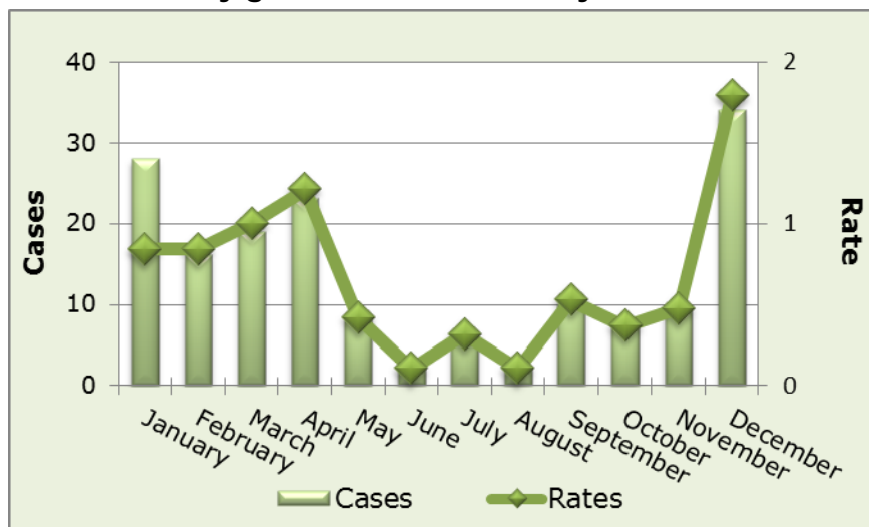
- **Causative Agent:** (bacterial) *Streptococcus pneumoniae*
- **Signs/Symptoms:** Bacterial infection of the blood, cerebral spinal fluid, or other normally sterile body fluid which may have originated from an infection ranging from a mild ear infection to severe pneumonia. Many people carry these bacteria in their nose and throat, not presenting with signs or symptoms.
- **Mode(s) of Transmission:** Contact with respiratory droplets of infected individuals.
- **Incubation Period:** 1-3 days
- **Period of Communicability:** 10-21 days

Figure 43. *Streptococcus pneumoniae* (invasive), Tarrant County, 2009-2013



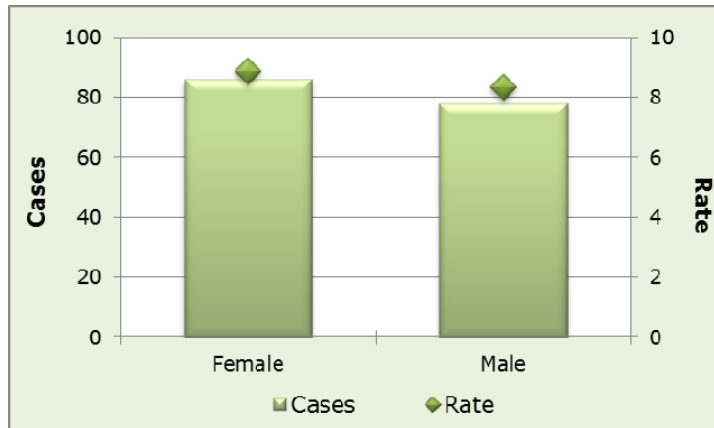
Rate per 100,000 population
Data source: Tarrant County Public Health

Figure 44. *Streptococcus pneumoniae* (invasive) fever by gender, Tarrant County, 2013



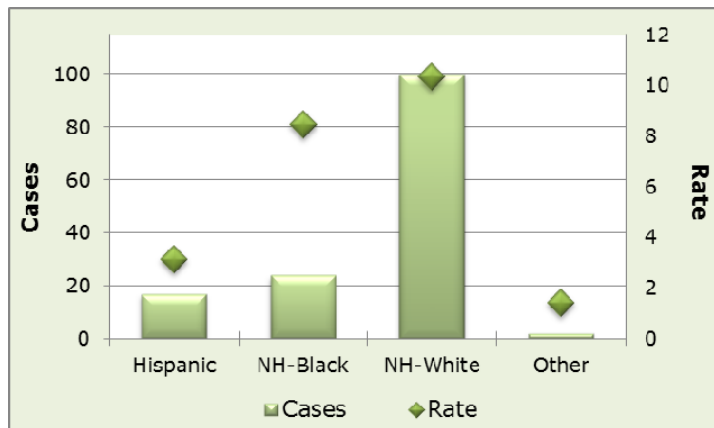
Rate per 100,000 population
Data source: Tarrant County Public Health

Figure 45. Streptococcus pneumonia (invasive) fever by gender, Tarrant County, 2013



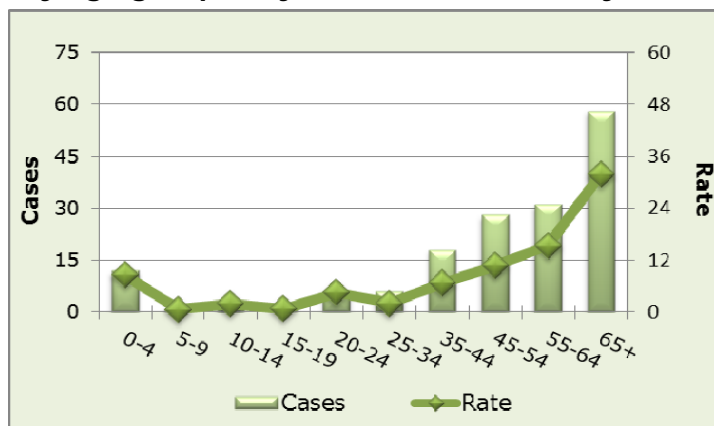
Rate per 100,000 population
Data source: Tarrant County Public Health

Figure 46. Streptococcus pneumonia (invasive) fever by race/ethnicity, Tarrant County, 2013



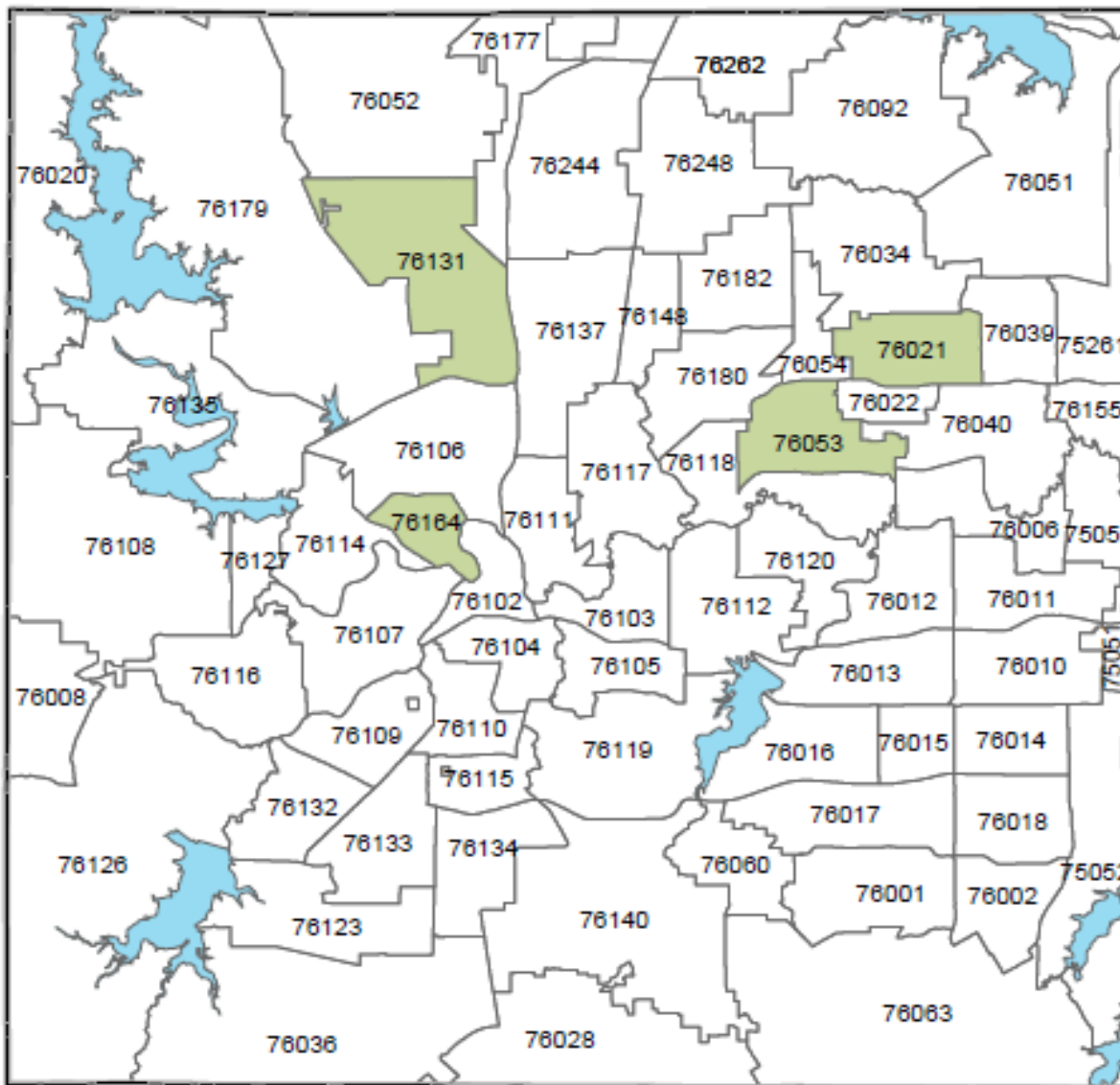
Rate per 100,000 population NH = Non-Hispanic
Data source: Tarrant County Public Health

Figure 47. Streptococcus pneumonia (invasive) fever by age group (in years), Tarrant County, 2013

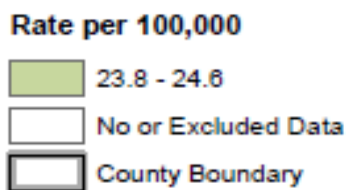


Rate per 100,000 population
Data source: Tarrant County Public Health

Figure 48. Geographic distribution of streptococcus pneumonia (invasive) fever by ZIP Code, Tarrant County, 2013



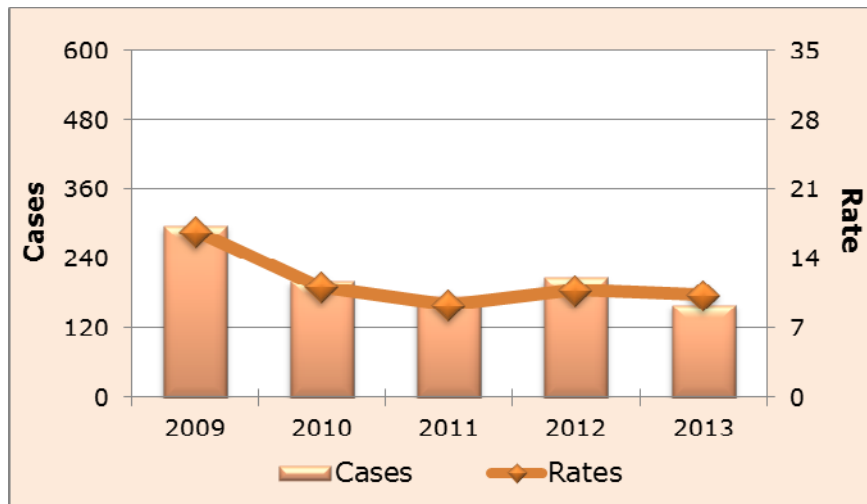
These data were prepared by Tarrant County Public Health for its use, and may be revised any time, without notification. Tarrant County Public Health does not guarantee the correctness or accuracy of any features on this map. Tarrant County assumes no responsibility in connection therewith. Said data should not be edited by anyone other than designated personnel, or through written approval by GIS Manager. These data are for informational purposes only and should not create liability on the part of Tarrant County Government, any officer and/or employees thereof.



9. Varicella (Chickenpox)

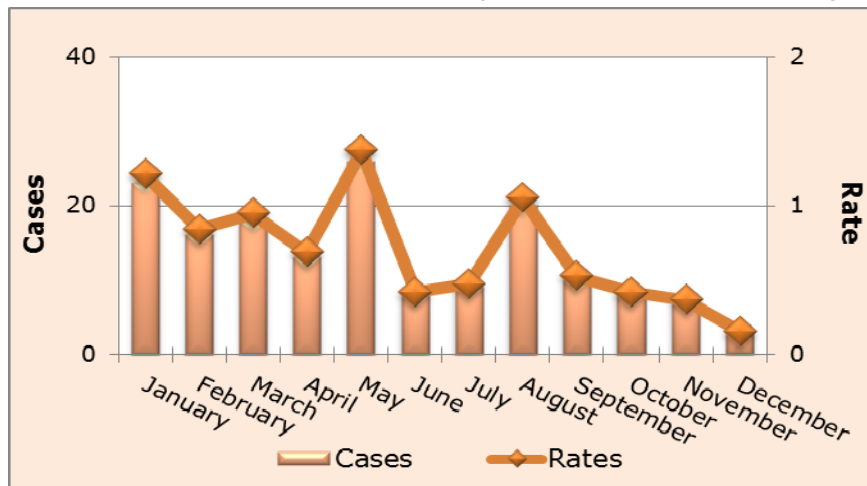
- **Causative Agent:** (viral) Varicella-zoster virus
- **Signs/Symptoms:** In unvaccinated individuals, fever and rash initially presenting as red bumps progressing to blister-type lesions which may last 3-4 days before drying. Rash and lesions are typically found in differing stages of development and usually in covered areas of the body; over 200 lesions may be present. In vaccinated individuals exhibiting breakthrough infections, less than 50 non-blister like bumps may appear typically without fever.
- **Mode(s) of Transmission:** Direct contact, droplet, or air borne contact of lesion fluid or respiratory secretions of infected individuals.
- **Incubation Period:** 10-21 days; commonly 14-16 days
- **Period of Communicability:** Up to 5 days, typically 1-2 days before rash onset and continuing until lesions are dry which is typically 5 days.

Figure 49. Varicella (Chickenpox), Tarrant County, 2009-2013



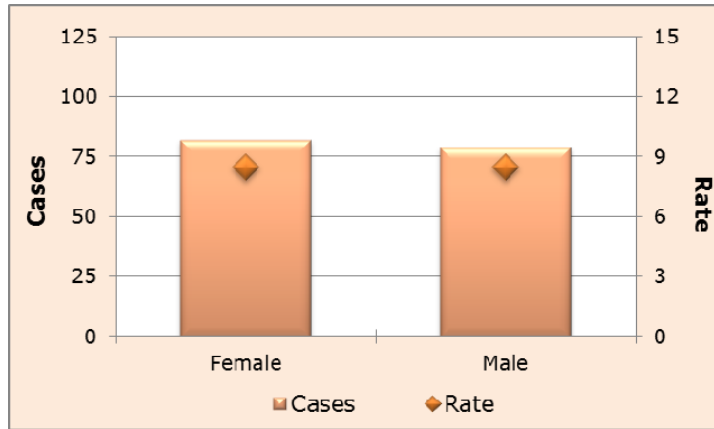
Rate per 100,000 population
Data source: Tarrant County Public Health

Figure 50. Varicella (Chickenpox) by month, Tarrant County, 2013



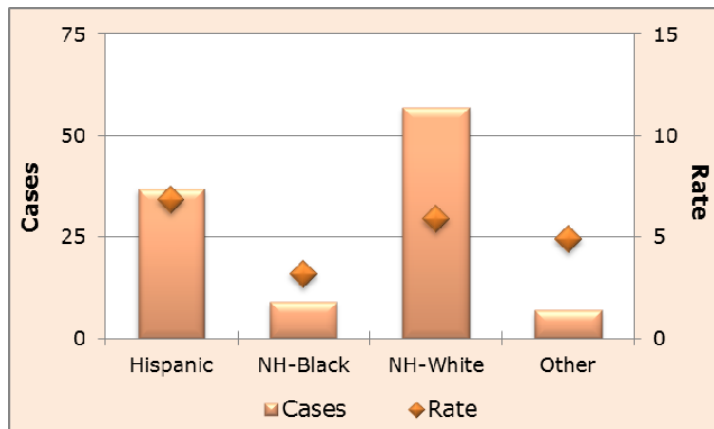
Rate per 100,000 population
Data source: Tarrant County Public Health

Figure 51. Varicella (Chickenpox) by gender, Tarrant County, 2013



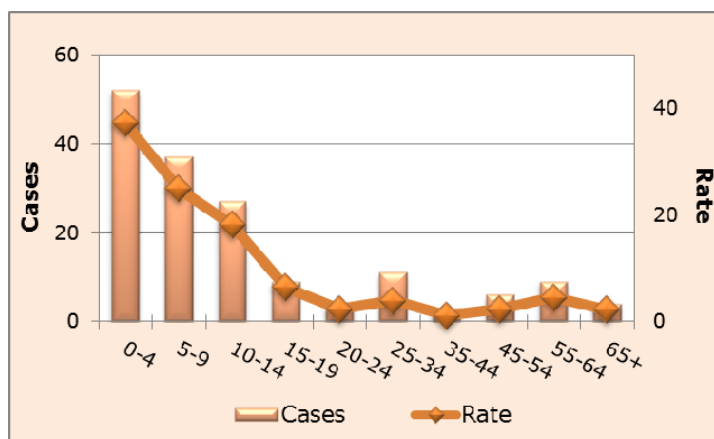
Rate per 100,000 population
Data source: Tarrant County Public Health

Figure 52. Varicella (Chickenpox) by race/ethnicity, Tarrant County, 2013



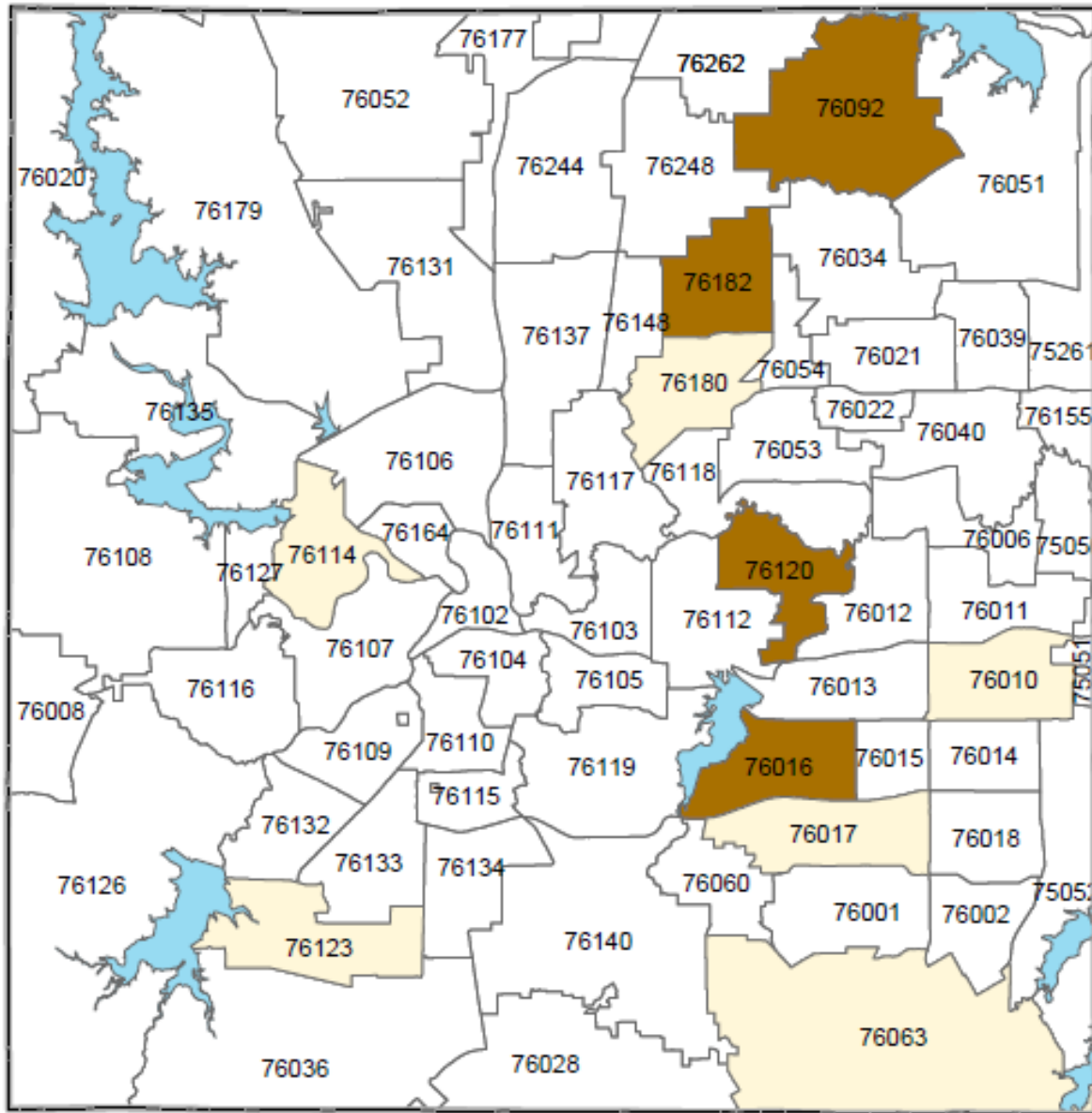
Rate per 100,000 population NH = Non-Hispanic
Data source: Tarrant County Public Health

Figure 53. Varicella (Chickenpox) by age group (in years), Tarrant County, 2013



Rate per 100,000 population
Data source: Tarrant County Public Health

Figure 54. Geographic distribution of varicella (chickenpox) by ZIP Code, Tarrant County, 2013



These data were prepared by Tarrant County Public Health for its use, and may be revised any time, without notification. Tarrant County Public Health does not guarantee the correctness or accuracy of any features on this map. Tarrant County assumes no responsibility in connection therewith. Said data should not be edited by anyone other than designated personnel, or through written approval by GIS Manager. These data are for informational purposes only and should not create liability on the part of Tarrant County Government, any officer and/or employees thereof.

Rate per 100,000

- 11.2 - 13.0
- No or Excluded Data
- 13.1 - 18.7
- County Boundary



10. *Shigellosis*

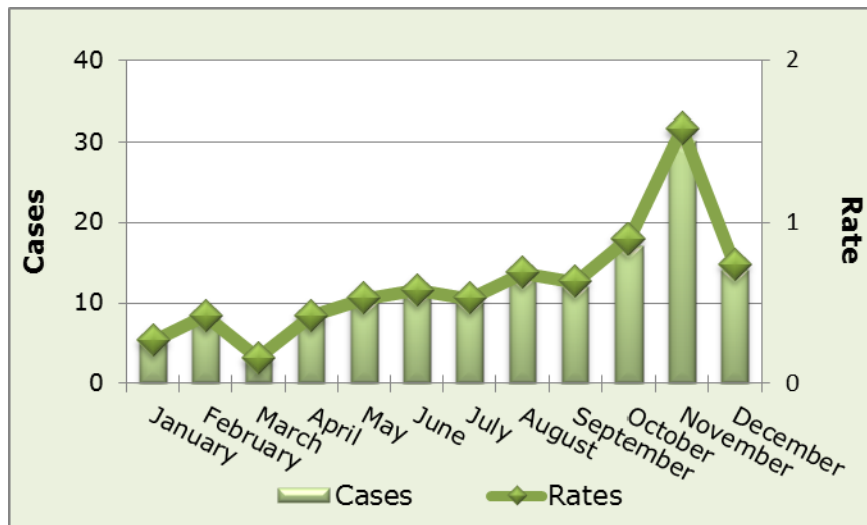
- **Causative Agent:** (bacterial) *Shigella species*
- **Signs/Symptoms:** Diarrhea (typically bloody), fever, abdominal pain, vomiting. Some people do not present with any symptoms.
- **Mode(s) of Transmission:** Direct fecal-oral contact or ingestion of food or water contamination with feces of an infected individual.
- **Incubation Period:** 12-96 hours, usually 1-3 days
- **Period of Communicability:** While signs/symptoms are present; those infected may carry and transmit the bacteria for up to four weeks after becoming infected.

Figure 55. *Shigellosis*, Tarrant County, 2009-2014



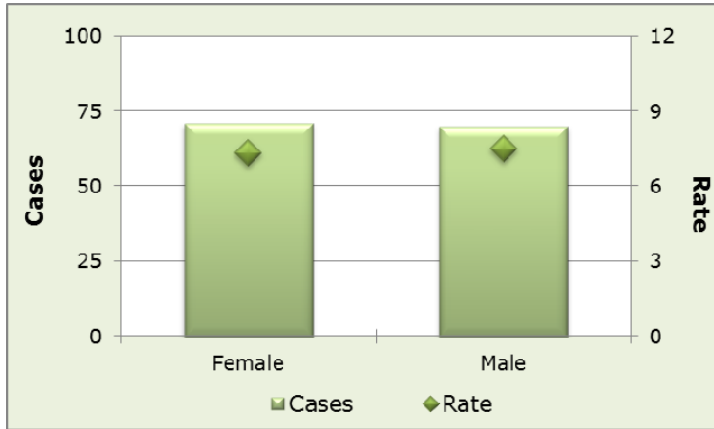
Rate per 100,000 population
Data source: Tarrant County Public Health

Figure 56. *Shigellosis* by month, Tarrant County, 2013



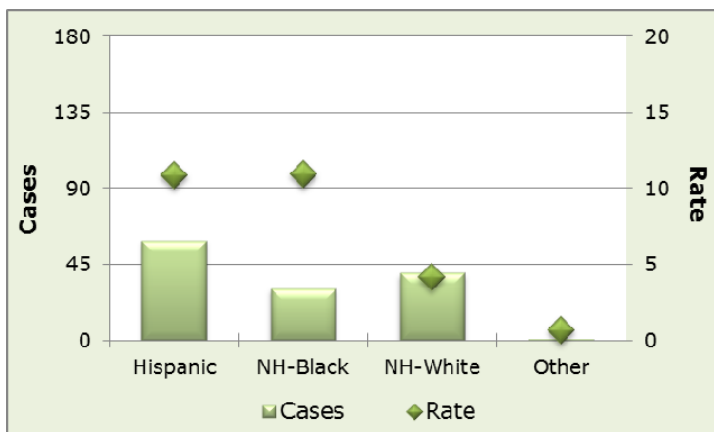
Rate per 100,000 population
Data source: Tarrant County Public Health

Figure 57. *Shigellosis* by gender, Tarrant County, 2013



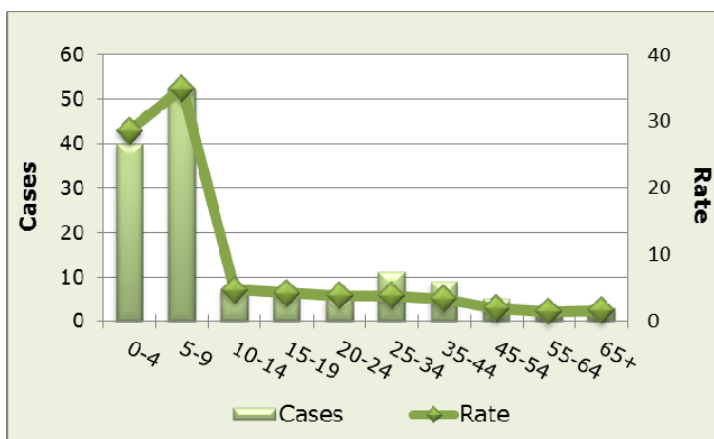
Rate per 100,000 population
Data source: Tarrant County Public Health

Figure 58. *Shigellosis* by race/ethnicity, Tarrant County, 2013



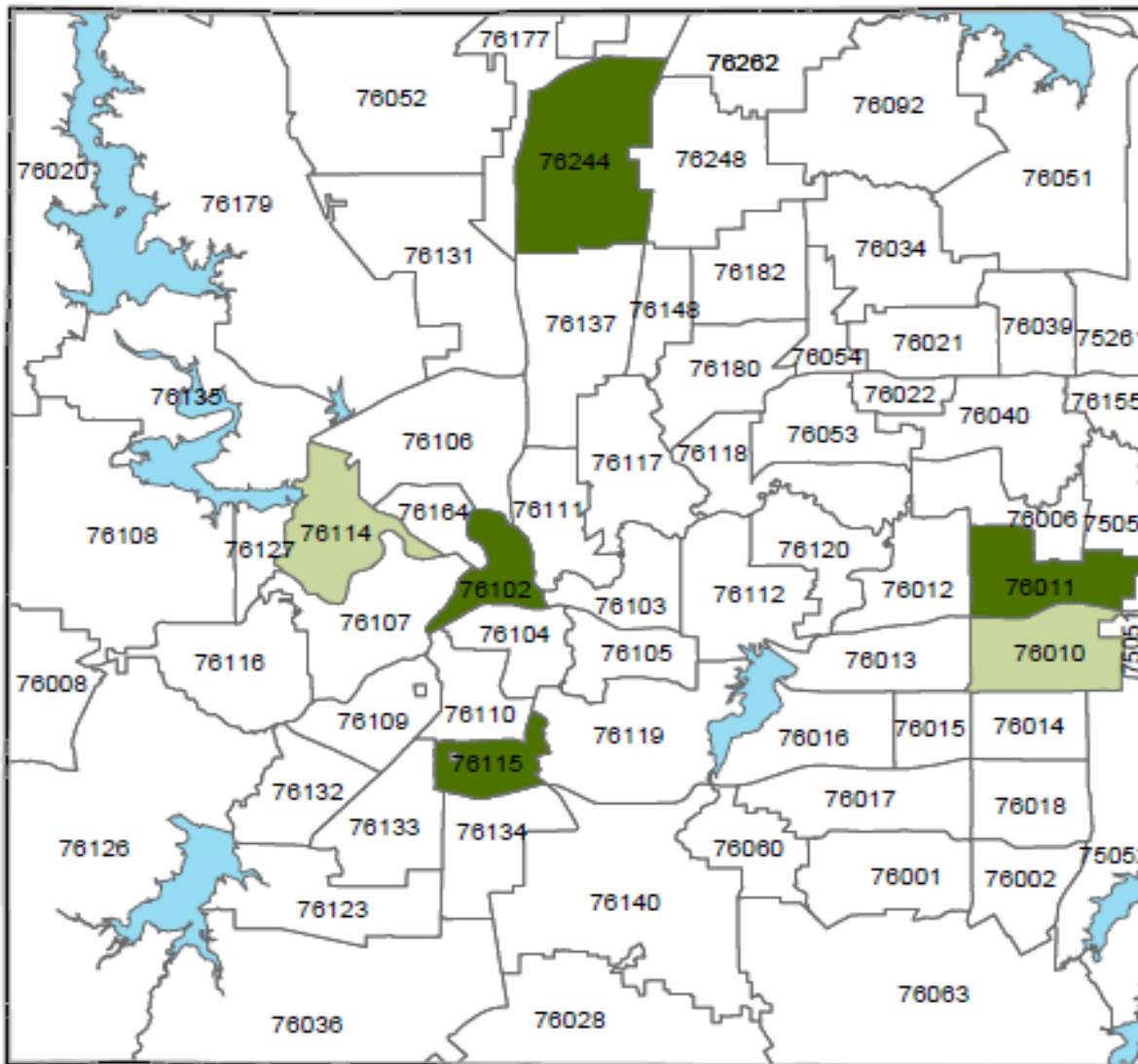
Rate per 100,000 population NH = Non-Hispanic
Data source: Tarrant County Public Health

Figure 59. *Shigellosis* by age group (in years), Tarrant County, 2013



Rate per 100,000 population
Data source: Tarrant County Public Health

Figure 60. Geographic distribution of *Shigellosis* by ZIP code, Tarrant County, 2013



These data were prepared by Tarrant County Public Health for its use, and may be revised any time, without notification. Tarrant County Public Health does not guarantee the correctness or accuracy of any features on this map. Tarrant County assumes no responsibility in connection therewith. Said data should not be edited by anyone other than designated personnel, or through written approval by GIS Manager. These data are for informational purposes only and should not create liability on the part of Tarrant County Government, any officer and/or employees thereof.

Rate per 100,000

- 14.4 - 30.8
- 30.9 - 61.6
- No or Excluded Data
- County Boundary





Tarrant County Public Health
1101 S. Main Street Fort Worth, TX
76104 (817) 321-5350
www.tarrantcounty.com/ehealth