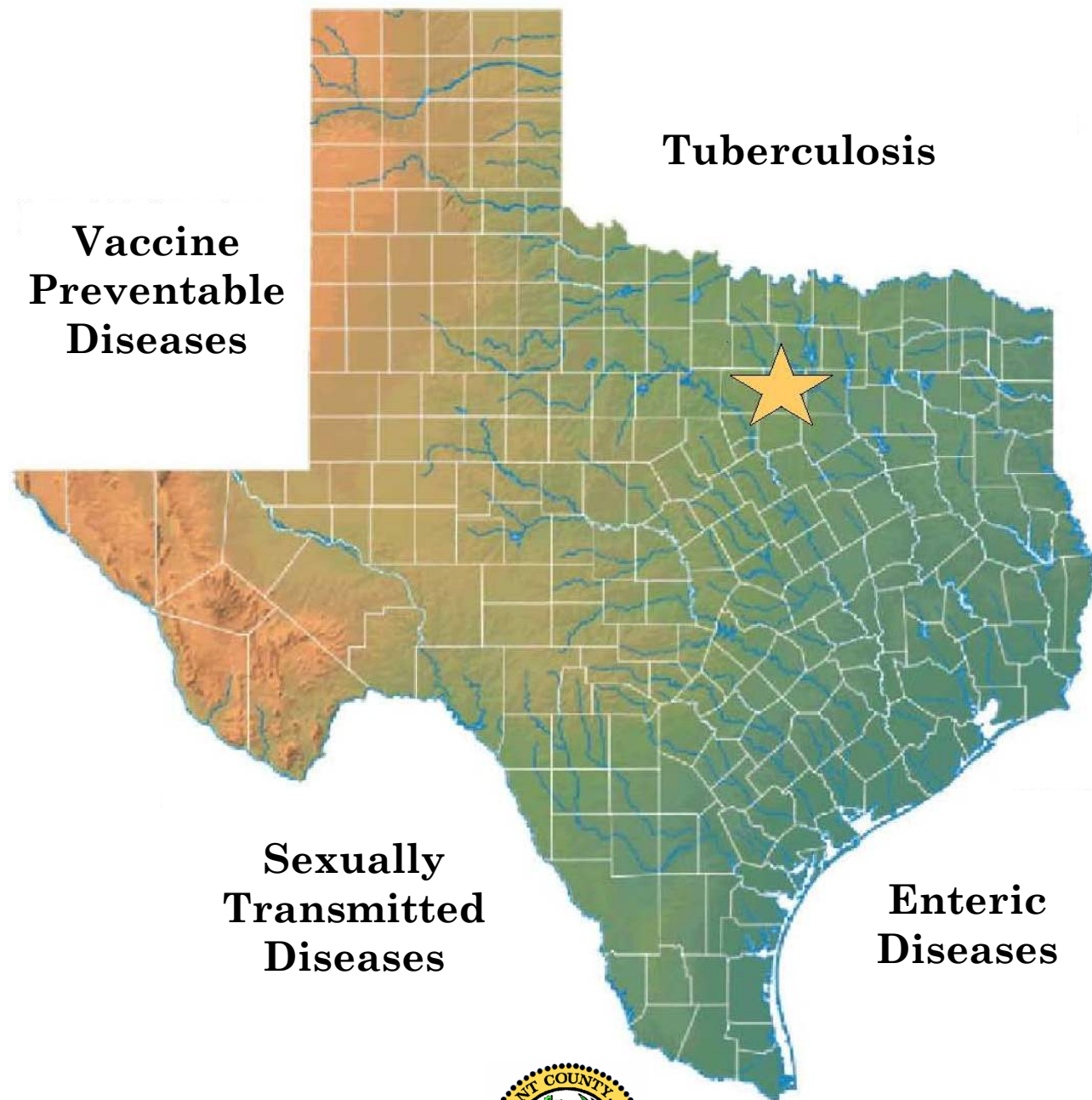


Communicable Disease Trends

Tarrant County 2005-2010



Tarrant County Public Health

Safeguarding our community's health

Communicable Diseases Trends Tarrant County, 2005-2010



Tarrant County Public Health

Lou K. Brewer, RN, MPH
Health Director

*Division of Epidemiology and Health Information
Tarrant County Public Health
1101 S. Main Street
Fort Worth, Texas 76104*

*Communicable Disease Reporting
Phone: (817) 321-5350
Fax: (817) 850-8921*

*24/7 Disease Reporting
Phone: (817) 994-3708*

Authors

Micky M. Moerbe, MPH
Biostatistician
Tarrant County Public Health

Bijalkumari Lad
Student Intern
School of Public Health
UNT Health Science Center

Anita K. Kurian, MBBS, DrPH
Division Manager & Chief Epidemiologist
Tarrant County Public Health

Acknowledgements

Liz Izaguirre, MPH
Influenza Surveillance Specialist
Tarrant County Public Health

Michelle S. Markham, MS
GIS Analyst
Tarrant County Public Health

Suggested Citation

Communicable Disease Trends, Tarrant County, 2005-2010.
Tarrant County Public Health, March 2012.

TABLE OF CONTENTS

Background Information for Statistical Summaries	1
Notable Findings	2
Tarrant County Population Distributions by gender, race/ethnicity, and age group	3
Ten Leading Communicable Diseases in Tarrant County, 2005-2010	4
Vaccine Preventable Diseases	
Acute Hepatitis A	5
Acute Hepatitis B	8
Pertussis	11
Invasive Pneumococcal Disease	14
Varicella	17
Tuberculosis	20
Sexually Transmitted Diseases	
Chlamydia	23
Early Syphilis	26
Gonorrhea	29
HIV and AIDS	32
Enteric Diseases	
Campylobacteriosis	38
<i>Escherichia coli</i> Infection	41
Salmonellosis	44
Shigellosis	47
Appendix : Sub-County Region Map, Tarrant County, 2005-2010	50

LIST OF TABLES

Table 1: Population Estimates, Tarrant County, 2005-2010	3
Table 2: Ten Leading Communicable Diseases, Tarrant County, 2005-2010.....	4
Table 3: Acute Hepatitis A, Tarrant County, 2005-2010	7
Table 4: Acute Hepatitis B, Tarrant County, 2005-2010.....	10
Table 5: Pertussis, Tarrant County, 2005-2010	13
Table 6: Invasive Pneumococcal Disease, Tarrant County, 2005-2010	16
Table 7: Varicella, Tarrant County, 2005-2010.....	19
Table 8: Tuberculosis, Tarrant County, 2005-2010.....	22
Table 9: Chlamydia, Tarrant County, 2005-2010.....	25
Table 10: Early Syphilis, Tarrant County, 2005-2010.....	28
Table 11: Gonorrhea, Tarrant County, 2005-2010	31
Table 12: HIV, Tarrant County, 2005-2010	34
Table 13: AIDS, Tarrant County, 2005-2010	37
Table 14: Campylobacteriosis, Tarrant County, 2005-2010.....	40
Table 15: <i>E. coli</i> Infection, Tarrant County, 2005-2010	43
Table 16: Salmonellosis, Tarrant County, 2005-2010.....	46
Table 17: Shigellosis, Tarrant County, 2005-2010.....	49

LIST OF FIGURES

Figure 1: Acute Hepatitis A by gender, Tarrant County, 2005-2010.....	5
Figure 2: Acute Hepatitis A by race/ethnicity, Tarrant County, 2005-2010.....	5
Figure 3: Acute Hepatitis A by sub-county region, Tarrant County, 2005-2010.....	6
Figure 4: Acute Hepatitis B by gender, Tarrant County, 2005-2010.....	8
Figure 5: Acute Hepatitis B by race/ethnicity, Tarrant County, 2005-2010.....	8
Figure 6: Acute Hepatitis B by age group (in years), Tarrant County, 2005-2010.....	9
Figure 7: Acute Hepatitis B by sub-county region, Tarrant County, 2005-2010.....	9
Figure 8: Pertussis by gender, Tarrant County, 2005-2010.....	11
Figure 9: Pertussis by race/ethnicity, Tarrant County, 2005-2010.....	11
Figure 10: Pertussis by age group (in years), Tarrant County, 2005-2010.....	12
Figure 11: Pertussis by sub-county region, Tarrant County, 2005-2010.....	12
Figure 12: Invasive Pneumococcal Disease by gender, Tarrant County, 2005-2010.....	14
Figure 13: Invasive Pneumococcal Disease by race/ethnicity, Tarrant County, 2005-2010.....	14
Figure 14: Invasive Pneumococcal Disease by age group (in years), Tarrant County, 2005-2010.....	15
Figure 15: Invasive Pneumococcal Disease by sub-county region, Tarrant County, 2005-2010.....	15
Figure 16: Varicella by gender, Tarrant County, 2005-2010.....	17
Figure 17: Varicella by race/ethnicity, Tarrant County, 2005-2010.....	17
Figure 18: Varicella by age group (in years), Tarrant County, 2005-2010.....	18
Figure 19: Varicella by sub-county region, Tarrant County, 2005-2010.....	18
Figure 20: Tuberculosis by gender, Tarrant County, 2005-2010.....	20
Figure 21: Tuberculosis by race/ethnicity, Tarrant County, 2005-2010.....	20
Figure 22: Tuberculosis by age group (in years), Tarrant County, 2005-2010.....	21
Figure 23: Tuberculosis by sub-county region, Tarrant County, 2005-2010.....	21
Figure 24: Chlamydia by gender, Tarrant County, 2005-2010.....	23
Figure 25: Chlamydia by race/ethnicity, Tarrant County, 2005-2010.....	23
Figure 26: Chlamydia by age group (in years), Tarrant County, 2005-2010.....	24
Figure 27: Chlamydia by sub-county region, Tarrant County, 2005-2010.....	24
Figure 28: Early Syphilis by gender, Tarrant County, 2005-2010.....	26
Figure 29: Early Syphilis by race/ethnicity, Tarrant County, 2005-2010.....	26

Figure 30: Early Syphilis by age group (in years), Tarrant County, 2005-2010	27
Figure 31: Early Syphilis by sub-county region, Tarrant County, 2005-2010	27
Figure 32: Gonorrhea by gender, Tarrant County, 2005-2010	29
Figure 33: Gonorrhea by race/ethnicity, Tarrant County, 2005-2010	29
Figure 34: Gonorrhea by age group (in years), Tarrant County, 2005-2010.....	30
Figure 35: Gonorrhea by sub-county region, Tarrant County, 2005-2010.....	30
Figure 36: HIV by gender, Tarrant County, 2005-2010	32
Figure 37: HIV by race/ethnicity, Tarrant County, 2005-2010	32
Figure 38: HIV by age group (in years), Tarrant County, 2005-2010.....	33
Figure 39: HIV by sub-county region, Tarrant County, 2005-2010	33
Figure 40: AIDS by gender, Tarrant County, 2005-2010.....	35
Figure 41: AIDS by race/ethnicity, Tarrant County, 2005-2010.....	35
Figure 42: AIDS by age group (in years), Tarrant County, 2005-2010.....	36
Figure 43: AIDS by sub-county region, Tarrant County, 2005-2010.....	36
Figure 44: Campylobacteriosis by gender, Tarrant County, 2005-2010	38
Figure 45: Campylobacteriosis by race/ethnicity, Tarrant County, 2005-2010	38
Figure 46: Campylobacteriosis by age group (in years), Tarrant County, 2005-2010	39
Figure 47: Campylobacteriosis by sub-county region, Tarrant County, 2005-2010	39
Figure 48: <i>E. coli</i> by gender, Tarrant County, 2005-2010.....	41
Figure 49: <i>E. coli</i> by race/ethnicity, Tarrant County, 2005-2010.....	41
Figure 50: <i>E. coli</i> by age group (in years), Tarrant County, 2005-2010	42
Figure 51: <i>E. coli</i> by sub-county region, Tarrant County, 2005-2010.....	42
Figure 52: Salmonellosis by gender, Tarrant County, 2005-2010.....	44
Figure 53: Salmonellosis by race/ethnicity, Tarrant County, 2005-2010.....	44
Figure 54: Salmonellosis by age group (in years), Tarrant County, 2005-2010	45
Figure 55: Salmonellosis by sub-county region, Tarrant County, 2005-2010.....	45
Figure 56: Shigellosis by gender, Tarrant County, 2005-2010	47
Figure 57: Shigellosis by race/ethnicity, Tarrant County, 2005-2010.....	47
Figure 58: Shigellosis by age group (in years), Tarrant County, 2005-2010	48
Figure 59: Shigellosis by sub-county region, Tarrant County, 2005-2010	48

INTRODUCTION

Tarrant County Communicable Disease Trends report depicts the trends in the incidences of the most commonly reported communicable diseases in Tarrant County for the years 2005 through 2010. Trend analyses are available due to continuous ongoing surveillance by Tarrant County Public Health (TCPH) and collaborative efforts across multiple TCPH divisions. This report provides trends for the total number of reported cases and rates by gender, race/ethnicity, age group, and sub-county region. Diseases highlighted in this report include:

- **Vaccine preventable diseases:** Acute Hepatitis A, Acute Hepatitis B, Pertussis, Invasive Pneumococcal Disease, Varicella.
- **Tuberculosis**
- **Sexually Transmitted Diseases:** Chlamydia, Early Syphilis, Gonorrhea, HIV & AIDS.
- **Enteric Diseases:** Campylobacteriosis, *Escherichia coli* Infection, Salmonellosis, Shigellosis.

BACKGROUND INFORMATION FOR STATISTICAL SUMMARIES

The frequency and incidence rate of communicable diseases are presented overall, by gender, race/ethnicity, age group, and sub-county region of residence. Incidence rates are calculated as follows:

- **Numerator** – annual incidence of disease in Tarrant County
- **Denominator** – Tarrant county population at risk for each year
- **Rate** – per 100,000 population

Incidence rates are an essential public health measure; however, the interpretation of these rates should be made with caution. Rates based on numbers less than 20 cases are not recommended for reliable comparison because such rates fluctuate widely. The tables in this report include rates for diseases with five or more cases; conditions with less than five cases are not presented to protect confidentiality.

Population estimates were obtained from the Texas Department of State Health Services.

Discrepancies in reported cases may be due to changes in reporting rules during the six years. It is important to note that diseases showing positive trends may reflect not only actual increases in disease incidences, but also enhanced surveillance and/or better reporting from health care providers or the public.

Sub-county level graphs are presented in this report for all diseases and show geographical differences in disease reporting frequencies and rates. A map defining the sub-county regions used in this report is available in the Appendix. The colors used in the map correspond with colors used in the sub-county graphs.

COMMUNICABLE DISEASE TRENDS

NOTABLE FINDINGS

- *Chlamydia* was the most commonly reported communicable disease from 2005 to 2010.
- While some vaccine preventable diseases (VPDs) such as *Hepatitis A*, *Hepatitis B*, and *Varicella* showed an overall decline from 2005 to 2010, other VPDs like *Pertussis* and *Invasive Pneumococcal Disease* increased during this six-year period.
- An almost 13-fold increase in the incidence of *Pertussis* occurred in Northeast Tarrant County from 2007 to 2008 (10 cases to 128 cases).
- The incidence of *Tuberculosis* among males was almost twice that of females and the highest rates were observed among the Other race/ethnicity group and those residing in the central sub-county region.
- Overall from 2005 to 2010, *sexually transmitted diseases* were reported among Blacks at a rate nine times higher than that of Whites, with the largest rate gap occurring within *Gonorrhea* cases where the Black to White rate ratio was 17 to 1.
- Incidence rates for *Early Syphilis* and *HIV/AIDS* were about two times higher in males compared to females, whereas incidence rates of *Chlamydia* were approximately three to four times higher among females compared to males.
- Enteric infections such as *Campylobacteriosis* and *Shigellosis* were most frequently reported among children less than 10 years of age.
- *Salmonellosis* was the most frequently reported enteric disease in Tarrant County from 2005 to 2010.
- *Tuberculosis* has not appeared in the top ten communicable disease rankings for Tarrant County since 2005.
- Between 2005 and 2010, some of the highest rates of *Invasive Pneumococcal Disease* occurred among those aged 65 years and older.

TARRANT COUNTY POPULATION ESTIMATES BY YEAR

Table 1. Population Estimates, Tarrant County, 2005-2010

	2005 Total (Percent)	2006 Total (Percent)	2007 Total (Percent)	2008 Total (Percent)	2009 Total (Percent)	2010 Total (Percent)	Percent Change 2005-10	
Total	1,621,055 (100)	1,635,837 (100)	1,682,034 (100)	1,738,231 (100)	1,780,891 (100)	1,825,548 (100)	(+) 12.6	
Gender	Male	805,801 (49.7)	814,248 (49.8)	836,747 (49.7)	872,354 (50.2)	895,092 (50.3)	918,980 (50.3)	(+) 14.0
	Female	815,254 (50.3)	821,589 (50.2)	845,287 (50.3)	865,877 (49.8)	885,799 (49.7)	906,568 (49.7)	(+) 11.2
Race / Ethnicity	White	914,432 (56.4)	903,992 (55.3)	903,591 (53.7)	902,524 (51.9)	899,365 (50.5)	895,694 (49.1)	(-) 2.0
	Black	218,378 (13.5)	220,152 (13.5)	227,496 (13.5)	233,565 (13.4)	239,327 (13.4)	245,148 (13.4)	(+) 12.3
	Hispanic	397,728 (24.5)	416,491 (25.5)	447,009 (26.6)	488,442 (28.1)	520,733 (29.2)	555,001 (30.4)	(+) 39.5
	Other	90,517 (5.6)	95,202 (5.8)	103,938 (6.2)	113,700 (6.5)	121,466 (6.8)	129,705 (7.1)	(+) 43.3
Age Group	0-4 yrs	134,014 (8.3)	133,811 (8.2)	136,423 (8.1)	139,955 (8.1)	142,545 (8.0)	145,184 (7.9)	(+) 8.3
	5-9 yrs	120,772 (7.5)	120,944 (7.4)	124,424 (7.4)	127,037 (7.3)	130,910 (7.4)	135,107 (7.4)	(+) 11.9
	10-14 yrs	122,571 (7.6)	122,291 (7.5)	122,490 (7.3)	122,447 (7.0)	123,232 (6.9)	124,281 (6.8)	(+) 1.4
	15-19 yrs	119,708 (7.4)	121,283 (7.4)	123,778 (7.4)	127,321 (7.3)	129,114 (7.2)	130,043 (7.1)	(+) 8.6
	20-24 yrs	114,310 (7.1)	114,757 (7.0)	118,168 (7.0)	123,222 (7.1)	126,851 (7.1)	131,116 (7.2)	(+) 14.7
	25-34 yrs	258,578 (16.0)	261,268 (16.0)	269,296 (16.0)	282,812 (16.3)	290,226 (16.3)	297,250 (16.3)	(+) 15.0
	35-44 yrs	252,789 (15.6)	254,855 (15.6)	263,014 (15.6)	276,158 (15.9)	281,820 (15.8)	289,394 (15.9)	(+) 14.5
	45-54 yrs	222,990 (13.8)	226,518 (13.8)	232,886 (13.8)	239,982 (13.8)	245,284 (13.8)	249,542 (13.6)	(+) 11.9
	55-64 yrs	142,835 (8.8)	146,201 (8.9)	155,314 (9.2)	162,042 (9.3)	168,998 (9.5)	177,076 (9.7)	(+) 24.0
≥65 yrs	132,488 (8.2)	133,909 (8.2)	136,241 (8.1)	137,255 (7.9)	141,911 (8.0)	146,555 (8.1)	(+) 10.6	

Data source: Texas Department of State Health Services



Top Ten Overall

Table 2. Ten leading communicable diseases by year, Tarrant County, 2005-2010

	2005 n (Rate)	2006 n (Rate)	2007 n (Rate)	2008 n (Rate)	2009 n (Rate)	2010 n (Rate)
1	Chlamydia 5,097 (314.4)	Chlamydia 5,345 (326.7)	Chlamydia 5,577 (331.6)	Chlamydia 7,798 (448.6)	Chlamydia 7,795 (437.7)	Chlamydia 7,945 (435.2)
2	Gonorrhea 2,476 (152.7)	Gonorrhea 2,685 (164.1)	Gonorrhea 2,564 (152.4)	Hep. C, chronic 3,536 (203.4)	Hep. C, chronic 2,738 (153.7)	Gonorrhea 2,526 (138.4)
3	Varicella 744 (45.9)	Hep. C, chronic 2,470 (151.0)	Hep. C, chronic 2,562 (152.3)	Gonorrhea 2,901 (166.9)	Gonorrhea 2,435 (136.7)	Salmonellosis 362 (19.8)
4	Aseptic Meningitis 241 (14.9)	Varicella 1,564 (95.6)	Hep. B, chronic 808 (48.0)	Hep. B, chronic 796 (45.8)	Hep. B, chronic 719 (40.4)	Pertussis 283 (15.5)
5	HIV 183 (11.3)	Hep. B, chronic 430 (26.3)	Varicella 796 (47.3)	Varicella 507 (29.2)	Salmonellosis 304 (17.1)	Early Syphilis 259 (14.2)
6	Salmonellosis 174 (10.7)	Salmonellosis 298 (18.2)	Aseptic Meningitis 282 (16.8)	Cryptosporidiosis 492 (28.3)	Varicella 298 (16.7)	Shigellosis 250 (13.7)
7	Early Syphilis 168 (10.4)	Aseptic Meningitis 257 (15.7)	Early Syphilis 271 (16.1)	Salmonellosis 389 (22.4)	Early Syphilis 280 (15.7)	Aseptic Meningitis 218 (11.9)
8	Tuberculosis 128 (7.9)	Hep. B, acute 246 (15.0)	Salmonellosis 249 (14.8)	Pertussis 312 (17.9)	HIV 233 (13.1)	HIV 206 (11.3)
9	Hep. B, acute 105 (6.5)	Shigellosis 161 (9.8)	HIV 167 (9.9)	Aseptic Meningitis 191 (11.0)	Aseptic Meningitis 228 (12.8)	Varicella 202 (11.1)
10	Pertussis 76 (4.7)	HIV 160 (9.8)	<i>S. pneumoniae</i> , inv. 135 (8.0)	HIV 179 (10.3)	Pertussis 202 (11.3)	<i>S. pneumoniae</i> , inv. 189 (10.4)

n = number of cases; Rate per 100,000 population

Note: Chronic Hepatitis C excluded from rankings in 2005 and 2010

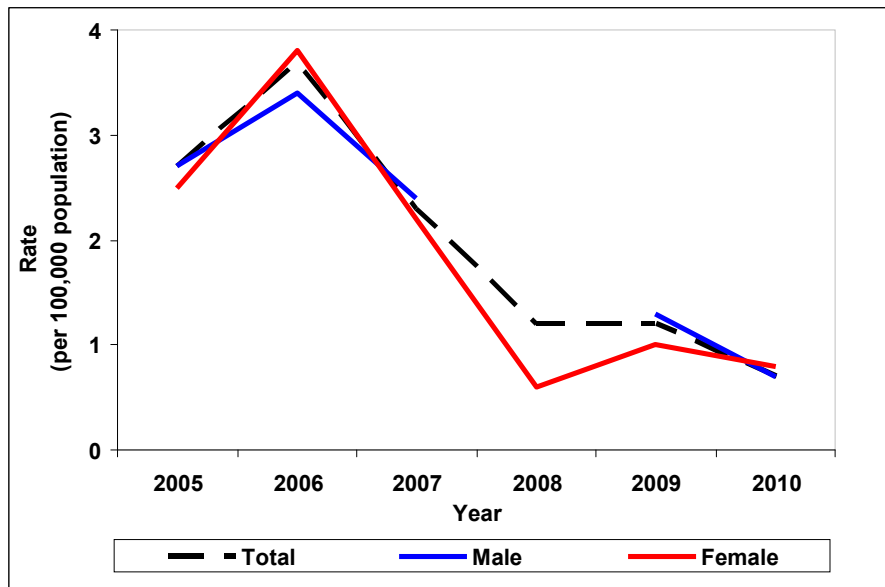
Data source: Tarrant County Public Health

VACCINE PREVENTABLE DISEASES

Acute Hepatitis A

Hepatitis A is an acute infectious disease of the liver caused by the Hepatitis A virus (HAV). It is transmitted from person-to-person by ingestion of contaminated food or water and usually spreads via the fecal-oral route.

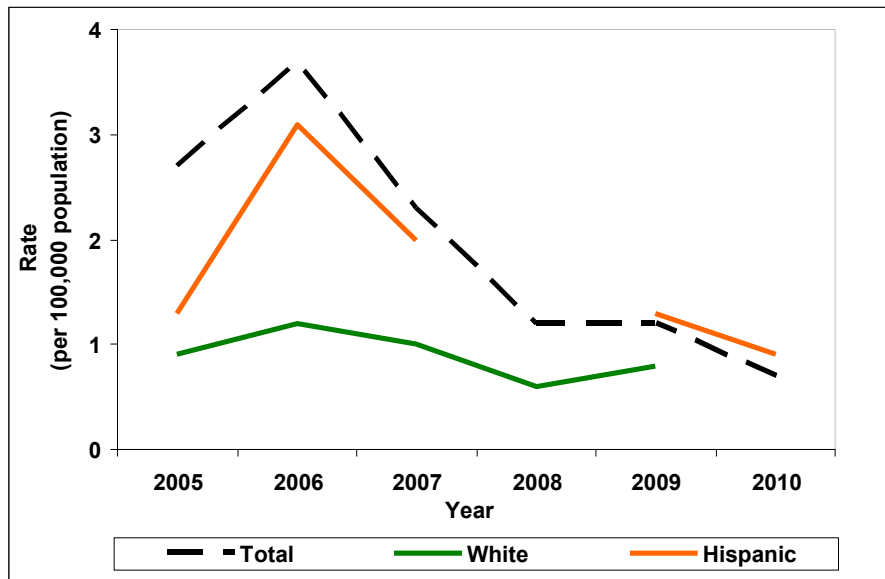
Figure 1. Acute Hepatitis A by gender, Tarrant County, 2005-2010



Acute Hepatitis A incidence rates increased in 2006 followed by a decrease to a six year low in 2010.

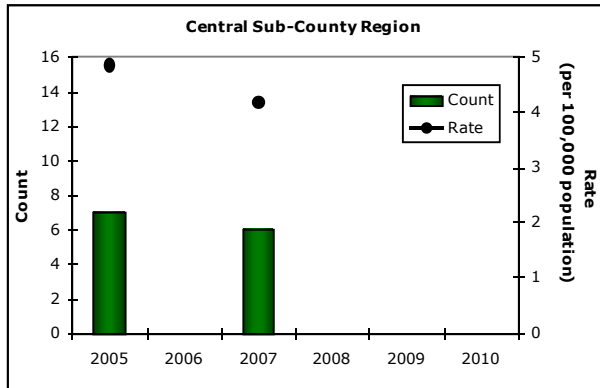
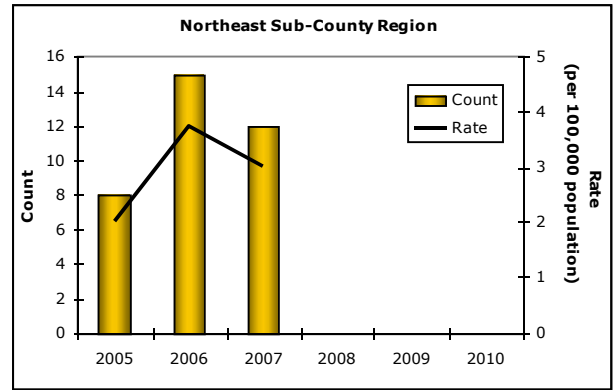
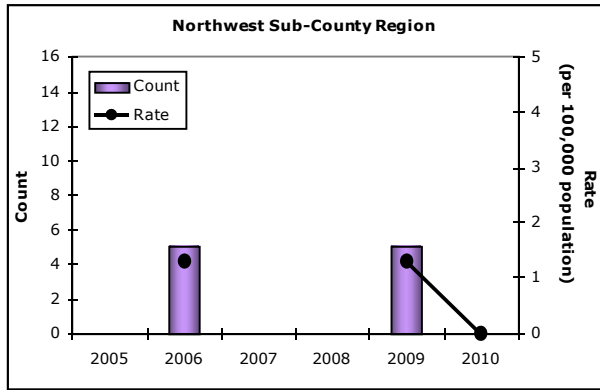
Note: The numerator was too small for rate calculation for Male (2008)
Data source: Tarrant County Public Health

Figure 2. Acute Hepatitis A by race/ethnicity, Tarrant County, 2005-2010



Note: The numerator was too small for rate calculation for Black, Other, and Hispanic (2008)
Data source: Tarrant County Public Health

Figure 3. Acute Hepatitis A by sub-county region, Tarrant County, 2005-2010



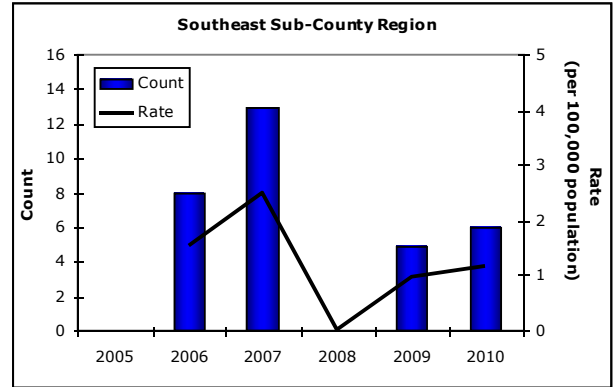
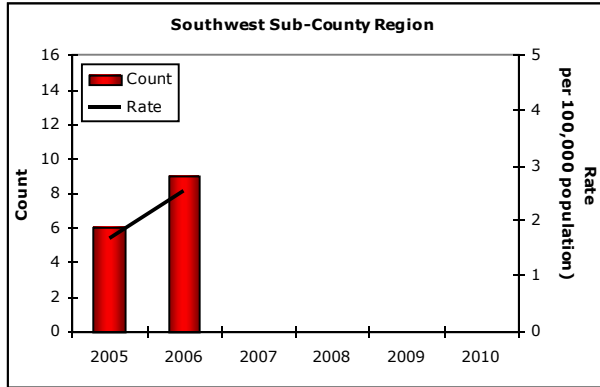
Less than five cases not shown

Rates not calculated for less than five cases

Rates based on less than 20 cases are considered unstable, and should be interpreted with caution

Map of sub-county areas with ZIP codes available in Appendix

Data source: Tarrant County Public Health



Due to the small number of Acute Hepatitis A cases, these data are not shown graphically by age group.

Table 3. Acute Hepatitis A, Tarrant County, 2005-2010

	2005 Total (Rate)	2006 Total (Rate)	2007 Total (Rate)	2008 Total (Rate)	2009 Total (Rate)	2010 Total (Rate)	
Total	43 (2.7)	60 (3.7)	39 (2.3)	20 (1.2)	21 (1.2)	13 (0.7)	
Gender	Male	22 (2.7)	28 (3.4)	20 (2.4)	< 5 @	12 (1.3)	6 (0.7)
	Female	20 (2.5)	31 (3.8)	19 (2.2)	5 (0.6)	9 (1.0)	7 (0.8)
Race / Ethnicity	White	8 (0.9)	11 (1.2)	9 (1.0)	5 (0.6)	7 (0.8)	< 5 @
	Black	< 5 @	< 5 @	< 5 @	0 (0.0)	< 5 @	< 5 @
	Hispanic	5 (1.3)	13 (3.1)	9 (2.0)	< 5 @	7 (1.3)	5 (0.9)
	Other	0 (0.0)	< 5 @	< 5 @	0 (0.0)	< 5 @	0 (0.0)
Age Groups	0-4 yrs	< 5 @	< 5 @	< 5 @	< 5 @	0 (0.0)	0 (0.0)
	5-9 yrs	< 5 @	< 5 @	< 5 @	0 (0.0)	< 5 @	0 (0.0)
	10-14 yrs	< 5 @	< 5 @	< 5 @	0 (0.0)	0 (0.0)	0 (0.0)
	15-19 yrs	0 (0.0)	< 5 @	< 5 @	< 5 @	< 5 @	< 5 @
	20-24 yrs	0 (0.0)	< 5 @	< 5 @	0 (0.0)	< 5 @	0 (0.0)
	25-34 yrs	< 5 @	< 5 @	< 5 @	0 (0.0)	< 5 @	6 (2.0)
	35-44 yrs	< 5 @	6 (2.4)	< 5 @	< 5 @	< 5 @	< 5 @
	45-54 yrs	6 (2.7)	10 (4.4)	8 (3.4)	< 5 @	5 (2.0)	< 5 @
	55-64 yrs	10 (7.0)	13 (8.9)	6 (3.9)	0 (0.0)	< 5 @	0 (0.0)
	≥65 yrs	12 (9.1)	15 (11.2)	8 (5.9)	< 5 @	< 5 @	< 5 @

Less than five cases not reported; @ indicates numerator too small for rate calculation

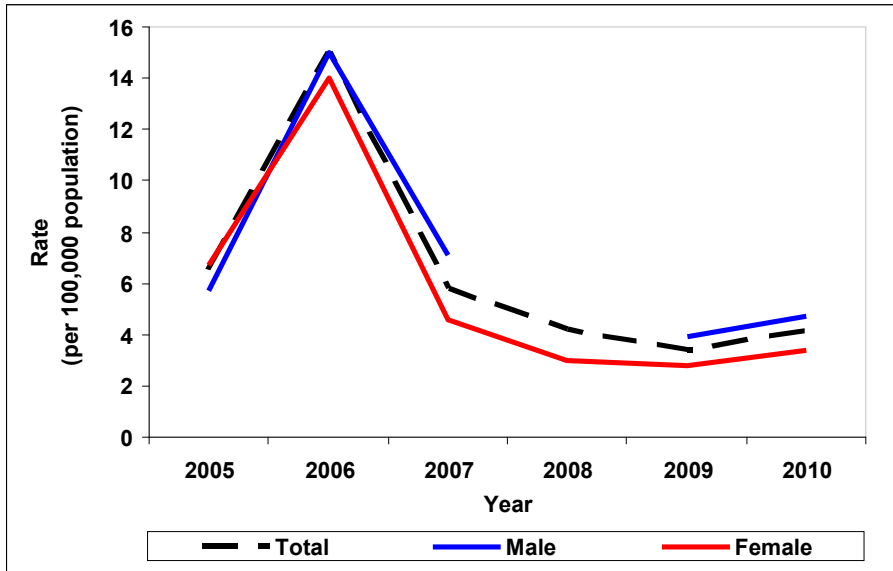
Rates based on less than 20 cases are considered unstable and should be interpreted with caution.

Data source : Tarrant County Public Health

Acute Hepatitis B

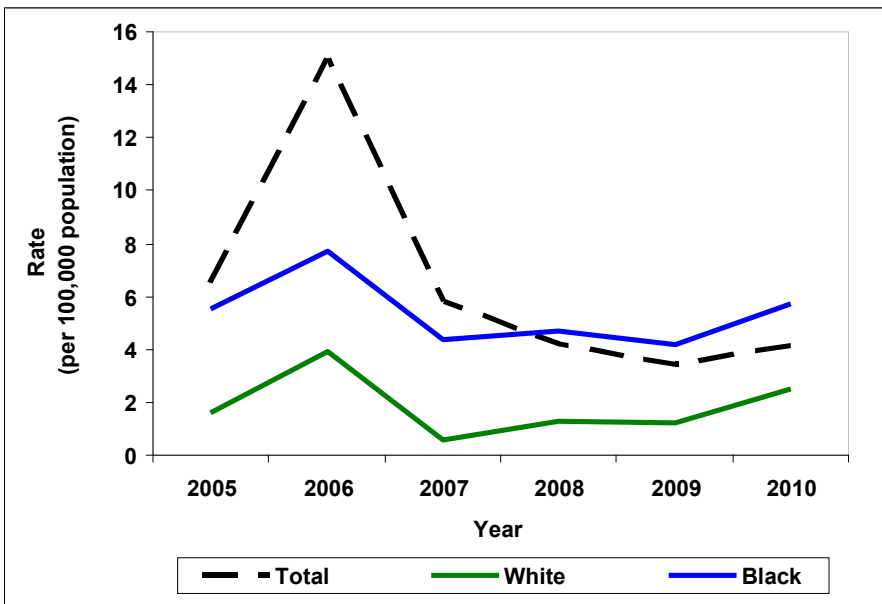
Hepatitis B is an infectious inflammatory illness of the liver caused by the hepatitis B virus (HBV). The virus is transmitted by exposure to infected blood and other body fluids. It can also be transmitted across the placenta from the mother to the fetus.

Figure 4. Acute Hepatitis B by gender, Tarrant County, 2005-2010



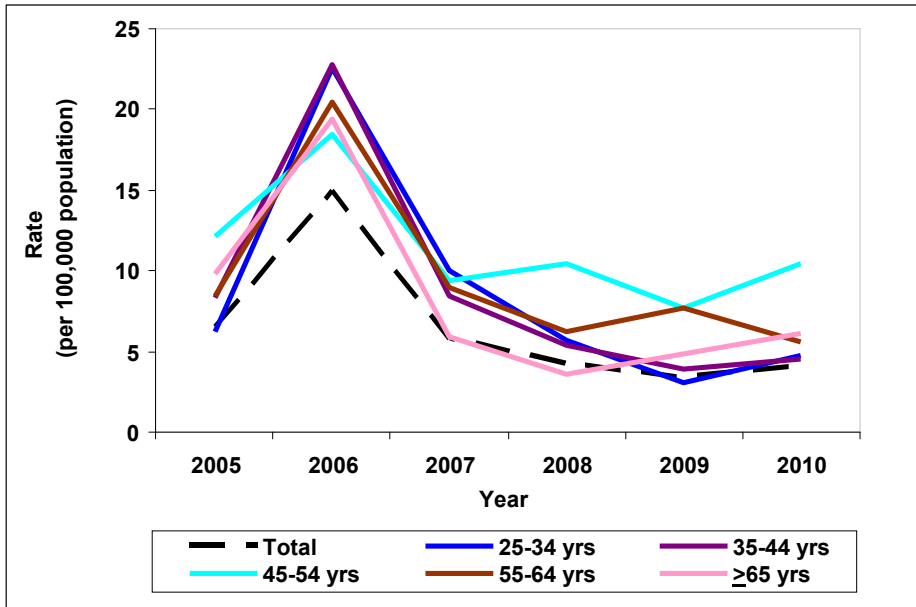
Note: The numerator was too small for rate calculation for Male (2008)
 Data source: Tarrant County Public Health

Figure 5. Acute Hepatitis B by race/ethnicity, Tarrant County, 2005-2010



Note: The numerator was too small for rate calculation for Hispanic and Other race/ethnicity
 Data source: Tarrant County Public Health

Figure 6. Acute Hepatitis B by age group (in years), Tarrant County, 2005-2010



Note: The numerator was too small for rate calculation for other age groups
 Data source: Tarrant County Public Health

Figure 7. Acute Hepatitis B by sub-county region, Tarrant County, 2005-2010

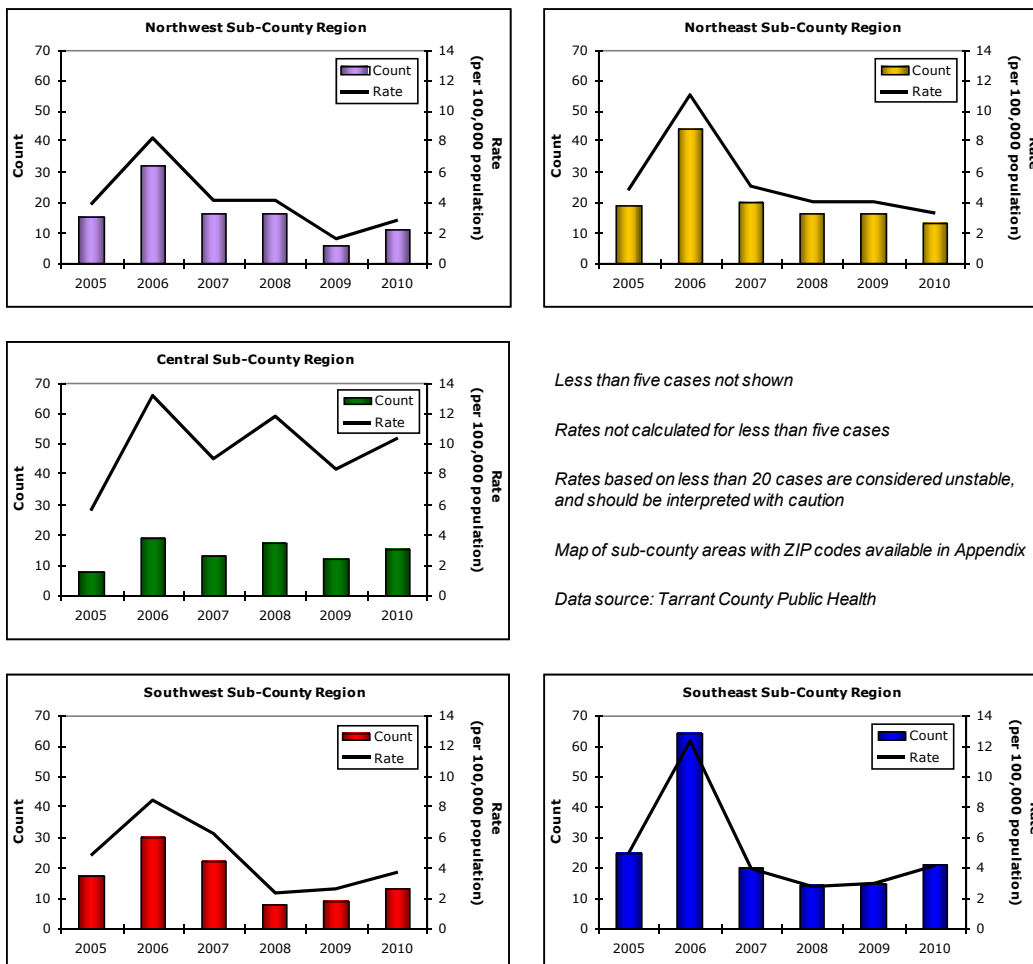


Table 4. Acute Hepatitis B, Tarrant County, 2005-2010

	2005 Total (Rate)	2006 Total (Rate)	2007 Total (Rate)	2008 Total (Rate)	2009 Total (Rate)	2010 Total (Rate)	
Total	105 (6.5)	246 (15.0)	98 (5.8)	73 (4.2)	60 (3.4)	74 (4.1)	
Gender	Male	46 (5.7)	122 (15.0)	59 (7.1)	47 (5.4)	35 (3.9)	43 (4.7)
	Female	55 (6.7)	115 (14.0)	39 (4.6)	26 (3.0)	25 (2.8)	31 (3.4)
Race / Ethnicity	White	15 (1.6)	35 (3.9)	5 (0.6)	12 (1.3)	11 (1.2)	22 (2.5)
	Black	12 (5.5)	17 (7.7)	10 (4.4)	11 (4.7)	10 (4.2)	14 (5.7)
	Hispanic	< 5 @	11 (2.6)	9 (2.0)	< 5 @	5 (1.0)	< 5 @
	Other	< 5 @	31 (32.6)	5 (4.8)	< 5 @	< 5 @	6 (4.6)
Age Groups	0-4 yrs	< 5 @	< 5 @	0 (0.0)	0 (0.0)	< 5 @	< 5 @
	5-9 yrs	< 5 @	< 5 @	0 (0.0)	< 5 @	0 (0.0)	0 (0.0)
	10-14 yrs	0 (0.0)	0 (0.0)	0 (0.0)	0 (0.0)	0 (0.0)	< 5 @
	15-19 yrs	< 5 @	6 (4.9)	0 (0.0)	0 (0.0)	< 5 @	0 (0.0)
	20-24 yrs	7 (6.1)	16 (13.9)	5 (4.2)	< 5 @	< 5 @	0 (0.0)
	25-34 yrs	16 (6.2)	59 (22.6)	27 (10.0)	16 (5.7)	9 (3.1)	14 (4.7)
	35-44 yrs	21 (8.3)	58 (22.8)	22 (8.4)	15 (5.4)	11 (3.9)	13 (4.5)
	45-54 yrs	27 (12.1)	42 (18.5)	22 (9.4)	25 (10.4)	19 (7.7)	26 (10.4)
	55-64 yrs	12 (8.4)	30 (20.5)	14 (9.0)	10 (6.2)	8 (4.7)	10 (5.6)
	≥65 yrs	13 (9.8)	26 (19.4)	8 (5.9)	5 (3.6)	7 (4.9)	9 (6.1)

Less than five cases not reported; @ indicates numerator too small for rate calculation

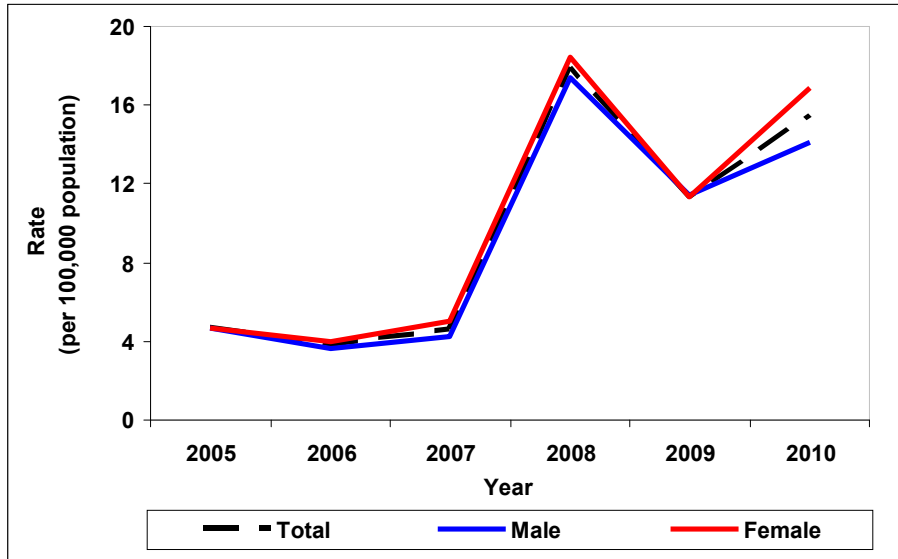
Rates based on less than 20 cases are considered unstable and should be interpreted with caution.

Data source : Tarrant County Public Health

Pertussis

Pertussis also known as “whooping cough” is a highly contagious bacterial disease caused by *Bordetella pertussis*, affecting the respiratory tract. The disease is most common among infants and young children.

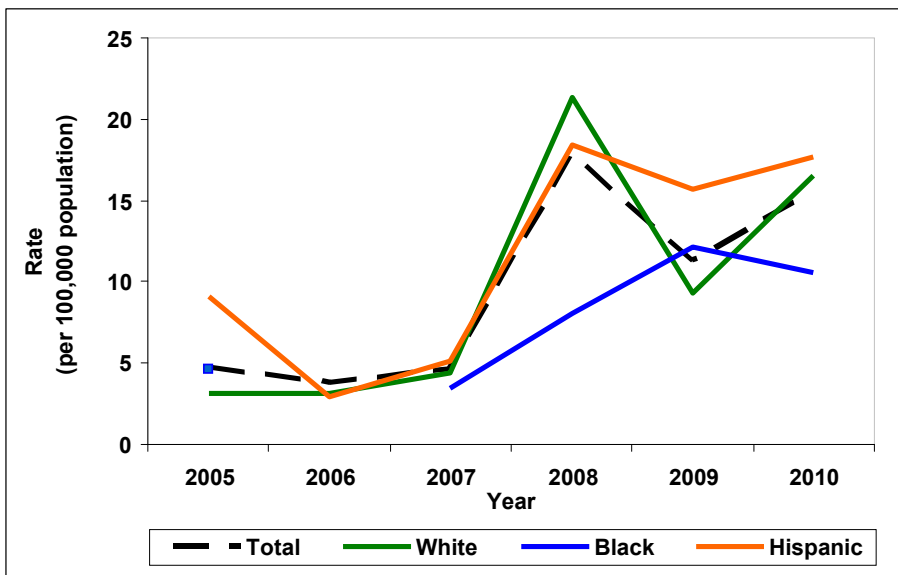
Figure 8. Pertussis by gender, Tarrant County, 2005-2010



The incidence rate of Pertussis increased 289% from 2007 to 2008.

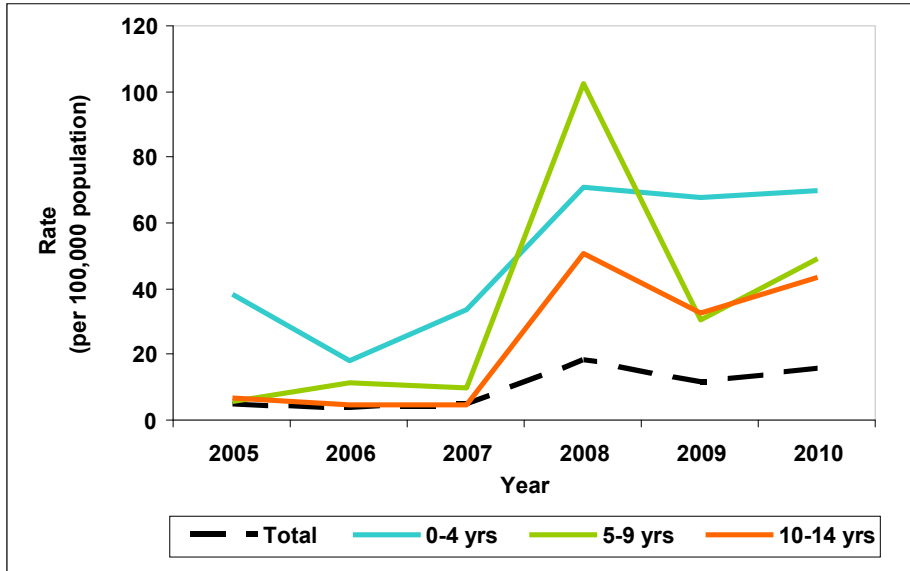
Data source: Tarrant County Public Health

Figure 9. Pertussis by race/ethnicity, Tarrant County, 2005-2010



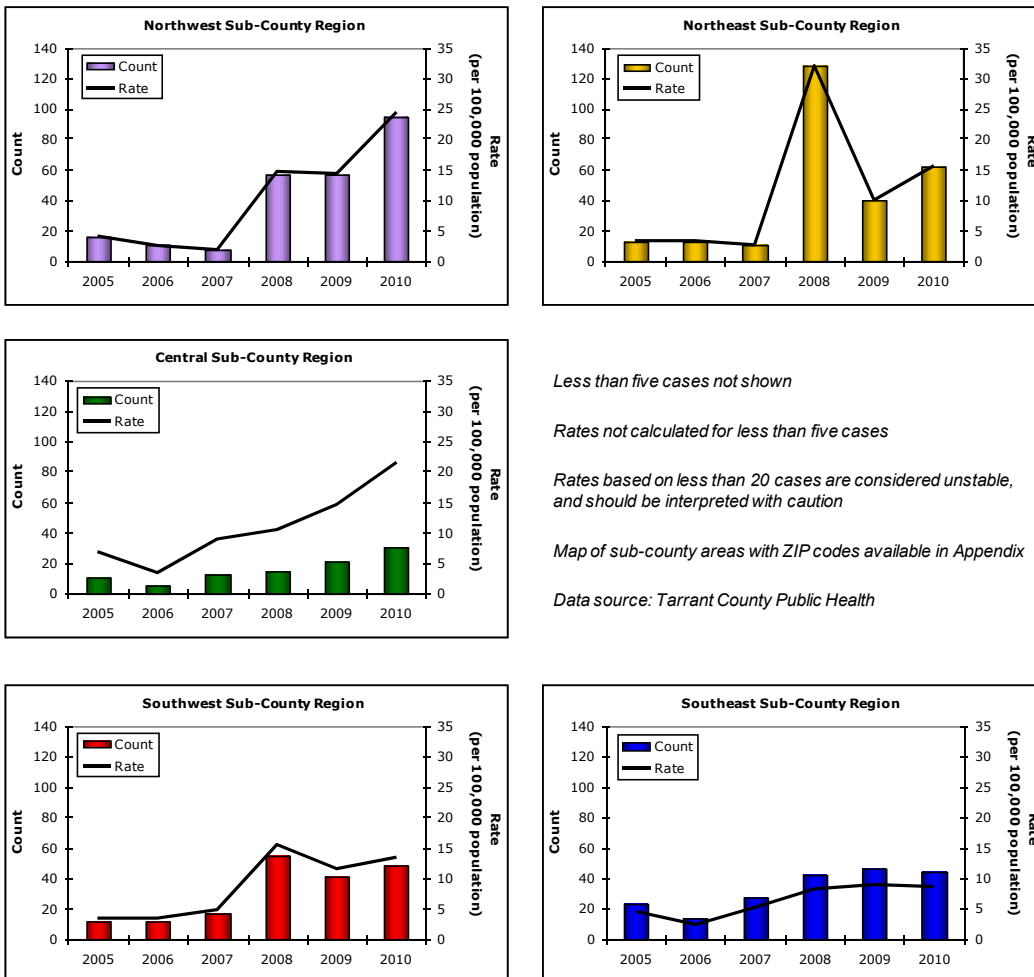
Note: The numerator was too small for rate calculation for Black (2006) and Other race/ethnicity
 Data source: Tarrant County Public Health

Figure 10. Pertussis by age group (in years), Tarrant County, 2005-2010



Note: The numerator was too small for rate calculation for other age groups
 Data source: Tarrant County Public Health

Figure 11. Pertussis by sub-county region, Tarrant County, 2005-2010



Less than five cases not shown
 Rates not calculated for less than five cases
 Rates based on less than 20 cases are considered unstable, and should be interpreted with caution
 Map of sub-county areas with ZIP codes available in Appendix
 Data source: Tarrant County Public Health

Table 5. Pertussis, Tarrant County, 2005-2010

	2005 Total (Rate)	2006 Total (Rate)	2007 Total (Rate)	2008 Total (Rate)	2009 Total (Rate)	2010 Total (Rate)	
Total	76 (4.7)	62 (3.8)	77 (4.6)	312 (17.9)	202 (11.3)	283 (15.5)	
Gender	Male	38 (4.7)	29 (3.6)	35 (4.2)	152 (17.4)	102 (11.4)	130 (14.1)
	Female	38 (4.7)	33 (4.0)	42 (5.0)	159 (18.4)	100 (11.3)	153 (16.9)
Race / Ethnicity	White	28 (3.1)	28 (3.1)	40 (4.4)	192 (21.3)	84 (9.3)	148 (16.5)
	Black	10 (4.6)	< 5 @	8 (3.5)	19 (8.1)	29 (12.1)	26 (10.6)
	Hispanic	36 (9.1)	12 (2.9)	23 (5.1)	90 (18.4)	82 (15.7)	98 (17.7)
	Other	< 5 @	< 5 @	< 5 @	< 5 @	< 5 @	< 5 @
Age Groups	0-4 yrs	51 (38.1)	24 (17.9)	46 (33.7)	99 (70.7)	97 (68.0)	101 (69.6)
	5-9 yrs	7 (5.8)	14 (11.6)	12 (9.6)	130 (102.3)	40 (30.6)	66 (48.9)
	10-14 yrs	8 (6.5)	6 (4.9)	6 (4.9)	62 (50.6)	40 (32.5)	54 (43.4)
	15-19 yrs	< 5 @	< 5 @	5 (4.0)	6 (4.7)	7 (5.4)	10 (7.7)
	20-24 yrs	< 5 @	5 (4.4)	< 5 @	< 5 @	< 5 @	5 (3.8)
	25-34 yrs	< 5 @	< 5 @	< 5 @	< 5 @	7 (2.4)	13 (4.4)
	35-44 yrs	< 5 @	5 (2.0)	< 5 @	6 (2.2)	< 5 @	11 (3.8)
	45-54 yrs	< 5 @	0 (0.0)	< 5 @	< 5 @	< 5 @	6 (2.4)
	55-64 yrs	0 (0.0)	0 (0.0)	< 5 @	< 5 @	0 (0.0)	< 5 @
	≥65 yrs	< 5 @	< 5 @	< 5 @	< 5 @	< 5 @	14 (9.6)

Less than five cases not reported; @ indicates numerator too small for rate calculation

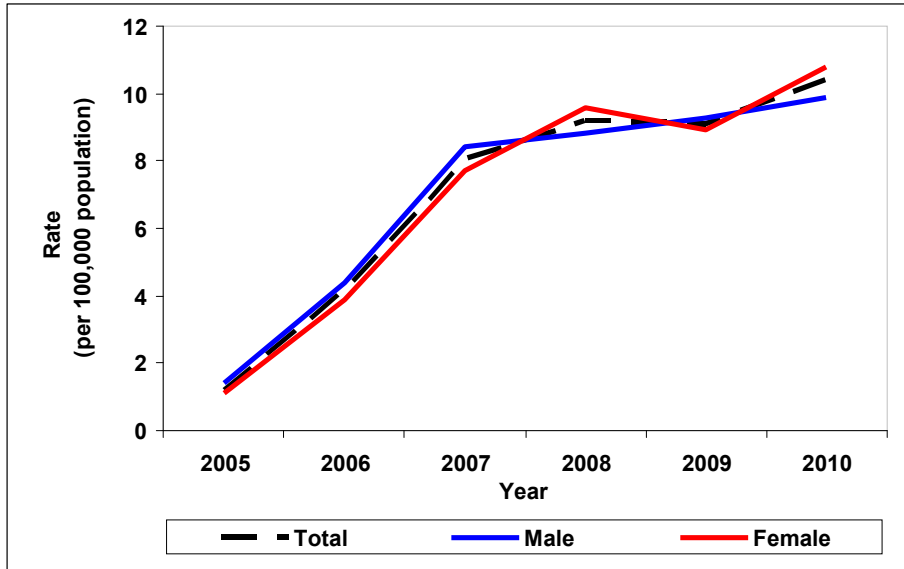
Rates based on less than 20 cases are considered unstable and should be interpreted with caution.

Data source : Tarrant County Public Health

Invasive Pneumococcal Disease

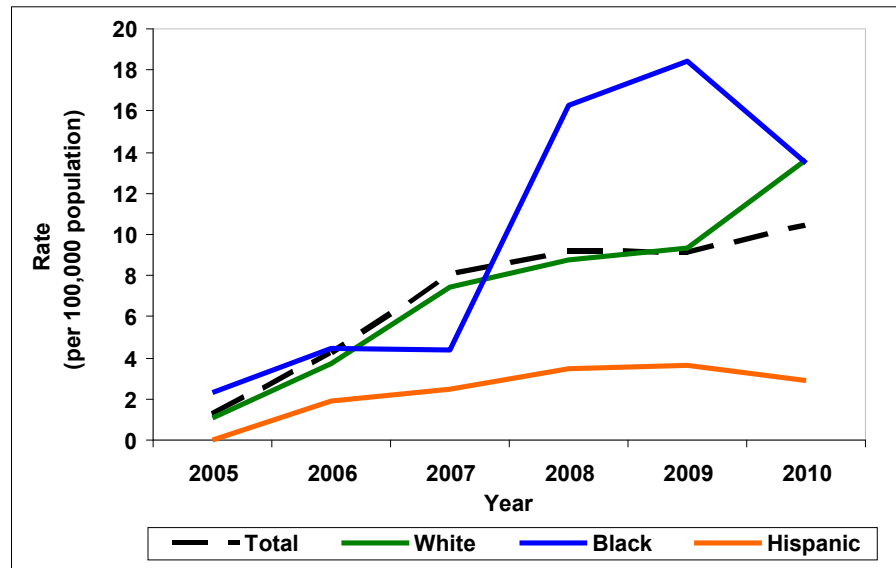
Pneumococcal disease is a bacterial disease caused by the bacterium *Streptococcus pneumoniae*. It is transmitted from person-to-person via respiratory secretions from the nose or mouth. Children under two years of age, the elderly and immune-compromised individuals are at the highest risk for infection.

Figure 12. Invasive Pneumococcal Disease by gender, Tarrant County, 2005-2010



Data source: Tarrant County Public Health

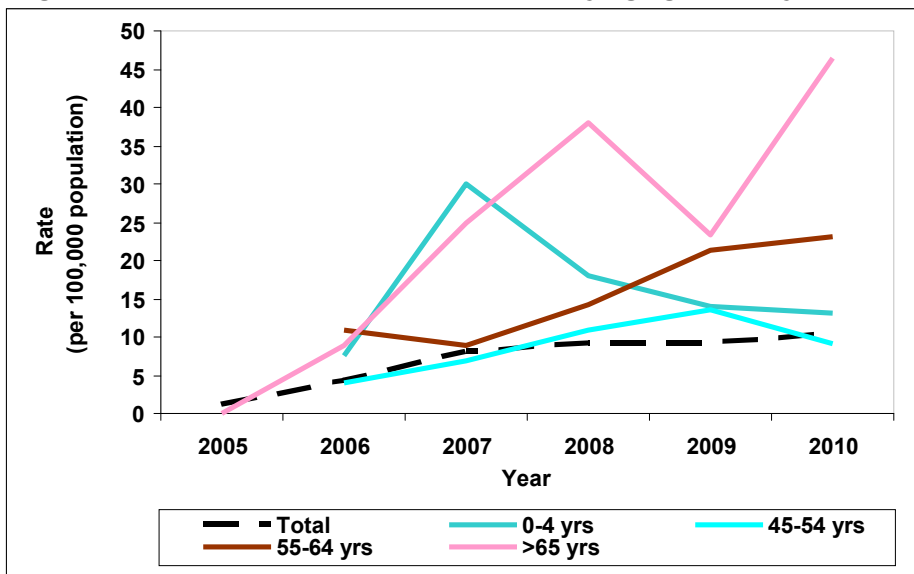
Figure 13. Invasive Pneumococcal Disease by race/ethnicity, Tarrant County, 2005-2010



Note: The numerator was too small for rate calculation for Other race/ethnicity

Data source: Tarrant County Public Health

Figure 14. Invasive Pneumococcal Disease by age group (in years), Tarrant County, 2005-2010



Note: The numerator was too small for rate calculation for other age groups
 Data source: Tarrant County Public Health

Figure 15. Invasive Pneumococcal Disease by sub-county region, Tarrant County, 2005-2010

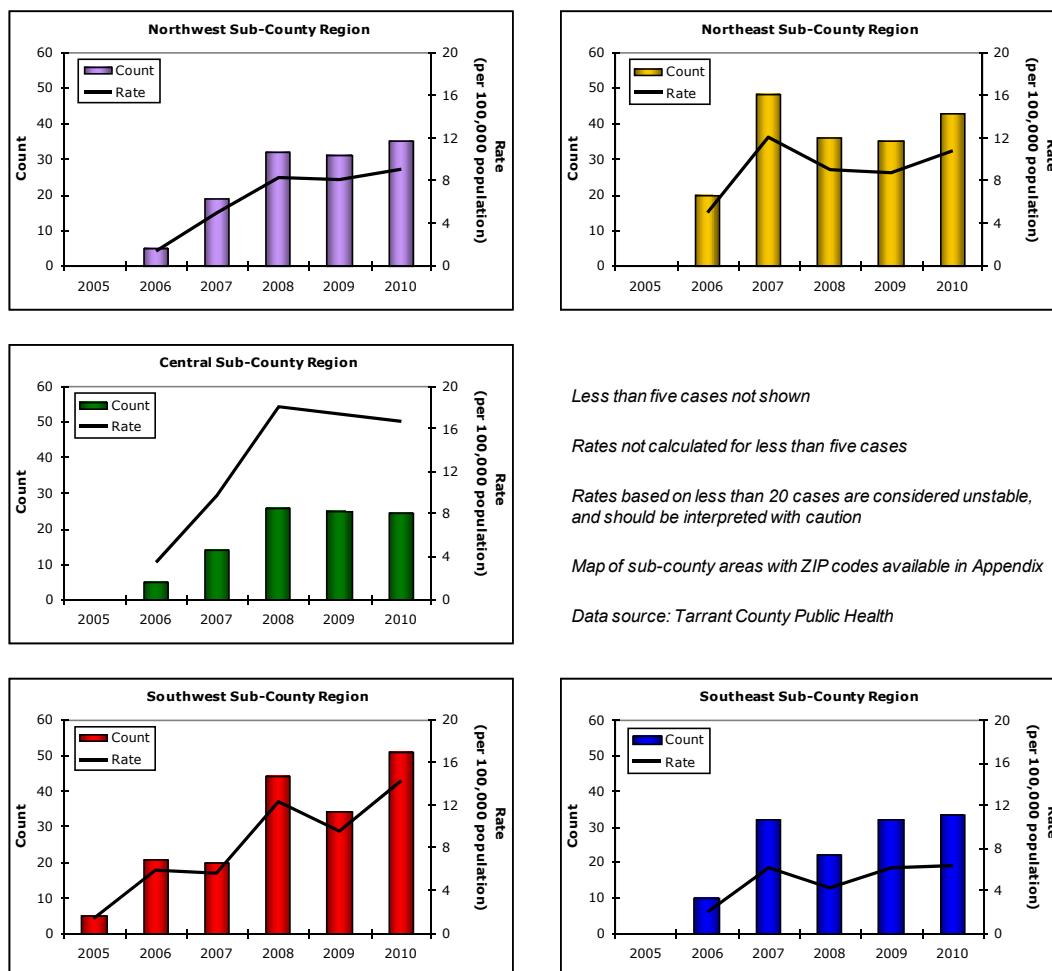


Table 6. Invasive Pneumococcal Disease, Tarrant County, 2005-2010

	2005 Total (Rate)	2006 Total (Rate)	2007 Total (Rate)	2008 Total (Rate)	2009 Total (Rate)	2010 Total (Rate)	
Total	20 (1.2)	68 (4.2)	135 (8.0)	160 (9.2)	162 (9.1)	189 (10.4)	
Gender	Male	11 (1.4)	36 (4.4)	70 (8.4)	77 (8.8)	83 (9.3)	91 (9.9)
	Female	9 (1.1)	32 (3.9)	65 (7.7)	83 (9.6)	79 (8.9)	98 (10.8)
Race / Ethnicity	White	10 (1.1)	33 (3.7)	67 (7.4)	79 (8.8)	84 (9.3)	122 (13.6)
	Black	5 (2.3)	10 (4.5)	10 (4.4)	38 (16.3)	44 (18.4)	33 (13.5)
	Hispanic	< 5 @	8 (1.9)	11 (2.5)	17 (3.5)	19 (3.6)	16 (2.9)
	Other	0 (0.0)	0 (0.0)	< 5 @	< 5 @	< 5 @	< 5 @
Age Groups	0-4 yrs	< 5 @	10 (7.5)	41 (30.1)	25 (17.9)	20 (14.0)	19 (13.1)
	5-9 yrs	< 5 @	11 (9.1)	9 (7.2)	6 (4.7)	8 (6.1)	< 5 @
	10-14 yrs	< 5 @	< 5 @	< 5 @	0 (0.0)	< 5 @	< 5 @
	15-19 yrs	< 5 @	0 (0.0)	< 5 @	< 5 @	0 (0.0)	< 5 @
	20-24 yrs	0 (0.0)	< 5 @	0 (0.0)	< 5 @	< 5 @	< 5 @
	25-34 yrs	0 (0.0)	< 5 @	< 5 @	7 (2.5)	12 (4.1)	16 (5.4)
	35-44 yrs	< 5 @	< 5 @	13 (4.9)	12 (4.3)	15 (5.3)	11 (3.8)
	45-54 yrs	< 5 @	9 (4.0)	16 (6.9)	26 (10.8)	33 (13.5)	23 (9.2)
	55-64 yrs	< 5 @	16 (10.9)	14 (9.0)	23 (14.2)	36 (21.3)	41 (23.2)
	≥65 yrs	< 5 @	12 (9.0)	34 (25.0)	52 (37.9)	33 (23.3)	68 (46.4)

Less than five cases not reported; @ indicates numerator too small for rate calculation

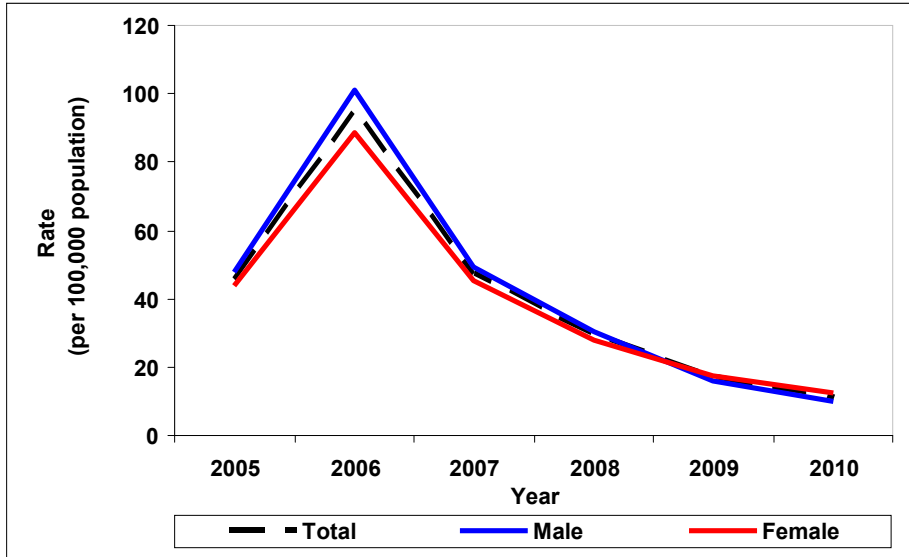
Rates based on less than 20 cases are considered unstable and should be interpreted with caution.

Data source : Tarrant County Public Health

Varicella

Varicella, commonly known as chickenpox, is a highly contagious disease caused by the varicella-zoster virus. It spreads from person-to-person through direct contact, coughing, and sneezing. Symptoms include a blister-like skin rash, itching, tiredness, and fever.

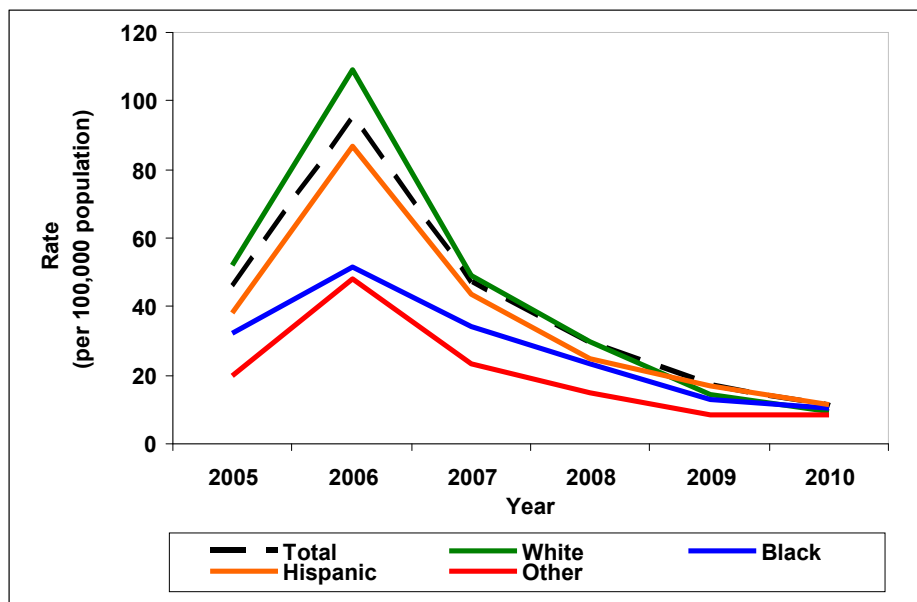
Figure 16. Varicella by gender, Tarrant County, 2005-2010



The incidence of Varicella decreased 88% from 2006 to 2010.

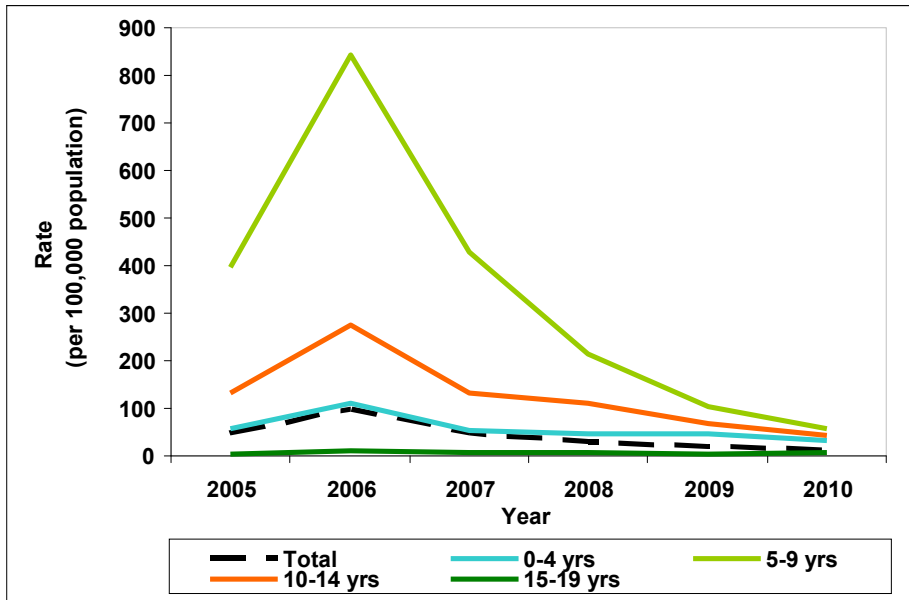
Data source: Tarrant County Public Health

Figure 17. Varicella by race/ethnicity, Tarrant County, 2005-2010



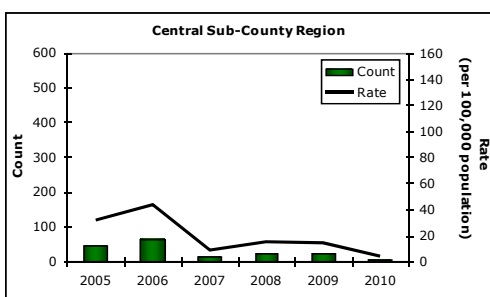
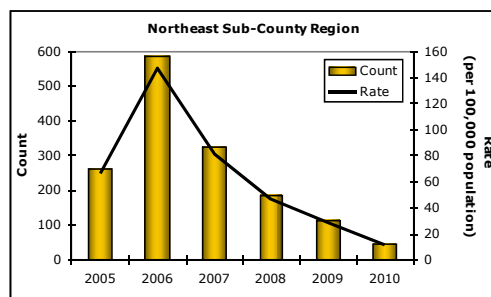
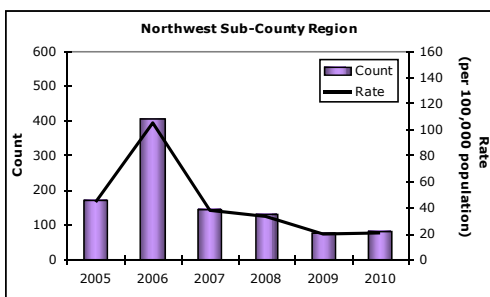
Data source: Tarrant County Public Health

Figure 18. Varicella by age group (in years), Tarrant County, 2005-2010



Note: The numerator was too small for rate calculation for other age groups
 Data source: Tarrant County Public Health

Figure 19. Varicella by sub-county region, Tarrant County, 2005-2010



Less than five cases not shown
 Rates not calculated for less than five cases
 Rates based on less than 20 cases are considered unstable, and should be interpreted with caution
 Map of sub-county areas with ZIP codes available in Appendix
 Data source: Tarrant County Public Health

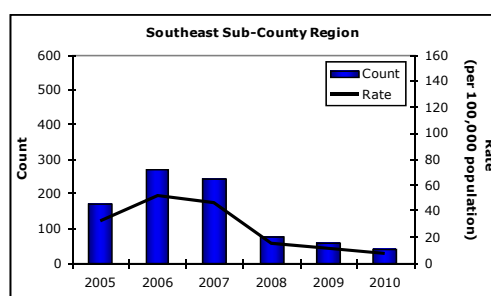
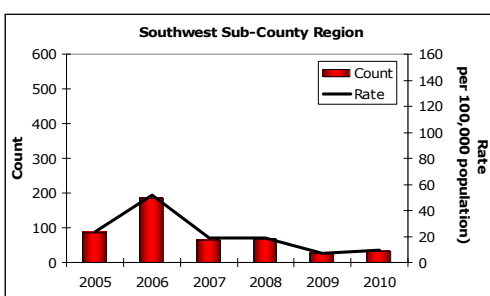


Table 7. Varicella, Tarrant County, 2005-2010

	2005 Total (Rate)	2006 Total (Rate)	2007 Total (Rate)	2008 Total (Rate)	2009 Total (Rate)	2010 Total (Rate)	
Total	744 (45.9)	1,564 (95.6)	796 (47.3)	507 (29.2)	298 (16.7)	202 (11.1)	
Gender	Male	387 (48.0)	825 (101.3)	413 (49.4)	264 (30.3)	144 (16.1)	90 (9.8)
	Female	357 (43.8)	729 (88.7)	383 (45.3)	243 (28.1)	154 (17.4)	112 (12.4)
Race / Ethnicity	White	476 (52.1)	988 (109.3)	444 (49.1)	267 (29.6)	130 (14.5)	83 (9.3)
	Black	70 (32.1)	114 (51.8)	78 (34.3)	55 (23.5)	31 (13.0)	25 (10.2)
	Hispanic	152 (38.2)	361 (86.7)	195 (43.6)	121 (24.8)	88 (16.9)	62 (11.2)
	Other	18 (19.9)	46 (48.3)	24 (23.1)	17 (15.0)	10 (8.2)	11 (8.5)
Age Groups	0-4 yrs	76 (56.7)	147 (109.9)	75 (55.0)	63 (45.0)	65 (45.6)	47 (32.4)
	5-9 yrs	477 (395.0)	1,019 (842.5)	531 (426.8)	274 (215.7)	136 (103.9)	79 (58.5)
	10-14 yrs	161 (131.4)	337 (275.6)	160 (130.6)	137 (111.9)	83 (67.4)	53 (42.6)
	15-19 yrs	6 (5.0)	13 (10.7)	7 (5.7)	11 (8.6)	5 (3.9)	8 (6.2)
	20-24 yrs	< 5 @	< 5 @	< 5 @	6 (4.9)	< 5 @	5 (3.8)
	25-34 yrs	< 5 @	10 (3.8)	8 (3.0)	6 (2.1)	< 5 @	< 5 @
	35-44 yrs	6 (2.4)	12 (4.7)	5 (1.9)	6 (2.2)	< 5 @	< 5 @
	45-54 yrs	0 (0.0)	0 (0.0)	5 (2.1)	< 5 @	0 (0.0)	< 5 @
	55-64 yrs	< 5 @	< 5 @	< 5 @	< 5 @	0 (0.0)	< 5 @
	≥65 yrs	0 (0.0)	< 5 @	< 5 @	< 5 @	< 5 @	0 (0.0)

Less than five cases not reported; @ indicates numerator too small for rate calculation

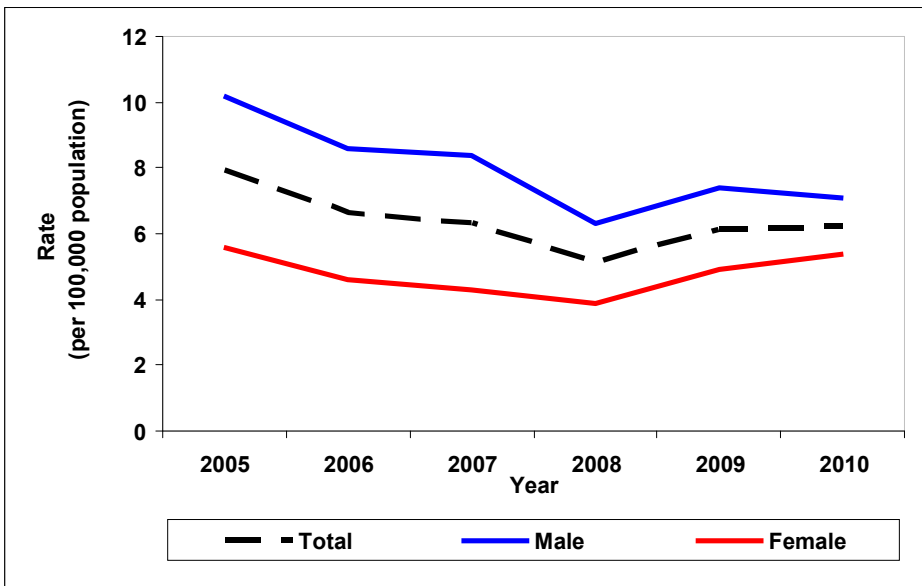
Rates based on less than 20 cases are considered unstable and should be interpreted with caution.

Data source : Tarrant County Public Health

TUBERCULOSIS

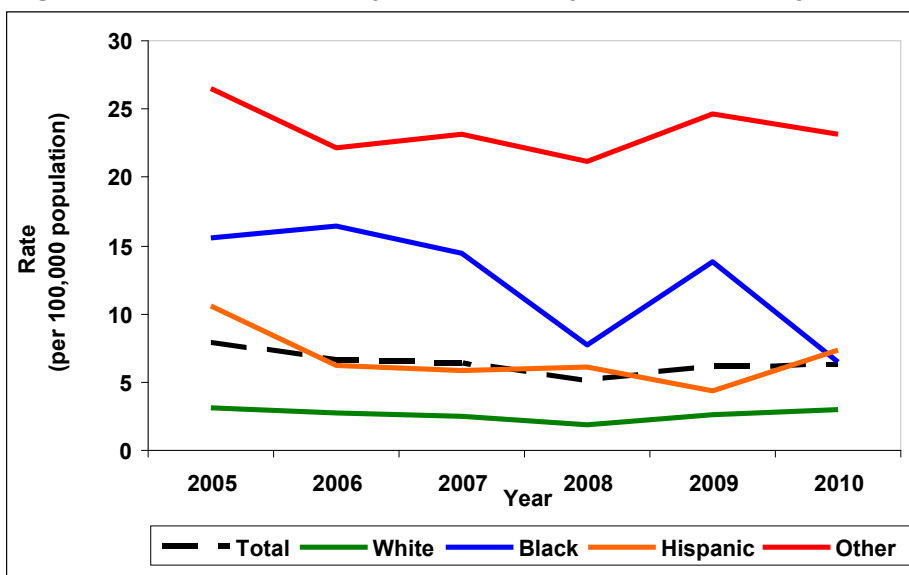
Tuberculosis (TB) is an infectious disease of the respiratory system caused by *Mycobacterium tuberculosis*. It can be transmitted from person-to-person by breathing in air droplets from a cough or sneeze of an infected person. The emergence of multiple drug resistance TB (MDR-TB) defined as resistance to at least isoniazid and rifampin has slowed down the decline in incidence of TB.

Figure 20. Tuberculosis by gender, Tarrant County, 2005-2010



Data source: Tarrant County Public Health

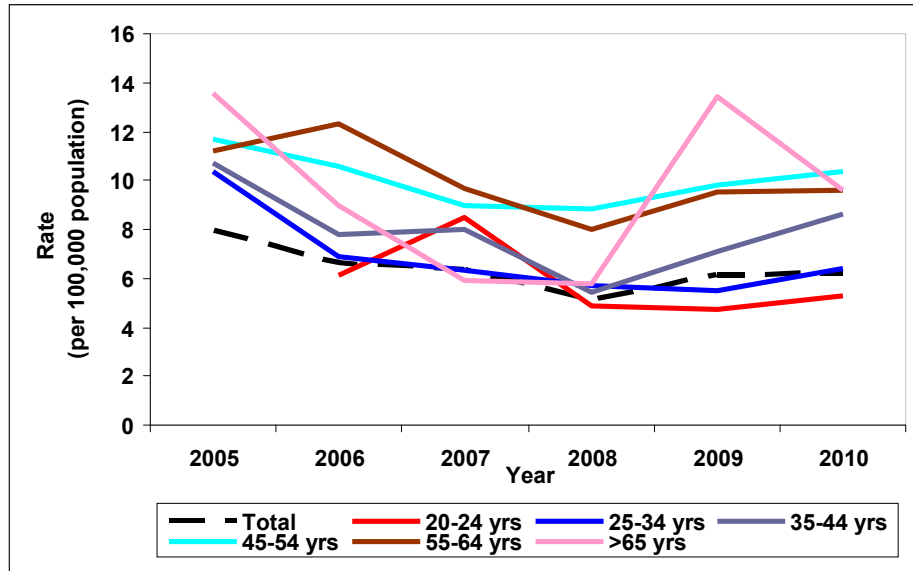
Figure 21. Tuberculosis by race/ethnicity, Tarrant County, 2005-2010



Data source: Tarrant County Public Health

TB incidence was highest among the Other race/ethnicity group.

Figure 22. Tuberculosis by age group (in years), Tarrant County, 2005-2010



Note: The numerator was too small for rate calculation for other age groups
 Data source: Tarrant County Public Health

Figure 23. Tuberculosis by sub-county region, Tarrant County, 2005-2010

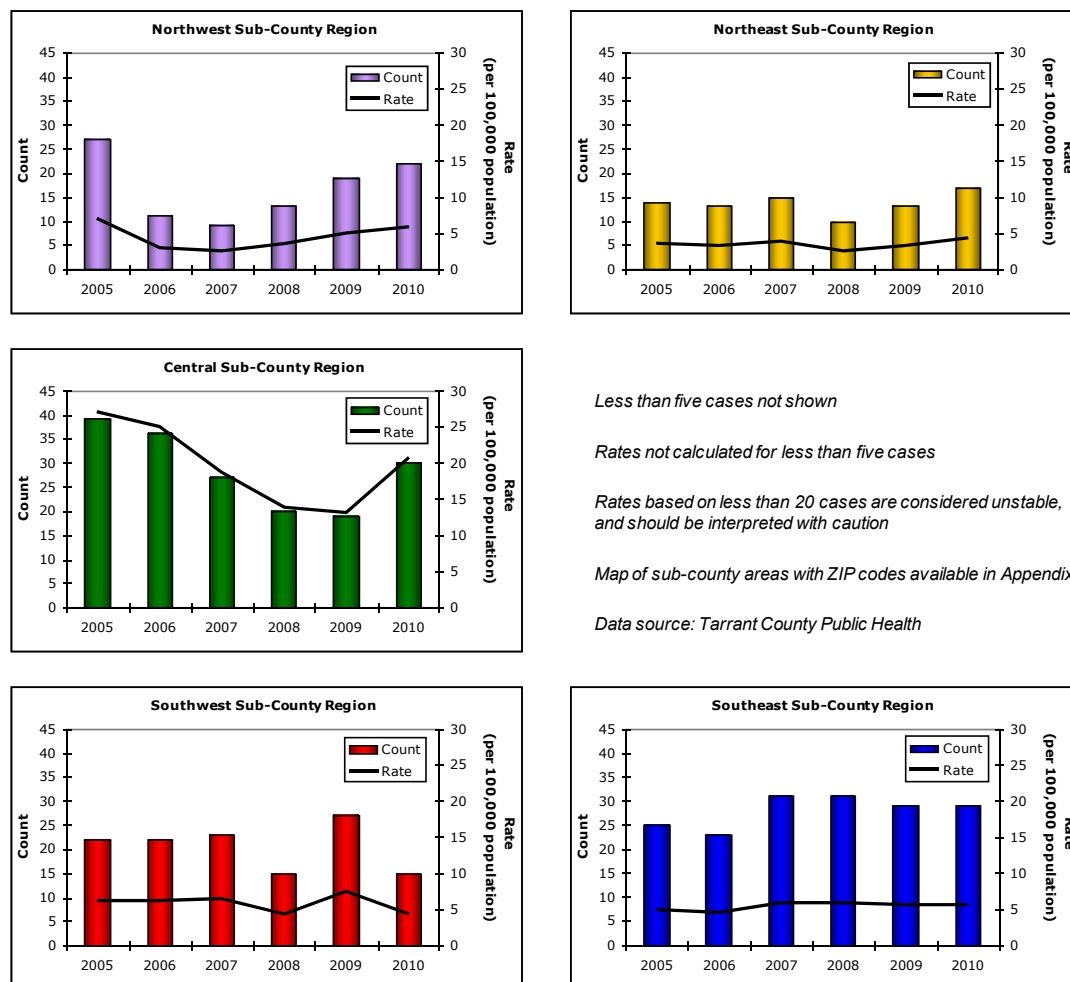


Table 8. Tuberculosis, Tarrant County, 2005-2010

	2005 Total (Rate)	2006 Total (Rate)	2007 Total (Rate)	2008 Total (Rate)	2009 Total (Rate)	2010 Total (Rate)	
Total	128 (7.9)	108 (6.6)	106 (6.3)	89 (5.1)	109 (6.1)	114 (6.2)	
Gender	Male	82 (10.2)	70 (8.6)	70 (8.4)	55 (6.3)	66 (7.4)	65 (7.1)
	Female	46 (5.6)	38 (4.6)	36 (4.3)	34 (3.9)	43 (4.9)	49 (5.4)
Race / Ethnicity	White	28 (3.1)	25 (2.8)	23 (2.5)	17 (1.9)	23 (2.6)	27 (3.0)
	Black	34 (15.6)	36 (16.4)	33 (14.5)	18 (7.7)	33 (13.8)	16 (6.5)
	Hispanic	42 (10.6)	26 (6.2)	26 (5.8)	30 (6.1)	23 (4.4)	41 (7.4)
	Other	24 (26.5)	21 (22.1)	24 (23.1)	24 (21.1)	30 (24.7)	30 (23.1)
Age Groups	0-4 yrs	6 (4.5)	< 5 @	< 5 @	< 5 @	5 (3.5)	< 5 @
	5-9 yrs	< 5 @	0 (0.0)	0 (0.0)	< 5 @	< 5 @	< 5 @
	10-14 yrs	0 (0.0)	< 5 @	0 (0.0)	0 (0.0)	0 (0.0)	< 5 @
	15-19 yrs	< 5 @	5 (4.1)	7 (5.7)	5 (3.9)	< 5 @	< 5 @
	20-24 yrs	< 5 @	7 (6.1)	10 (8.5)	6 (4.9)	6 (4.7)	7 (5.3)
	25-34 yrs	27 (10.4)	18 (6.9)	17 (6.3)	16 (5.7)	16 (5.5)	19 (6.4)
	35-44 yrs	27 (10.7)	20 (7.8)	21 (8.0)	15 (5.4)	20 (7.1)	25 (8.6)
	45-54 yrs	26 (11.7)	24 (10.6)	21 (9.0)	21 (8.8)	24 (9.8)	26 (10.4)
	55-64 yrs	16 (11.2)	18 (12.3)	15 (9.7)	13 (8.0)	16 (9.5)	17 (9.6)
	≥65 yrs	18 (13.6)	12 (9.0)	8 (5.9)	8 (5.8)	19 (13.4)	14 (9.6)

Less than five cases not reported; @ indicates numerator too small for rate calculation

Rates based on less than 20 cases are considered unstable and should be interpreted with caution.

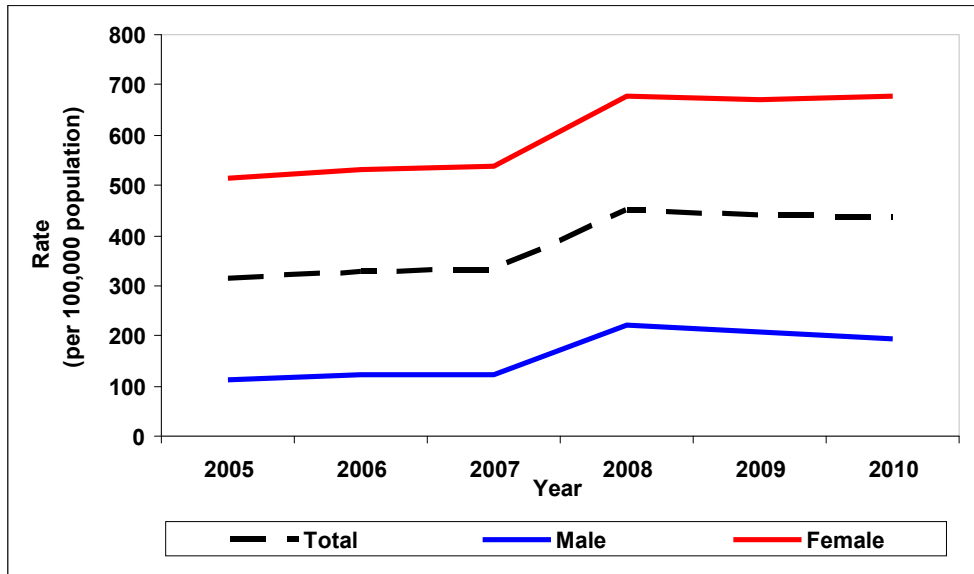
Data source : Tarrant County Public Health

SEXUALLY TRANSMITTED DISEASES

Chlamydia

Chlamydia is a bacterial infection caused by *Chlamydia trachomatis*. It is the most frequently reported communicable disease in Tarrant County. It can be transmitted during vaginal, anal, or oral sex. It can also be transmitted by an infected mother to her baby during vaginal childbirth.

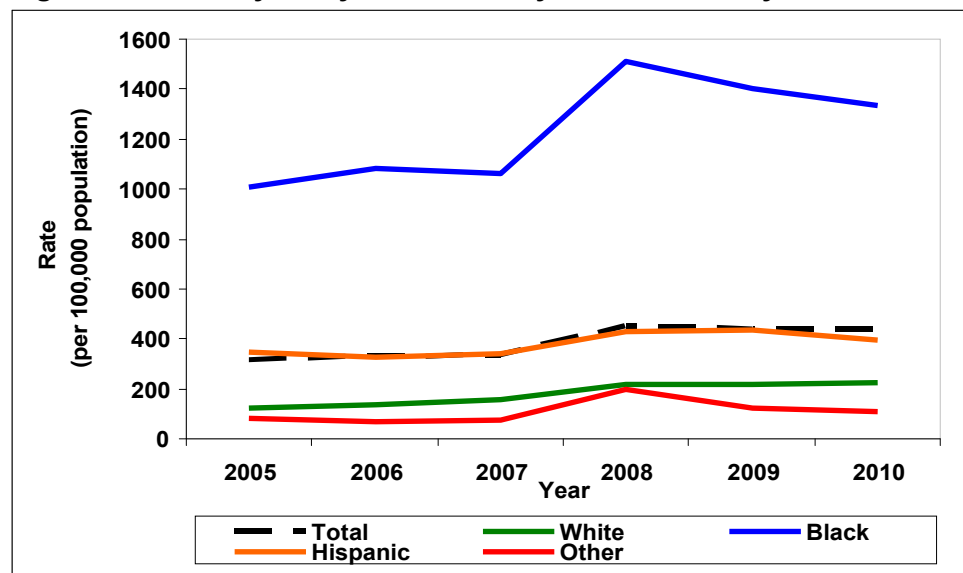
Figure 24. Chlamydia by gender, Tarrant County, 2005-2010



Chlamydia is the most frequently reported communicable disease in Tarrant County.

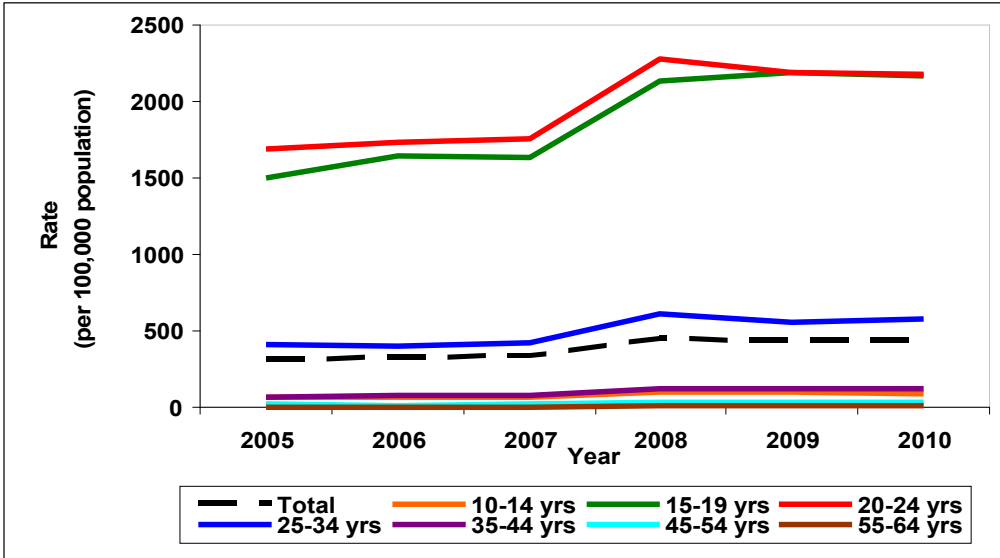
Data source: Tarrant County Public Health

Figure 25. Chlamydia by race/ethnicity, Tarrant County, 2005-2010



Data source: Tarrant County Public Health

Figure 26. Chlamydia by age group (in years), Tarrant County, 2005-2010



Note: The numerator was too small for rate calculation for other age groups
 Data source: Tarrant County Public Health

Figure 27. Chlamydia by sub-county region, Tarrant County, 2005-2010

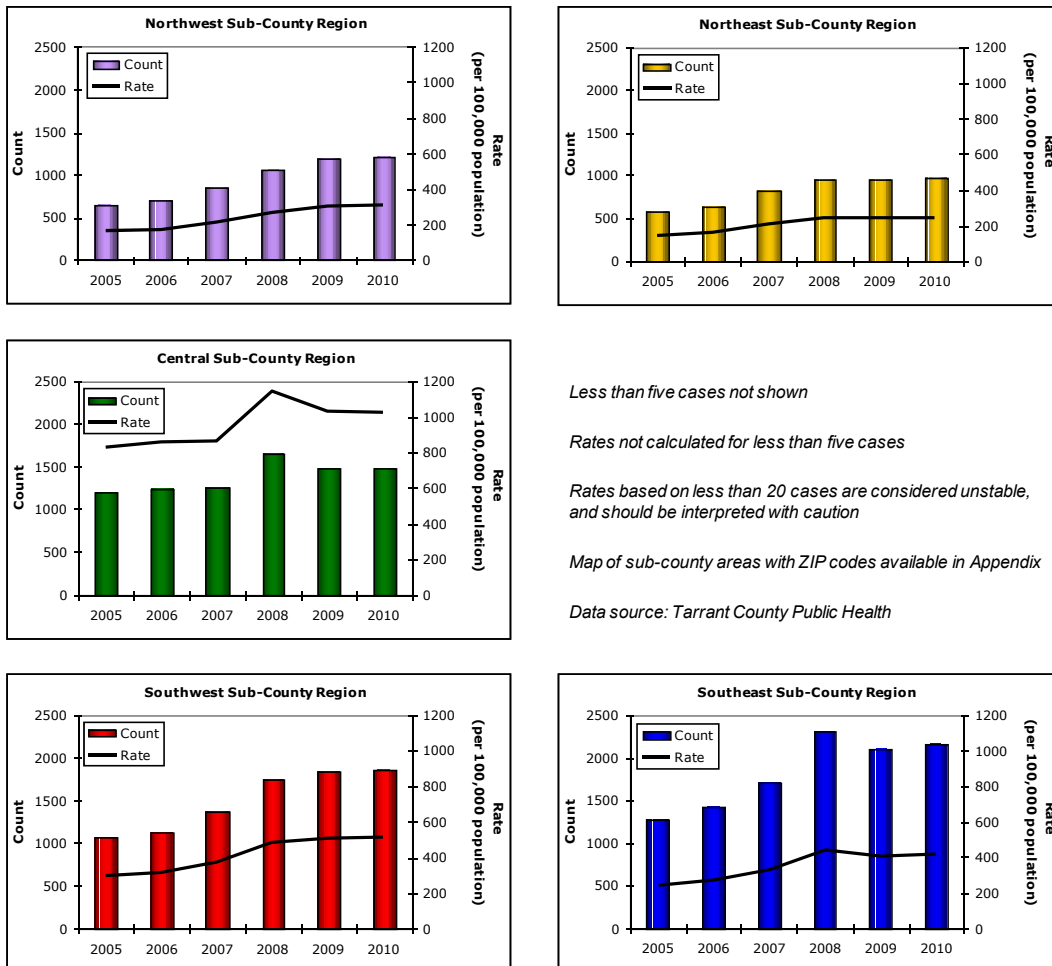


Table 9. Chlamydia, Tarrant County, 2005-2010

	2005 Total (Rate)	2006 Total (Rate)	2007 Total (Rate)	2008 Total (Rate)	2009 Total (Rate)	2010 Total (Rate)	
Total	5,097 (314.4)	5,345 (326.7)	5,577 (331.6)	7,798 (448.6)	7,795 (437.7)	7,945 (435.2)	
Gender	Male	913 (113.3)	985 (121.0)	1,023 (122.3)	1,935 (221.8)	1,847 (206.3)	1,792 (195.0)
	Female	4,184 (513.2)	4,359 (530.6)	4,554 (538.8)	5,862 (677.0)	5,948 (671.5)	6,153 (678.7)
Race / Ethnicity	White	1,110 (121.4)	1,224 (135.4)	1,410 (156.0)	1,959 (217.1)	1,965 (218.5)	2,028 (226.4)
	Black	2,197 (1,006.1)	2,378 (1,080.2)	2,419 (1,063.3)	3,526 (1,509.6)	3,349 (1,399.3)	3,277 (1,336.7)
	Hispanic	1,383 (347.7)	1,374 (329.9)	1,531 (342.5)	2,084 (426.7)	2,272 (436.3)	2,186 (393.9)
	Other	72 (79.5)	67 (70.4)	81 (77.9)	228 (200.5)	145 (119.4)	144 (111.0)
Age Groups	0-4 yrs	5 (3.7)	< 5 @	6 (4.4)	10 (7.1)	< 5 @	< 5 @
	5-9 yrs	< 5 @	6 (5.0)	7 (5.6)	0 (0.0)	< 5 @	< 5 @
	10-14 yrs	81 (66.1)	82 (67.1)	77 (62.9)	119 (97.2)	119 (96.6)	107 (86.1)
	15-19 yrs	1,799 (1,502.8)	1,989 (1,640.0)	2,023 (1,634.4)	2,719 (2,135.5)	2,826 (2,188.8)	2,811 (2,161.6)
	20-24 yrs	1,927 (1,685.8)	1,986 (1,730.6)	2,075 (1,756.0)	2,804 (2,275.6)	2,776 (2,188.4)	2,853 (2,175.9)
	25-34 yrs	1,051 (406.5)	1,037 (396.9)	1,131 (420.0)	1,731 (612.1)	1,615 (556.5)	1,726 (580.7)
	35-44 yrs	175 (69.2)	187 (73.4)	209 (79.5)	331 (119.9)	346 (122.8)	355 (122.7)
	45-54 yrs	45 (20.2)	36 (15.9)	42 (18.0)	67 (27.9)	86 (35.1)	70 (28.1)
	55-64 yrs	6 (4.2)	8 (5.5)	5 (3.2)	10 (6.2)	22 (13.0)	16 (9.0)
	≥65 yrs	< 5 @	< 5 @	0 (0.0)	< 5 @	0 (0.0)	< 5 @

Less than five cases not reported; @ indicates numerator too small for rate calculation

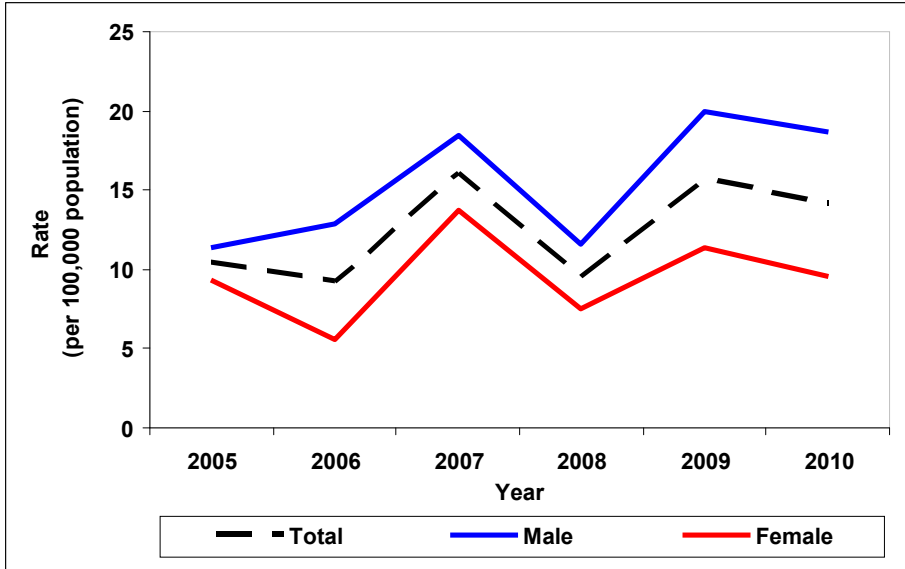
Rates based on less than 20 cases are considered unstable and should be interpreted with caution.

Data source : Tarrant County Public Health

Early Syphilis

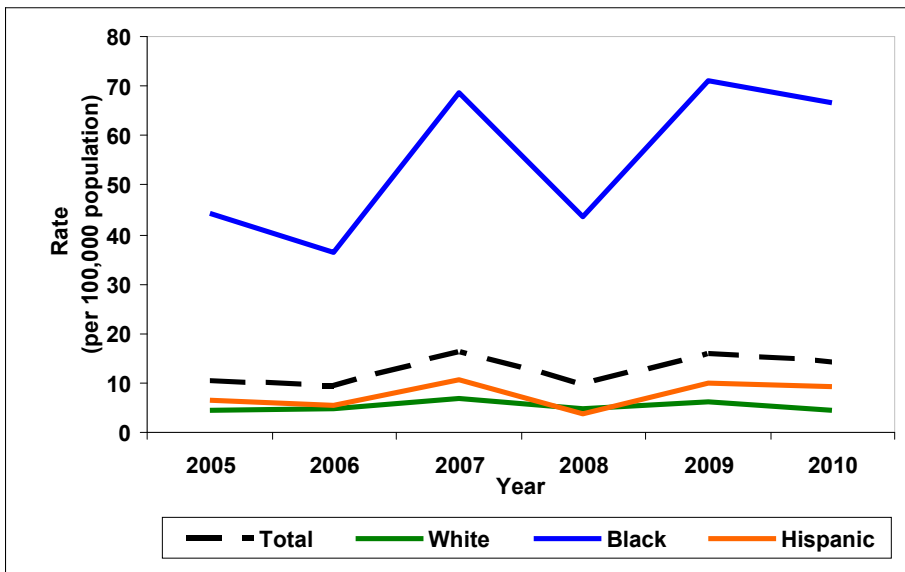
Syphilis is a sexually transmitted disease caused by the bacterium *Treponema pallidum*. Early syphilis includes primary, secondary, and early latent cases. Transmission of the organism can occur through direct contact with a syphilis sore during vaginal, anal, or oral sex and from pregnant mother to her baby.

Figure 28. Early Syphilis by gender, Tarrant County, 2005-2010



Data source: Tarrant County Public Health

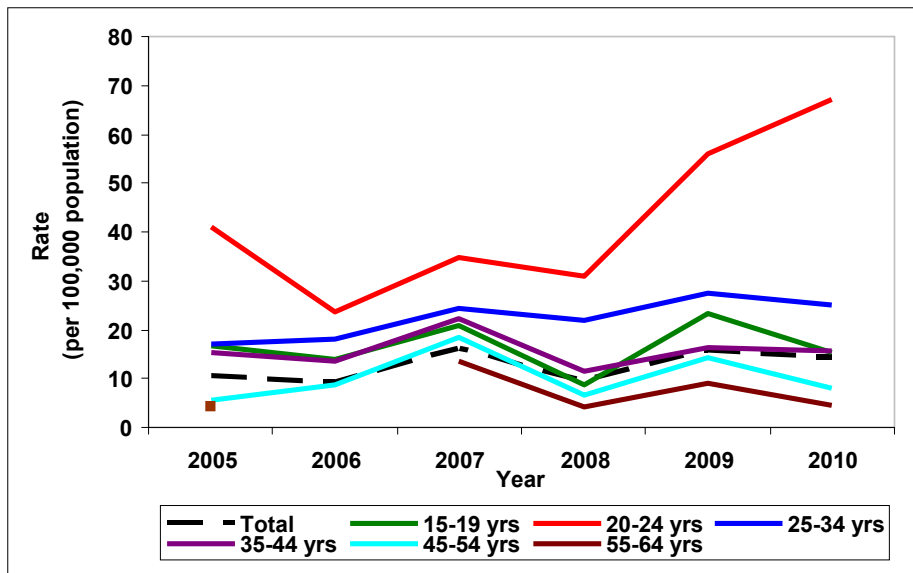
Figure 29. Early Syphilis by race/ethnicity, Tarrant County, 2005-2010



Note: The numerator was too small for rate calculation for Other race/ethnicity
 Data source: Tarrant County Public Health

Early Syphilis rates were highest among Blacks each year from 2005 to 2010

Figure 30. Early Syphilis by age group (in years), Tarrant County, 2005-2010



Note: The numerator was too small for rate calculation for other age groups
 Data source: Tarrant County Public Health

Figure 31. Early Syphilis by sub-county region, Tarrant County, 2005-2010

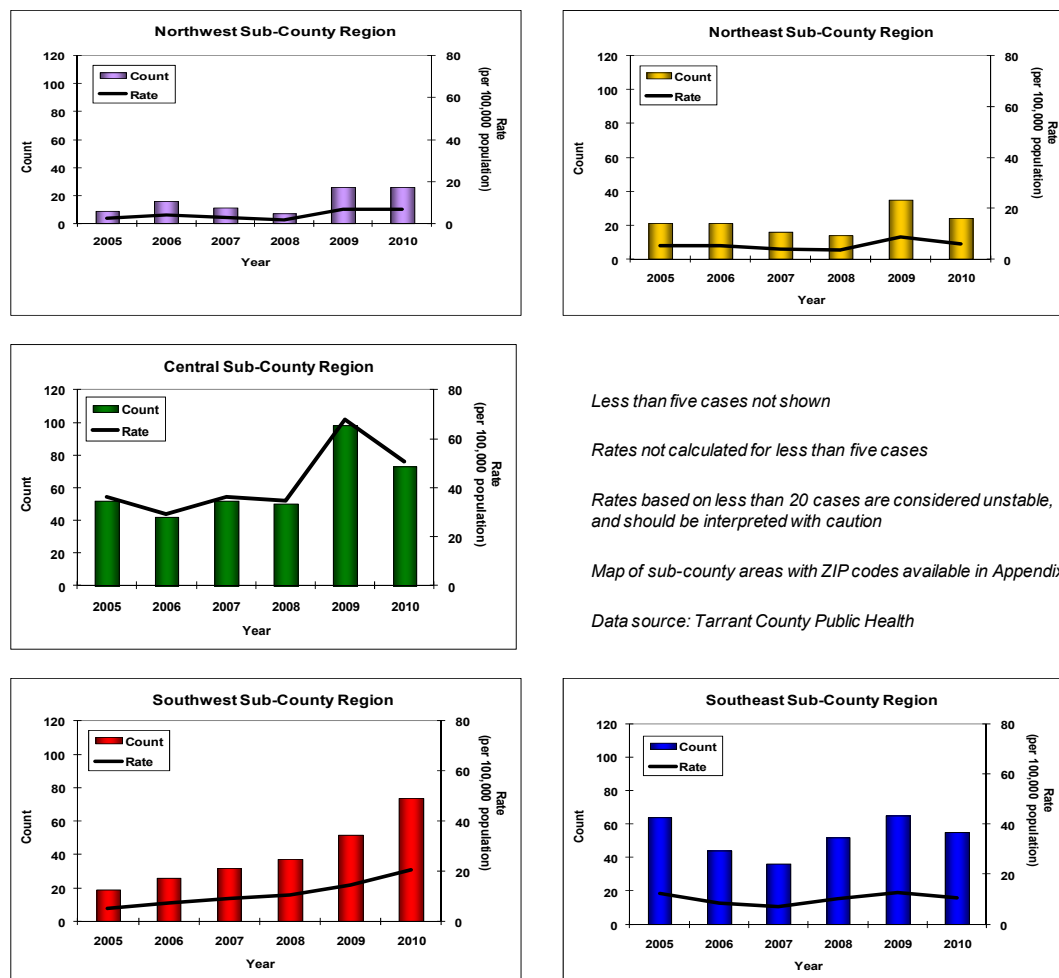


Table 10. Early Syphilis, Tarrant County, 2005-2010

	2005 Total (Rate)	2006 Total (Rate)	2007 Total (Rate)	2008 Total (Rate)	2009 Total (Rate)	2010 Total (Rate)	
Total	168 (10.4)	151 (9.2)	271 (16.1)	166 (9.5)	280 (15.7)	259 (14.2)	
Gender	Male	92 (11.4)	105 (12.9)	155 (18.5)	101 (11.6)	179 (20.0)	172 (18.7)
	Female	76 (9.3)	46 (5.6)	116 (13.7)	65 (7.5)	101 (11.4)	87 (9.6)
Race / Ethnicity	White	42 (4.6)	43 (4.8)	61 (6.8)	43 (4.8)	55 (6.1)	39 (4.4)
	Black	97 (44.4)	80 (36.3)	156 (68.6)	102 (43.7)	170 (71.0)	163 (66.5)
	Hispanic	26 (6.5)	23 (5.5)	48 (10.7)	19 (3.9)	52 (10.0)	51 (9.2)
	Other	< 5 @	< 5 @	5 (4.8)	< 5 @	< 5 @	6 (4.6)
Age Groups	0-4 yrs	0 (0.0)	0 (0.0)	8 (5.9)	0 (0.0)	0 (0.0)	0 (0.0)
	5-9 yrs	0 (0.0)	0 (0.0)	0 (0.0)	0 (0.0)	0 (0.0)	0 (0.0)
	10-14 yrs	0 (0.0)	0 (0.0)	0 (0.0)	0 (0.0)	- (0.0)	0 (0.0)
	15-19 yrs	20 (16.7)	17 (14.0)	26 (21.0)	11 (8.6)	30 (23.2)	20 (15.4)
	20-24 yrs	47 (41.1)	27 (23.5)	41 (34.7)	38 (30.8)	71 (56.0)	88 (67.1)
	25-34 yrs	44 (17.0)	47 (18.0)	66 (24.5)	62 (21.9)	80 (27.6)	75 (25.2)
	35-44 yrs	39 (15.4)	35 (13.7)	59 (22.4)	32 (11.6)	46 (16.3)	45 (15.5)
	45-54 yrs	12 (5.4)	20 (8.8)	43 (18.5)	16 (6.7)	35 (14.3)	20 (8.0)
	55-64 yrs	6 (4.2)	< 5 @	21 (13.5)	7 (4.3)	15 (8.9)	8 (4.5)
	≥65 yrs	0 (0.0)	< 5 @	6 (4.4)	0 (0.0)	< 5 @	< 5 @

Less than five cases not reported; @ indicates numerator too small for rate calculation

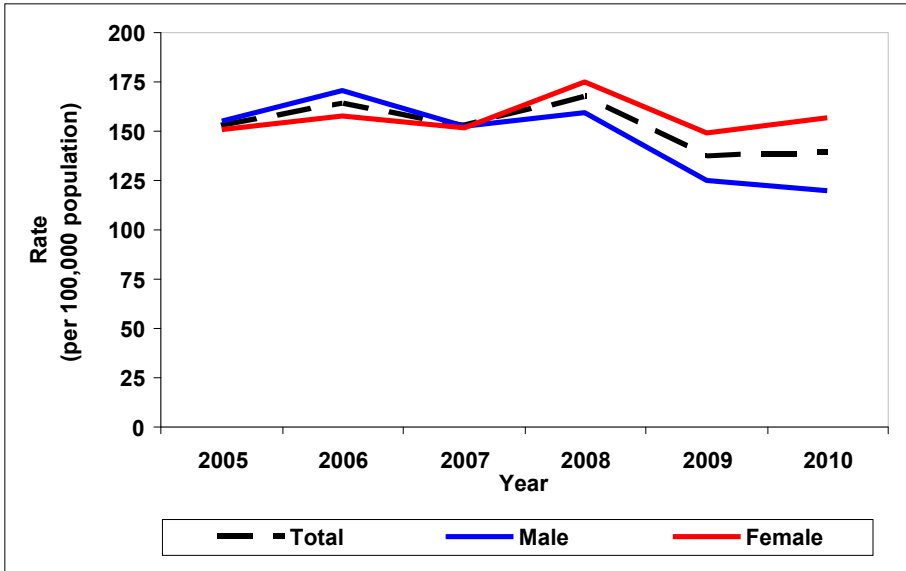
Rates based on less than 20 cases are considered unstable and should be interpreted with caution.

Data source : Tarrant County Public Health

Gonorrhea

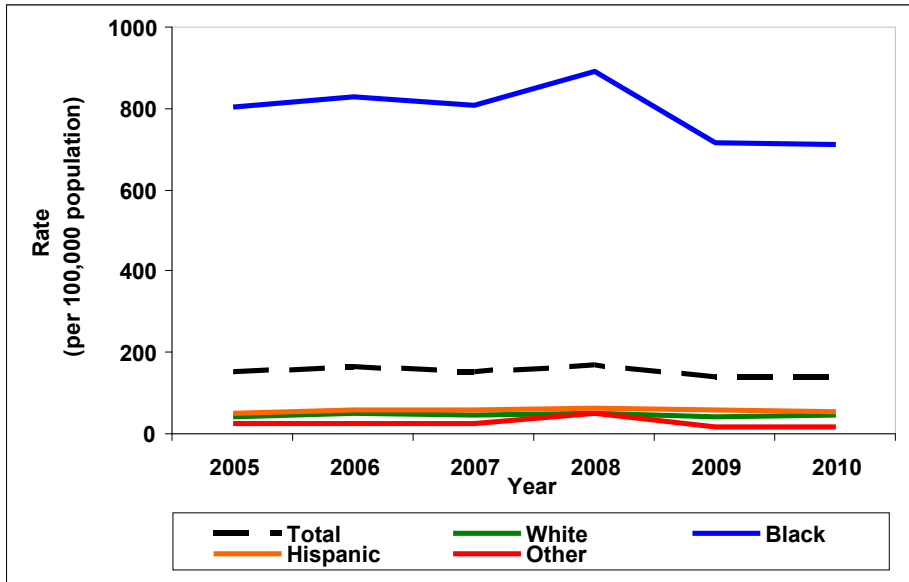
Gonorrhea is a sexually transmitted disease caused by the bacterium *Neisseria gonorrhoeae*. It is spread through contact with the penis, vagina, mouth, or anus. It can also be passed from an infected mother to her baby during delivery.

Figure 32. Gonorrhea by gender, Tarrant County, 2005-2010



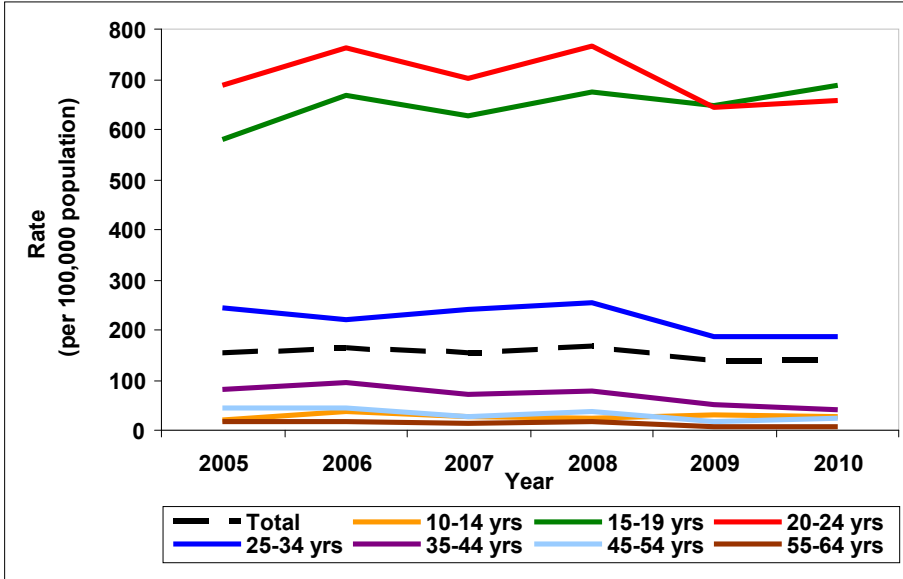
Data source: Tarrant County Public Health

Figure 33. Gonorrhea by race/ethnicity, Tarrant County, 2005-2010



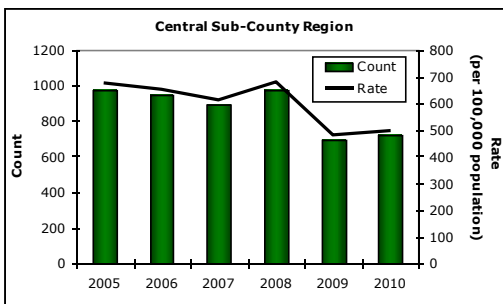
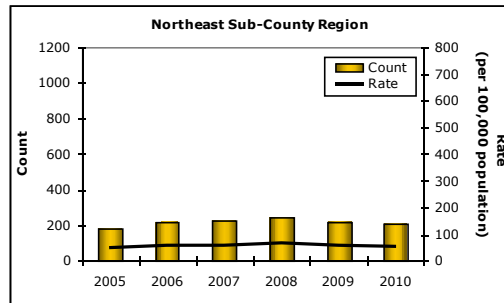
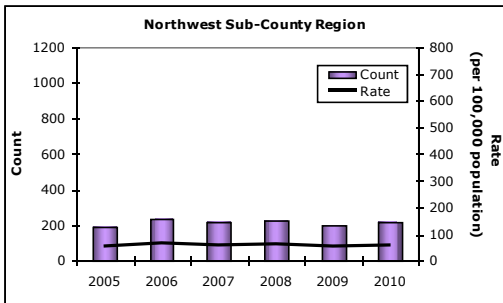
Data source: Tarrant County Public Health

Figure 34. Gonorrhea by age group (in years), Tarrant County, 2005-2010



Note: The numerator was too small for rate calculation for other age groups
 Data source: Tarrant County Public Health

Figure 35. Gonorrhea by sub-county region, Tarrant County, 2005-2010



Less than five cases not shown
 Rates not calculated for less than five cases
 Rates based on less than 20 cases are considered unstable, and should be interpreted with caution
 Map of sub-county areas with ZIP codes available in Appendix

Data source: Tarrant County Public Health

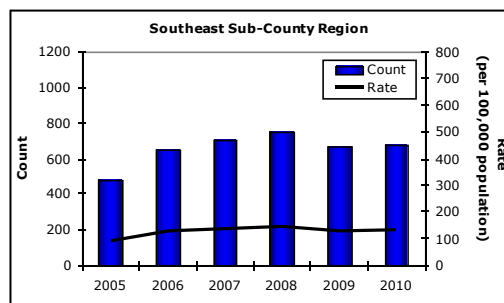
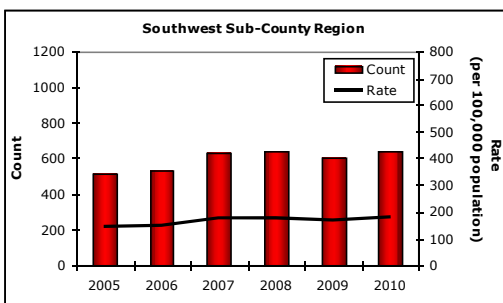


Table 11. Gonorrhea, Tarrant County, 2005-2010

	2005 Total (Rate)	2006 Total (Rate)	2007 Total (Rate)	2008 Total (Rate)	2009 Total (Rate)	2010 Total (Rate)
Total	2,476 (152.7)	2,685 (164.1)	2,564 (152.4)	2,901 (166.9)	2,435 (136.7)	2,526 (138.4)
Gender	Male	1,248 (154.9)	1,390 (170.7)	1,279 (152.9)	1,388 (159.1)	1,103 (120.0)
	Female	1,228 (150.6)	1,295 (157.6)	1,285 (152.0)	1,513 (174.7)	1,423 (157.0)
Race / Ethnicity	White	388 (42.4)	459 (50.8)	399 (44.2)	462 (51.2)	378 (42.0)
	Black	1,756 (804.1)	1,822 (827.6)	1,834 (806.2)	2,082 (891.4)	1,711 (714.9)
	Hispanic	202 (50.8)	248 (59.5)	264 (59.1)	301 (61.6)	311 (59.7)
	Other	22 (24.3)	25 (26.3)	28 (26.9)	56 (49.3)	19 (15.6)
Age Groups	0-4 yrs	< 5 @	0 (0.0)	0 (0.0)	< 5 @	0 (0.0)
	5-9 yrs	0 (0.0)	< 5 @	0 (0.0)	< 5 @	0 (0.0)
	10-14 yrs	24 (19.6)	44 (36.0)	35 (28.6)	28 (22.9)	36 (29.2)
	15-19 yrs	694 (579.7)	811 (668.7)	776 (626.9)	861 (676.2)	837 (648.3)
	20-24 yrs	787 (688.5)	876 (763.4)	831 (703.2)	944 (766.1)	819 (645.6)
	25-34 yrs	635 (245.6)	577 (220.8)	644 (239.1)	719 (254.2)	539 (185.7)
	35-44 yrs	208 (82.3)	245 (96.1)	187 (71.1)	218 (78.9)	144 (51.1)
	45-54 yrs	102 (45.7)	102 (45.0)	66 (28.3)	91 (37.9)	44 (17.9)
	55-64 yrs	22 (15.4)	25 (17.1)	21 (13.5)	27 (16.7)	13 (7.7)
	≥65 yrs	< 5 @	< 5 @	< 5 @	9 (6.6)	< 5 @

Less than five cases not reported; @ indicates numerator too small for rate calculation

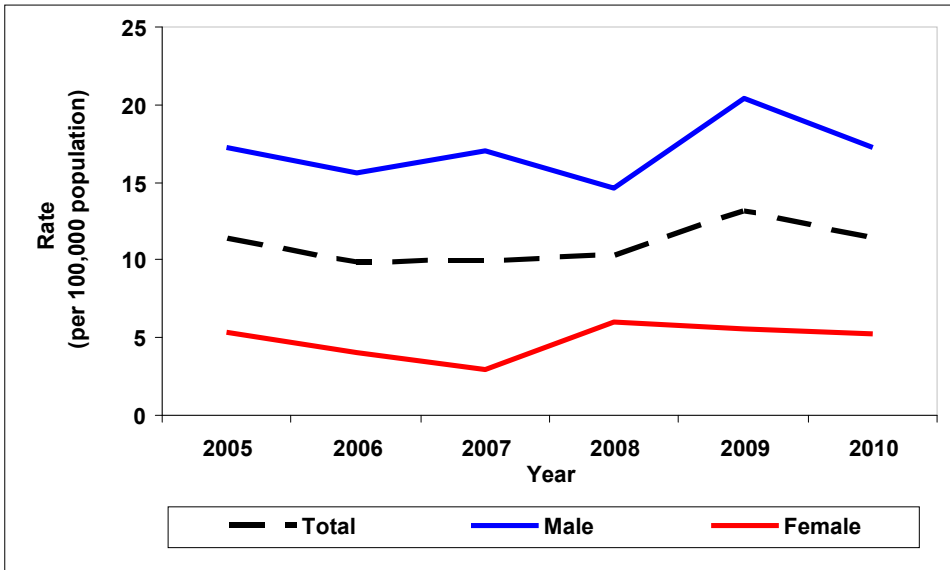
Rates based on less than 20 cases are considered unstable and should be interpreted with caution.

Data source : Tarrant County Public Health

HIV and AIDS

Human Immunodeficiency virus (HIV) is the causative organism for Acquired Immunodeficiency Syndrome (AIDS). It can be transmitted through having sex with someone who is infected, sharing needles with someone who is infected, or being exposed during birth or breastfeeding. The virus destroys specific blood cells called the CD4+ T cells, which are crucial to a person’s ability to fight off infections.

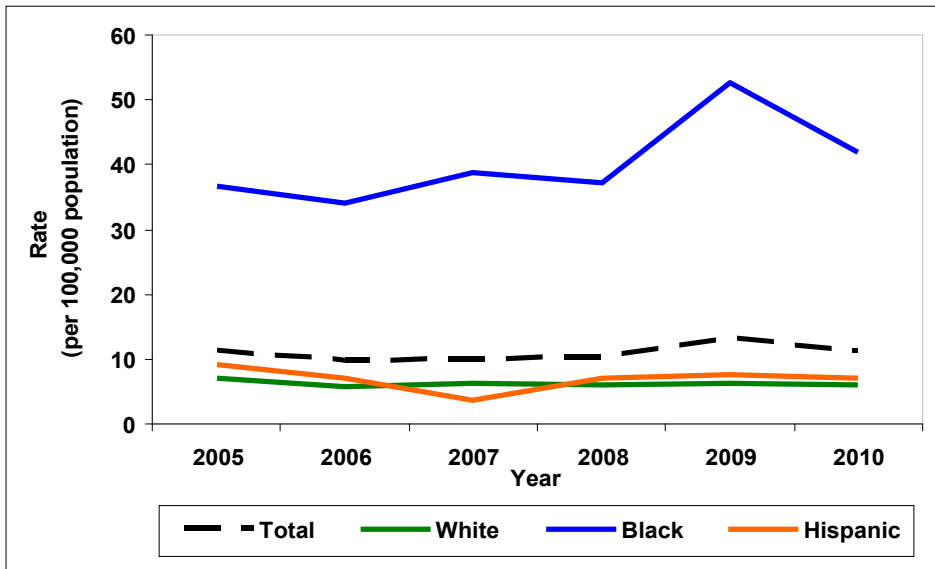
Figure 36. HIV by gender, Tarrant County, 2005-2010



From 2005 to 2010, the incidence rate of HIV among men was three to five times higher than among women.

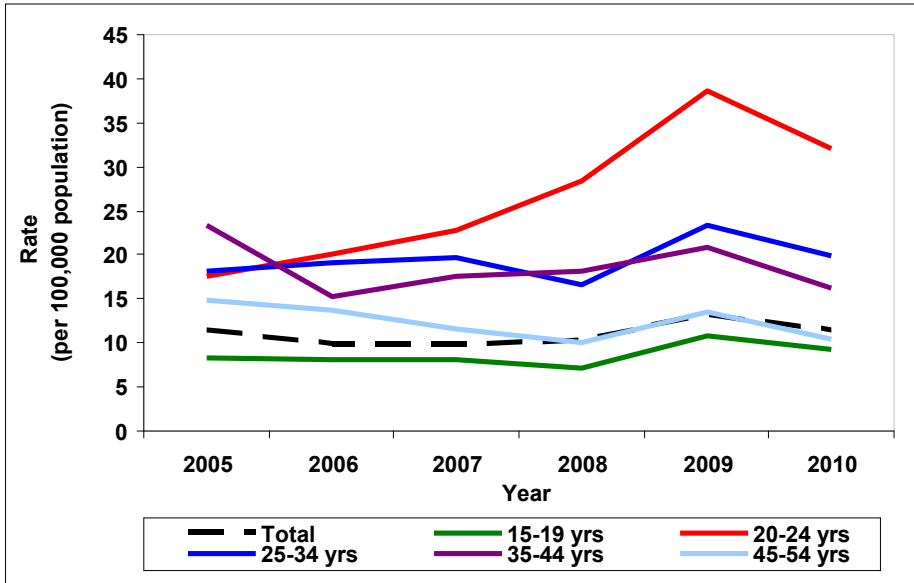
Data source: Tarrant County Public Health

Figure 37. HIV by race/ethnicity, Tarrant County, 2005-2010



Note: The numerator was too small for rate calculation for Other race/ethnicity
 Data source: Tarrant County Public Health

Figure 38. HIV by age group (in years), Tarrant County, 2005-2010



Note: The numerator was too small for rate calculation for other age groups
 Data source: Tarrant County Public Health

Figure 39. HIV by sub-county region, Tarrant County, 2005-2010

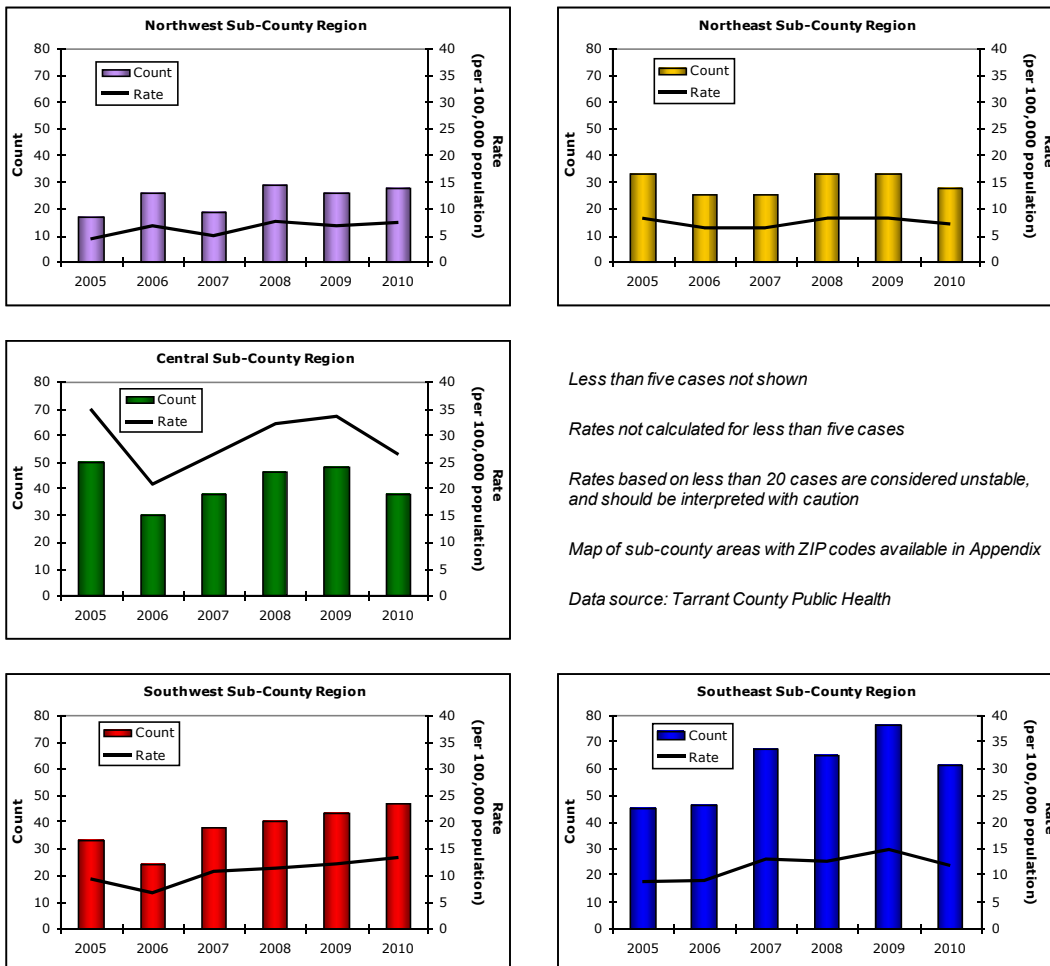


Table 12. HIV, Tarrant County, 2005-2010

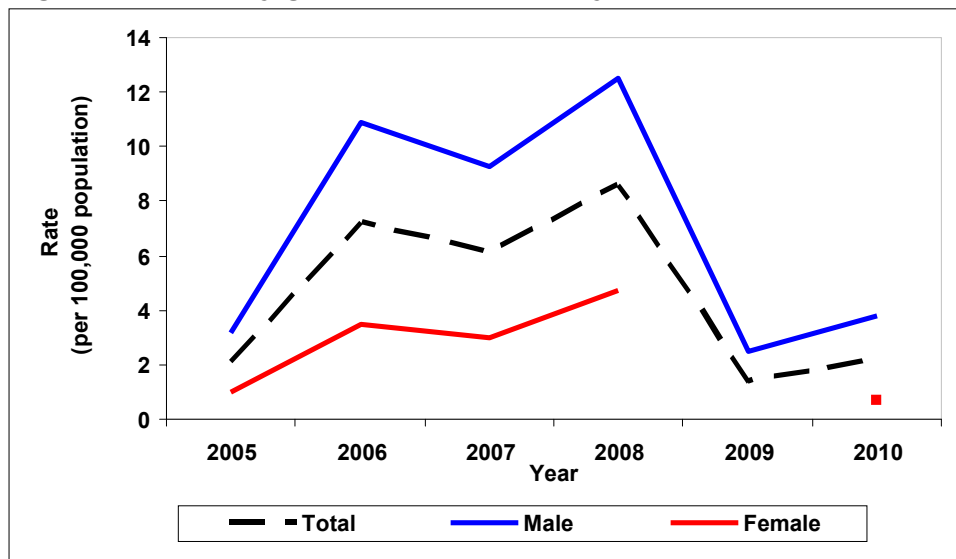
	2005 Total (Rate)	2006 Total (Rate)	2007 Total (Rate)	2008 Total (Rate)	2009 Total (Rate)	2010 Total (Rate)	
Total	183 (11.3)	160 (9.8)	167 (9.9)	179 (10.3)	233 (13.1)	206 (11.3)	
Gender	Male	139 (17.2)	127 (15.6)	142 (17.0)	127 (14.6)	183 (20.4)	159 (17.3)
	Female	44 (5.4)	33 (4.0)	25 (3.0)	52 (6.0)	50 (5.6)	47 (5.2)
Race / Ethnicity	White	64 (7.0)	52 (5.8)	58 (6.4)	54 (6.0)	58 (6.4)	55 (6.1)
	Black	80 (36.6)	75 (34.1)	88 (38.7)	87 (37.2)	126 (52.6)	103 (42.0)
	Hispanic	36 (9.1)	29 (7.0)	16 (3.6)	35 (7.2)	39 (7.5)	40 (7.2)
	Other	< 5 @	< 5 @	5 (4.8)	< 5 @	7 (5.8)	< 5 @
Age Groups	0-4 yrs	0 (0.0)	< 5 @	< 5 @	< 5 @	0 (0.0)	0 (0.0)
	5-9 yrs	0 (0.0)	0 (0.0)	0 (0.0)	0 (0.0)	0 (0.0)	0 (0.0)
	10-14 yrs	0 (0.0)	0 (0.0)	0 (0.0)	0 (0.0)	0 (0.0)	0 (0.0)
	15-19 yrs	10 (8.4)	10 (8.2)	10 (8.1)	9 (7.1)	14 (10.8)	12 (9.2)
	20-24 yrs	20 (17.5)	23 (20.0)	27 (22.8)	35 (28.4)	49 (38.6)	42 (32.0)
	25-34 yrs	47 (18.2)	50 (19.1)	53 (19.7)	47 (16.6)	68 (23.4)	59 (19.8)
	35-44 yrs	59 (23.3)	39 (15.3)	46 (17.5)	50 (18.1)	59 (20.9)	47 (16.2)
	45-54 yrs	33 (14.8)	31 (13.7)	27 (11.6)	24 (10.0)	33 (13.5)	26 (10.4)
	55-64 yrs	11 (7.7)	5 (3.4)	< 5 @	10 (6.2)	10 (5.9)	16 (9.0)
	≥65 yrs	< 5 @	< 5 @	0 (0.0)	< 5 @	0 (0.0)	< 5 @

Less than five cases not reported; @ indicates numerator too small for rate calculation

Rates based on less than 20 cases are considered unstable and should be interpreted with caution.

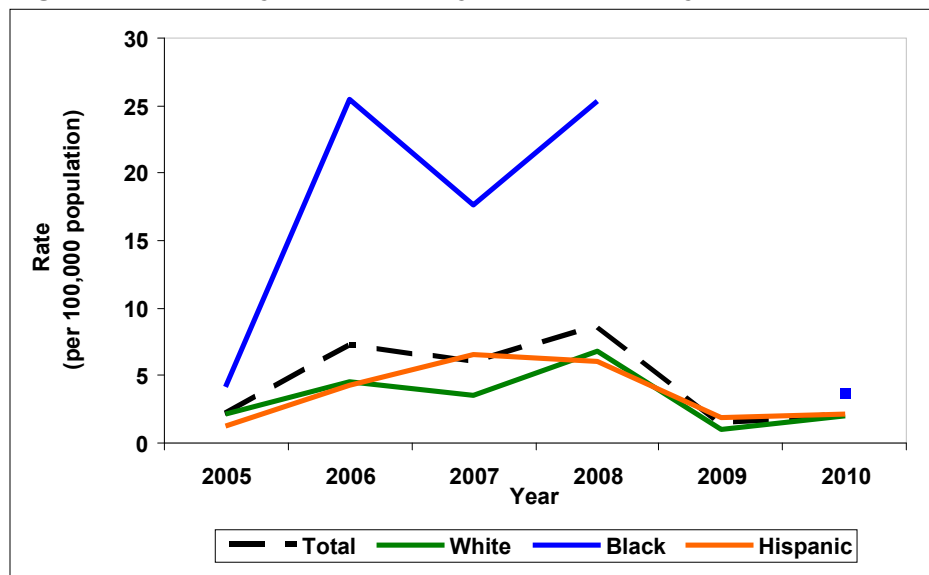
Data source : Tarrant County Public Health

Figure 40. AIDS by gender, Tarrant County, 2005-2010



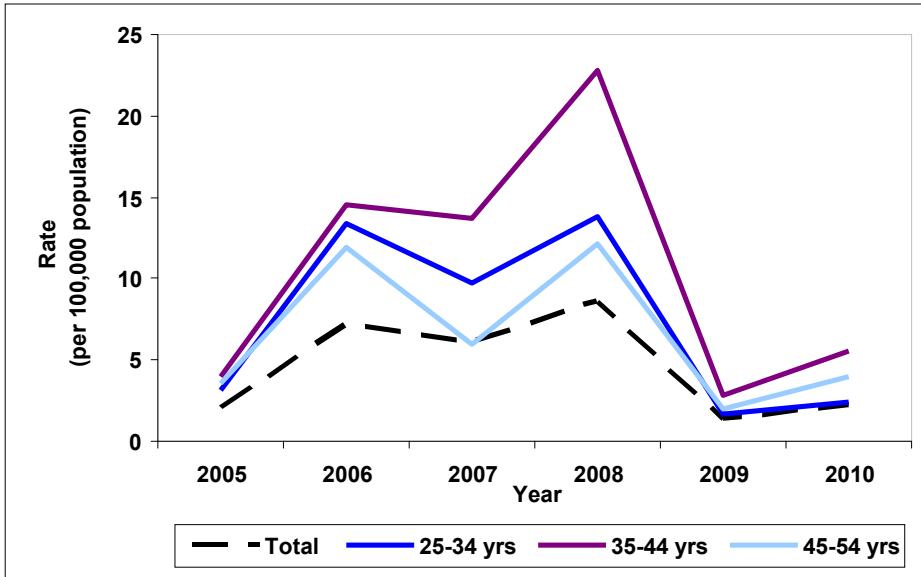
Note: The numerator was too small for rate calculation for Female (2009)
 Data source: Tarrant County Public Health

Figure 41. AIDS by race/ethnicity, Tarrant County, 2005-2010



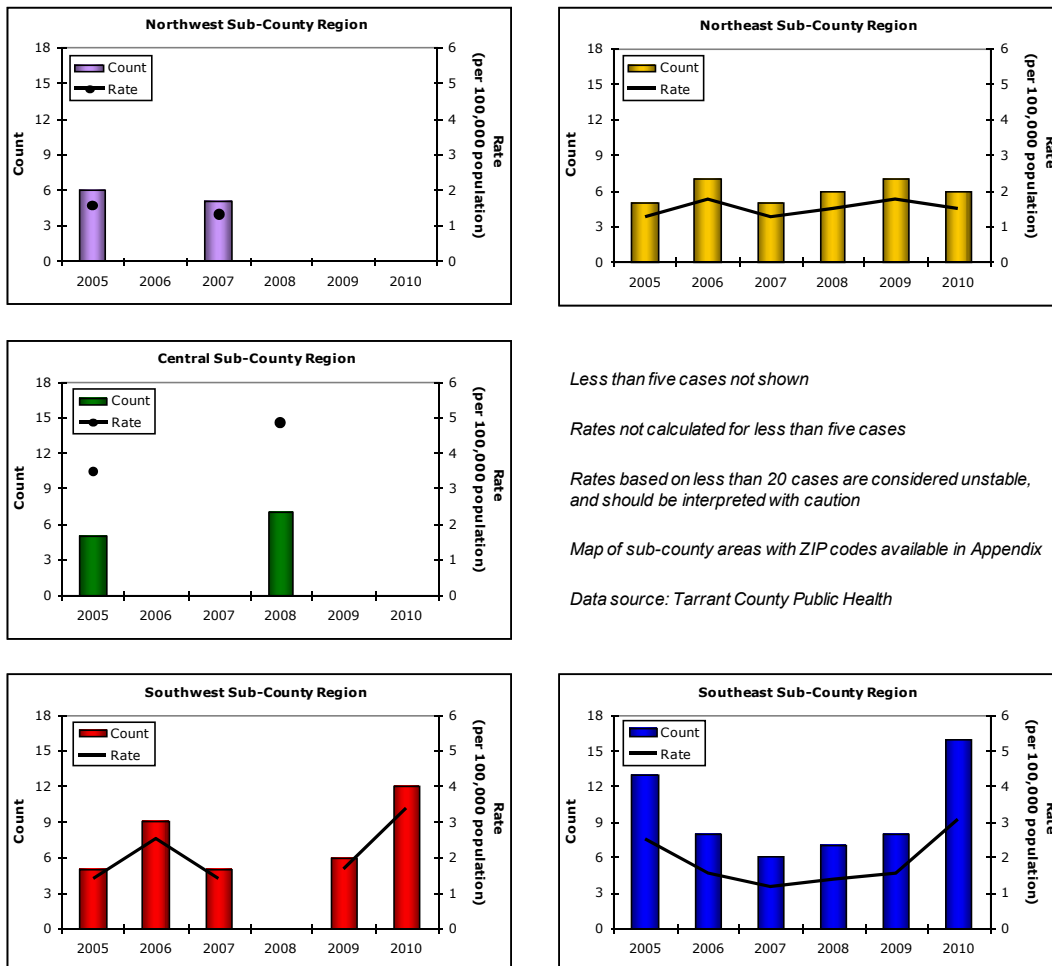
Note: The numerator was too small for rate calculation for Black (2009) and Other race/ethnicity
 Data source: Tarrant County Public Health

Figure 42. AIDS by age group (in years), Tarrant County, 2005-2010



Note: The numerator was too small for rate calculation for other age groups
 Data source: Tarrant County Public Health

Figure 43. AIDS by sub-county region, Tarrant County, 2005-2010



Less than five cases not shown

Rates not calculated for less than five cases

Rates based on less than 20 cases are considered unstable, and should be interpreted with caution

Map of sub-county areas with ZIP codes available in Appendix

Data source: Tarrant County Public Health

Table 13. AIDS, Tarrant County, 2005-2010

	2005 Total (Rate)	2006 Total (Rate)	2007 Total (Rate)	2008 Total (Rate)	2009 Total (Rate)	2010 Total (Rate)	
Total	34 (2.1)	118 (7.2)	103 (6.1)	150 (8.6)	25 (1.4)	41 (2.2)	
Gender	Male	26 (3.2)	89 (10.9)	78 (9.3)	109 (12.5)	22 (2.5)	35 (3.8)
	Female	8 (1.0)	29 (3.5)	25 (3.0)	41 (4.7)	< 5 @	6 (0.7)
Race / Ethnicity	White	20 (2.2)	42 (4.6)	32 (3.5)	61 (6.8)	9 (1.0)	18 (2.0)
	Black	9 (4.1)	56 (25.4)	40 (17.6)	59 (25.3)	< 5 @	9 (3.7)
	Hispanic	5 (1.3)	18 (4.3)	29 (6.5)	30 (6.1)	10 (1.9)	12 (2.2)
	Other	0 (0.0)	< 5 @	< 5 @	0 (0.0)	< 5 @	< 5 @
Age Groups	0-4 yrs	0 (0.0)	0 (0.0)	0 (0.0)	0 (0.0)	0 (0.0)	0 (0.0)
	5-9 yrs	0 (0.0)	0 (0.0)	0 (0.0)	0 (0.0)	0 (0.0)	0 (0.0)
	10-14 yrs	0 (0.0)	0 (0.0)	0 (0.0)	0 (0.0)	0 (0.0)	0 (0.0)
	15-19 yrs	0 (0.0)	< 5 @	5 (4.0)	< 5 @	0 (0.0)	0 (0.0)
	20-24 yrs	< 5 @	6 (5.2)	9 (7.6)	8 (6.5)	< 5 @	< 5 @
	25-34 yrs	8 (3.1)	35 (13.4)	26 (9.7)	39 (13.8)	5 (1.7)	7 (2.4)
	35-44 yrs	10 (4.0)	37 (14.5)	36 (13.7)	63 (22.8)	8 (2.8)	16 (5.5)
	45-54 yrs	8 (3.6)	27 (11.9)	14 (6.0)	29 (12.1)	5 (2.0)	10 (4.0)
	55-64 yrs	5 (3.5)	9 (6.2)	10 (6.4)	7 (4.3)	< 5 @	5 (2.8)
	≥65 yrs	< 5 @	< 5 @	< 5 @	< 5 @	< 5 @	< 5 @

Less than five cases not reported; @ indicates numerator too small for rate calculation

Rates based on less than 20 cases are considered unstable and should be interpreted with caution.

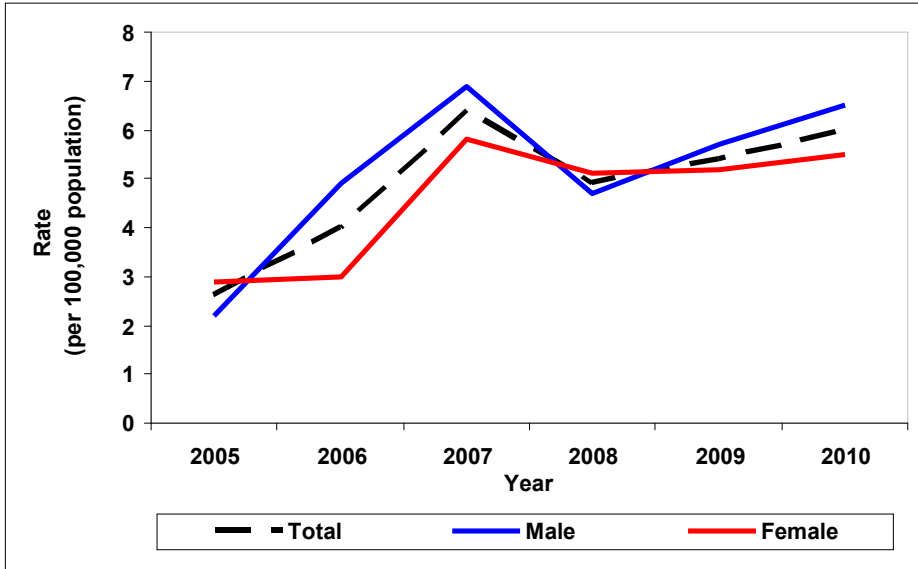
Data source : Tarrant County Public Health

ENTERIC DISEASES

Campylobacteriosis

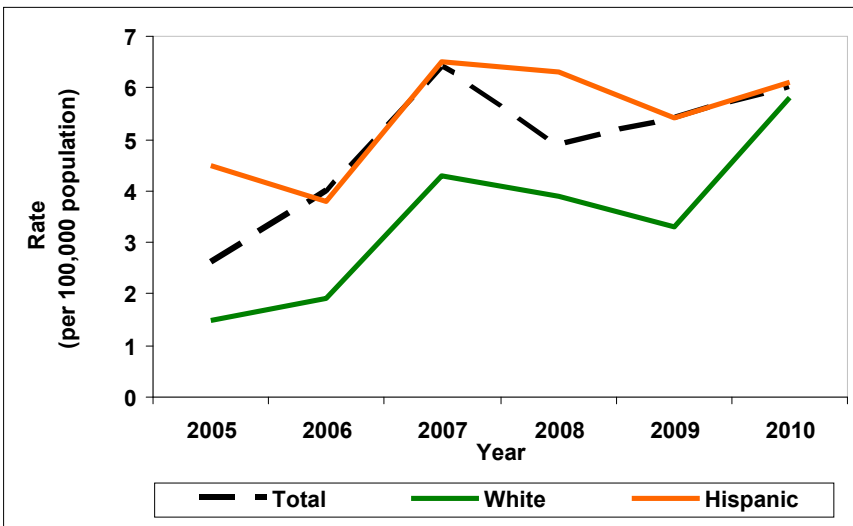
Campylobacteriosis (also known as Campy) is an acute infectious disease of the digestive tract which is caused by bacteria of the genus *Campylobacter*. It can be caused by the consumption of raw or undercooked poultry, unpasteurized milk, or contaminated water.

Figure 44. Campylobacteriosis by gender, Tarrant County, 2005-2010



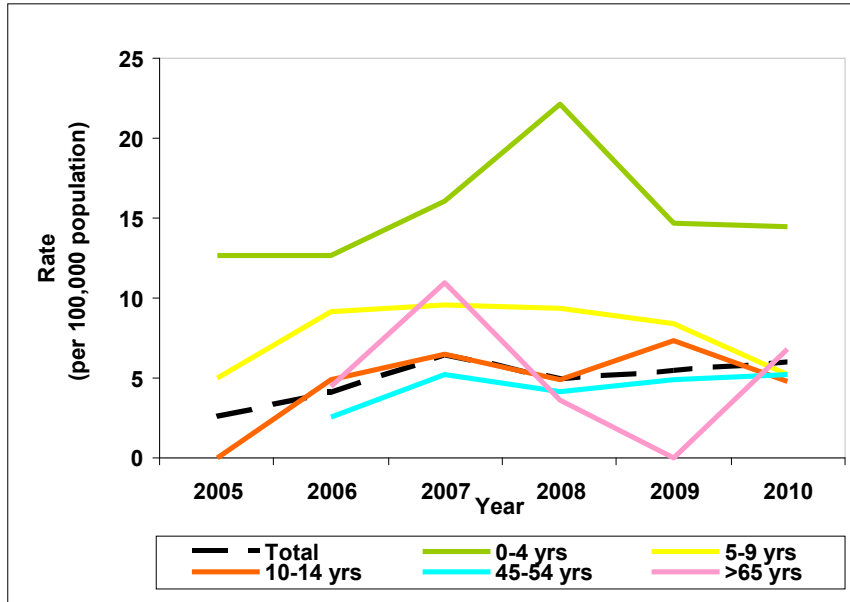
Data source: Tarrant County Public Health

Figure 45. Campylobacteriosis by race/ethnicity, Tarrant County, 2005-2010



Note: The numerator was too small for rate calculation for Black and Other race/ethnicity
 Data source: Tarrant County Public Health

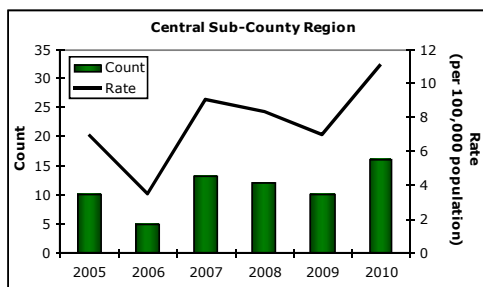
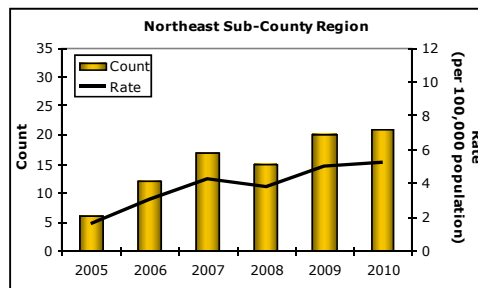
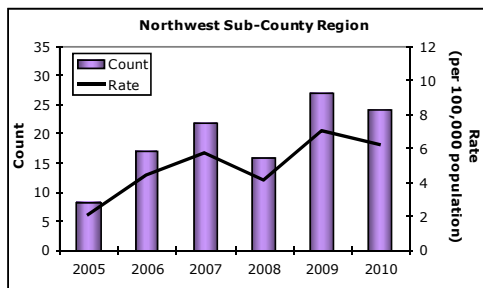
Figure 46. Campylobacteriosis by age group (in years), Tarrant County, 2005-2010



Campy infections were most frequent among children aged 0 to 4 years.

Note: The numerator was too small for rate calculation for other age groups
Data source: Tarrant County Public Health

Figure 47. Campylobacteriosis by sub-county region, Tarrant County, 2005-2010



Less than five cases not shown

Rates not calculated for less than five cases

Rates based on less than 20 cases are considered unstable, and should be interpreted with caution

Map of sub-county areas with ZIP codes available in Appendix

Data source: Tarrant County Public Health

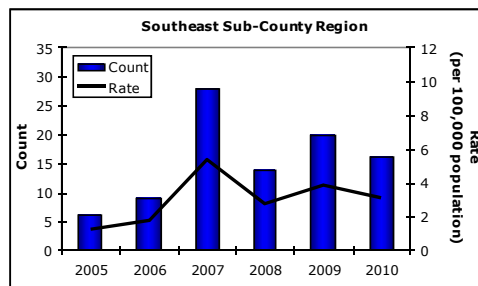
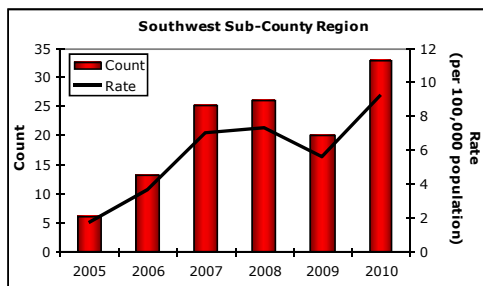


Table 14. Campylobacteriosis, Tarrant County, 2005-2010

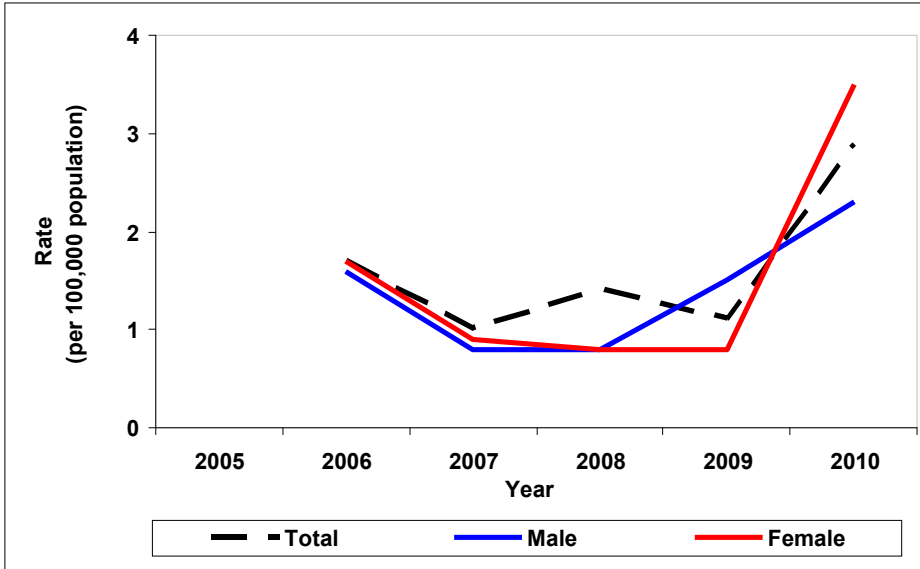
	2005 Total (Rate)	2006 Total (Rate)	2007 Total (Rate)	2008 Total (Rate)	2009 Total (Rate)	2010 Total (Rate)	
Total	42 (2.6)	66 (4.0)	107 (6.4)	85 (4.9)	97 (5.4)	110 (6.0)	
Gender	Male	18 (2.2)	40 (4.9)	58 (6.9)	41 (4.7)	51 (5.7)	60 (6.5)
	Female	24 (2.9)	25 (3.0)	49 (5.8)	44 (5.1)	46 (5.2)	50 (5.5)
Race / Ethnicity	White	14 (1.5)	17 (1.9)	39 (4.3)	35 (3.9)	30 (3.3)	52 (5.8)
	Black	< 5 @	< 5 @	< 5 @	7 (3.0)	10 (4.2)	12 (4.9)
	Hispanic	18 (4.5)	16 (3.8)	29 (6.5)	31 (6.3)	28 (5.4)	34 (6.1)
	Other	0 (0.0)	0 (0.0)	0 (0.0)	< 5 @	< 5 @	< 5 @
Age Groups	0-4 yrs	17 (12.7)	17 (12.7)	22 (16.1)	31 (22.1)	21 (14.7)	21 (14.5)
	5-9 yrs	6 (5.0)	11 (9.1)	12 (9.6)	12 (9.4)	11 (8.4)	7 (5.2)
	10-14 yrs	< 5 @	6 (4.9)	8 (6.5)	6 (4.9)	9 (7.3)	6 (4.8)
	15-19 yrs	< 5 @	< 5 @	< 5 @	< 5 @	< 5 @	9 (6.9)
	20-24 yrs	< 5 @	< 5 @	< 5 @	10 (8.1)	6 (4.7)	7 (5.3)
	25-34 yrs	< 5 @	5 (1.9)	10 (3.7)	< 5 @	7 (2.4)	18 (6.1)
	35-44 yrs	5 (2.0)	< 5 @	13 (4.9)	< 5 @	8 (2.8)	10 (3.5)
	45-54 yrs	< 5 @	6 (2.6)	12 (5.2)	10 (4.2)	12 (4.9)	13 (5.2)
	55-64 yrs	0 (0.0)	< 5 @	9 (5.8)	5 (3.1)	13 (7.7)	9 (5.1)
	≥65 yrs	< 5 @	6 (4.5)	15 (11.0)	5 (3.6)	0 (0.0)	10 (6.8)

Less than five cases not reported; @ indicates numerator too small for rate calculation
 Rates based on less than 20 cases are considered unstable and should be interpreted with caution.
 Data source : Tarrant County Public Health

Escherichia coli Infection

Escherichia Coli (*E.coli*) is a type of bacteria that resides within the digestive tracts of humans and animals. Most types of *E.coli* are harmless, but some can cause a bloody diarrhea. The infection can be caused by the consumption of food or water contaminated with the feces containing the bacteria.

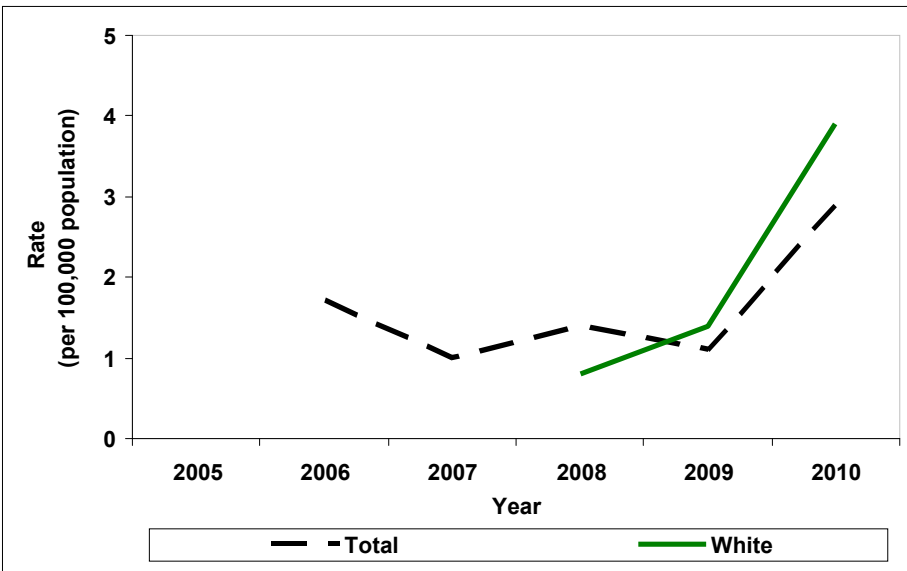
Figure 48. *E. coli* by gender, Tarrant County, 2005-2010



A series of multi-state outbreaks of E. coli in 2010 resulted in an increase in reported cases that year.

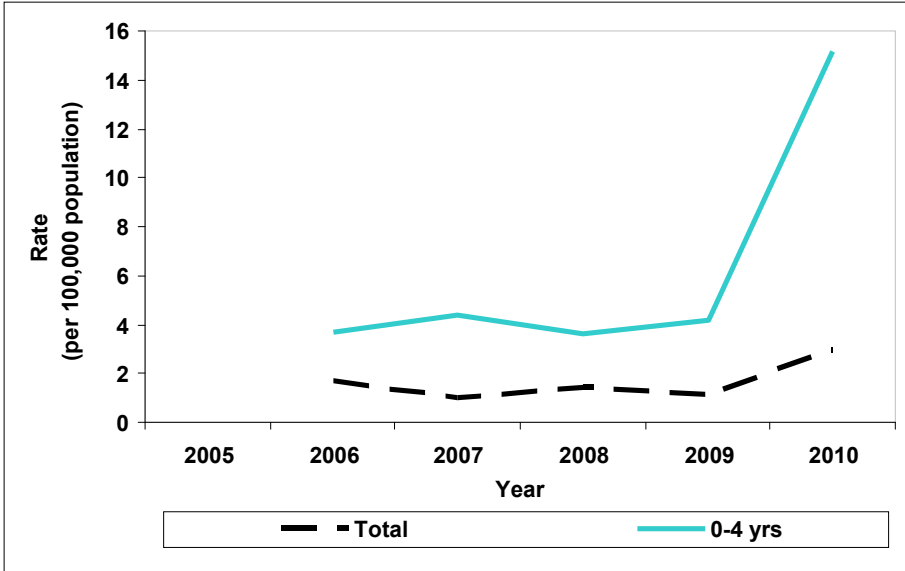
Note: The numerator was too small for rate calculation for 2005
Data source: Tarrant County Public Health

Figure 49. *E. coli* by race/ethnicity, Tarrant County, 2005-2010



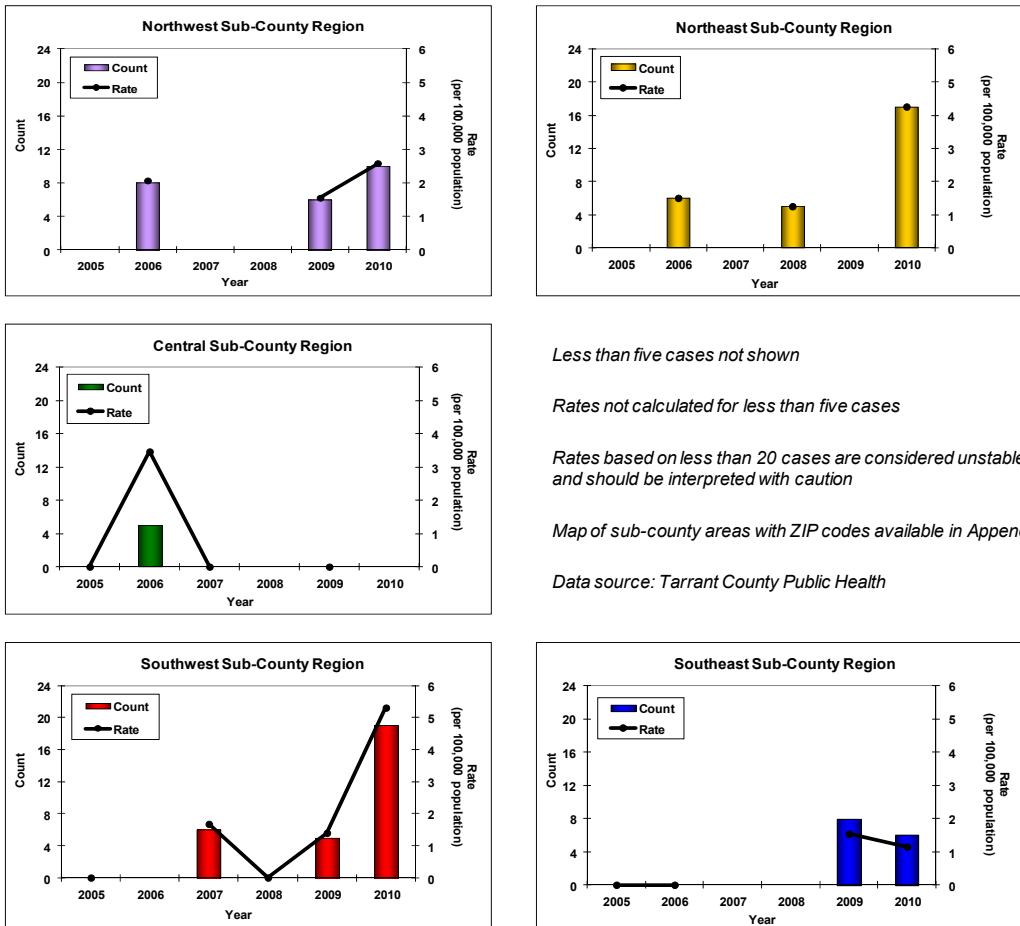
Note: The numerator was too small for rate calculation for Black, Hispanic, and Other race/ethnicity, as well as for White (2005-2007)
Data source: Tarrant County Public Health

Figure 50. *E. coli* by age group (in years), Tarrant County, 2005-2010



Note: The numerator was too small for rate calculation for other age groups
 Data source: Tarrant County Public Health

Figure 51. *E. coli* by sub-county region, Tarrant County, 2005-2010



Less than five cases not shown
 Rates not calculated for less than five cases
 Rates based on less than 20 cases are considered unstable, and should be interpreted with caution
 Map of sub-county areas with ZIP codes available in Appendix
 Data source: Tarrant County Public Health

Table 15. E.coli Infection, Tarrant County, 2005-2010

	2005 Total (Rate)	2006 Total (Rate)	2007 Total (Rate)	2008 Total (Rate)	2009 Total (Rate)	2010 Total (Rate)	
Total	< 5 @	27 (1.7)	17 (1.0)	24 (1.4)	20 (1.1)	53 (2.9)	
Gender	Male	< 5 @	13 (1.6)	7 (0.8)	7 (0.8)	13 (1.5)	21 (2.3)
	Female	< 5 @	14 (1.7)	8 (0.9)	7 (0.8)	7 (0.8)	32 (3.5)
Race / Ethnicity	White	< 5 @	< 5 @	< 5 @	7 (0.8)	13 (1.4)	35 (3.9)
	Black	0 (0.0)	0 (0.0)	< 5 @	0 (0.0)	0 (0.0)	< 5 @
	Hispanic	0 (0.0)	0 (0.0)	< 5 @	< 5 @	< 5 @	10 (1.8)
	Other	0 (0.0)	0 (0.0)	0 (0.0)	0 (0.0)	0 (0.0)	< 5 @
Age Groups	0-4 yrs	< 5 @	5 (3.7)	6 (4.4)	5 (3.6)	6 (4.2)	22 (15.2)
	5-9 yrs	< 5 @	5 (4.1)	< 5 @	< 5 @	0 (0.0)	9 (6.7)
	10-14 yrs	0 (0.0)	< 5 @	0 (0.0)	< 5 @	< 5 @	< 5 @
	15-19 yrs	0 (0.0)	0 (0.0)	< 5 @	< 5 @	< 5 @	< 5 @
	20-24 yrs	< 5 @	< 5 @	0 (0.0)	0 (0.0)	0 (0.0)	5 (3.8)
	25-34 yrs	0 (0.0)	< 5 @	0 (0.0)	0 (0.0)	< 5 @	< 5 @
	35-44 yrs	0 (0.0)	5 (2.0)	< 5 @	0 (0.0)	< 5 @	0 (0.0)
	45-54 yrs	0 (0.0)	< 5 @	0 (0.0)	0 (0.0)	0 (0.0)	< 5 @
	55-64 yrs	0 (0.0)	< 5 @	< 5 @	0 (0.0)	< 5 @	< 5 @
	>=65 yrs	0 (0.0)	< 5 @	0 (0.0)	< 5 @	< 5 @	< 5 @

Less than five cases not reported; @ indicates numerator too small for rate calculation

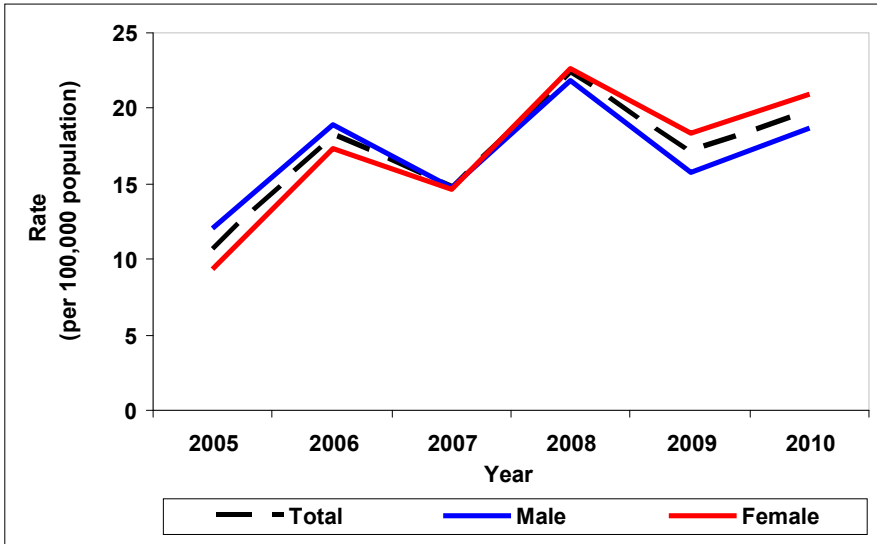
Rates based on less than 20 cases are considered unstable and should be interpreted with caution.

Data source : Tarrant County Public Health

Salmonellosis

Salmonellosis is an infection caused by the bacteria *Salmonella* and is commonly manifested by acute enterocolitis. It can be contracted through eating foods contaminated with animal feces such as undercooked beef and poultry, milk, and raw eggs.

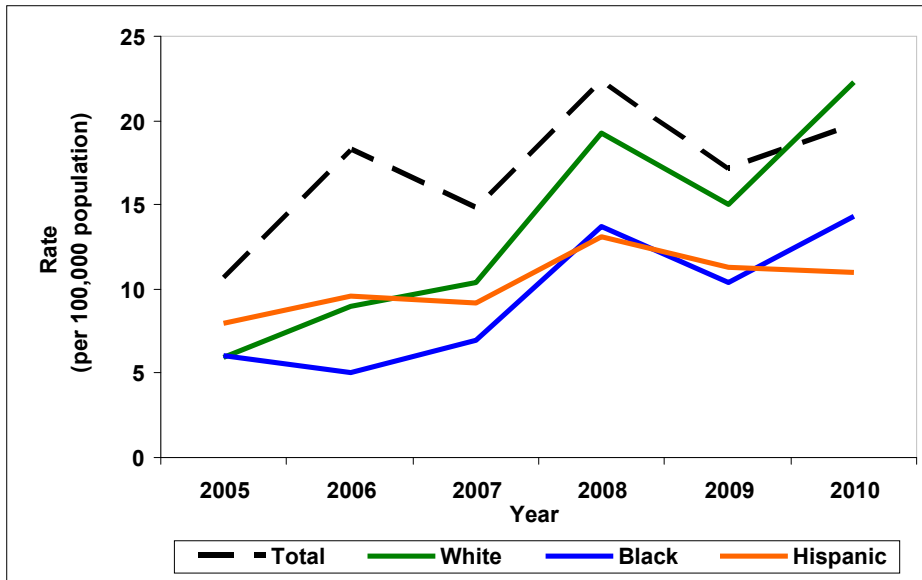
Figure 52. Salmonellosis by gender, Tarrant County, 2005-2010



Salmonellosis is traditionally the most frequently reported enteric disease in Tarrant County.

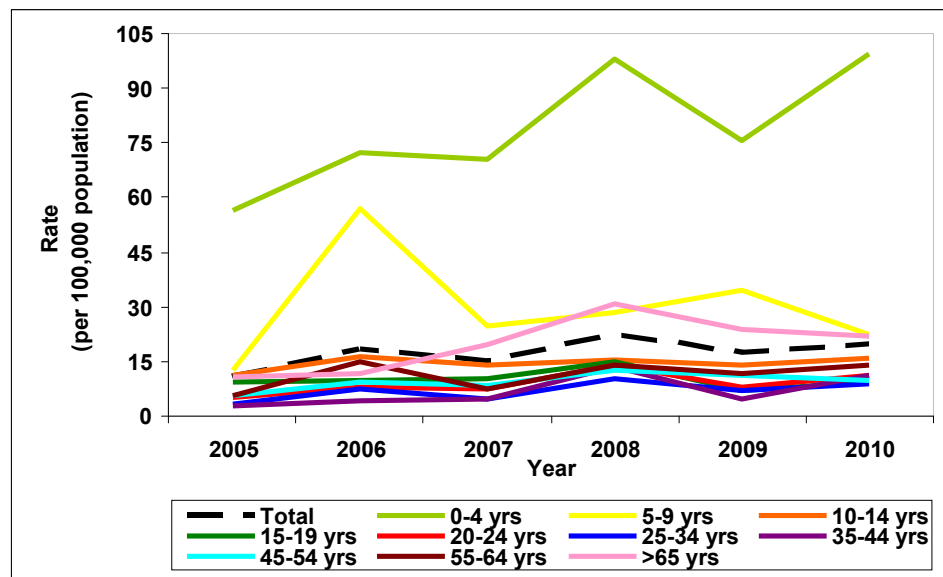
Data source: Tarrant County Public Health

Figure 53. Salmonellosis by race/ethnicity, Tarrant County, 2005-2010



Note: The numerator was too small for rate calculation for Other race/ethnicity
 Data source: Tarrant County Public Health

Figure 54. Salmonellosis by age group (in years), Tarrant County, 2005-2010



Data source: Tarrant County Public Health

Figure 55. Salmonellosis by sub-county region, Tarrant County, 2005-2010

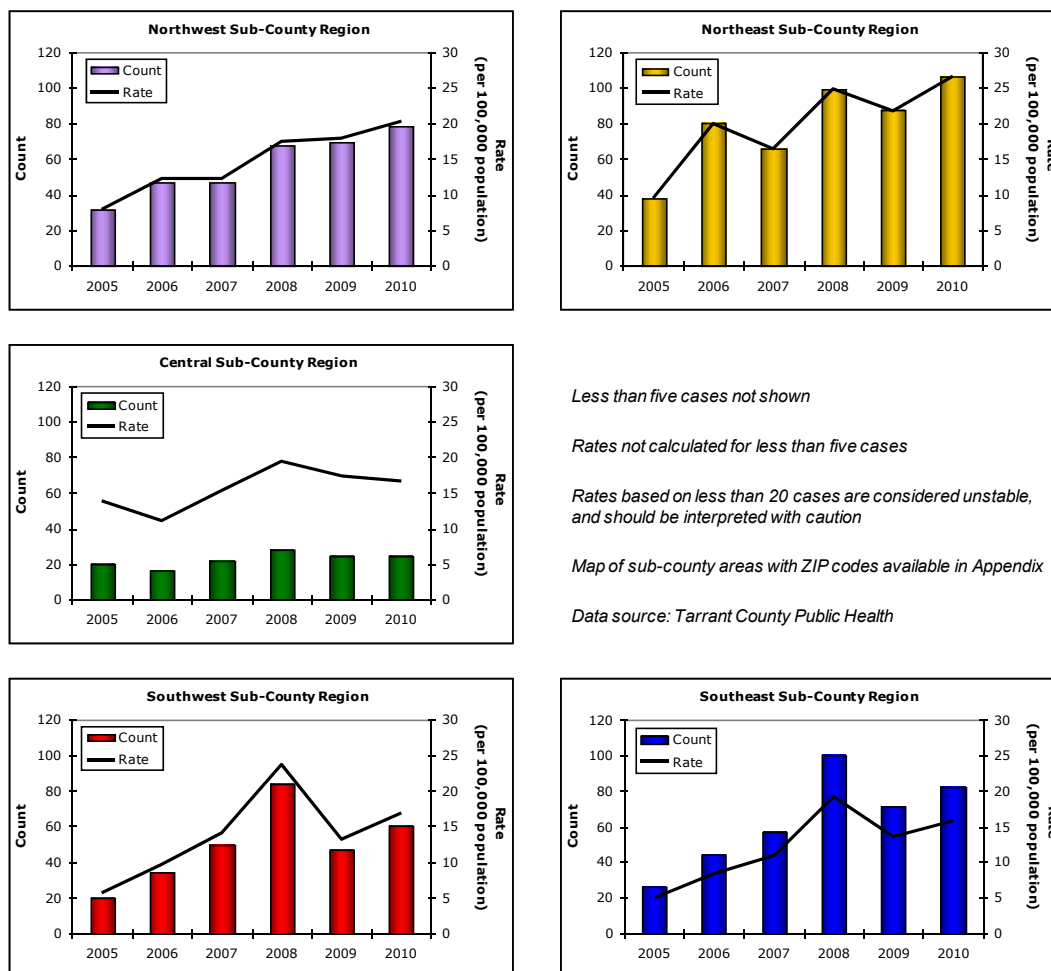


Table 16. Salmonellosis, Tarrant County, 2005-2010

		2005 Total (Rate)	2006 Total (Rate)	2007 Total (Rate)	2008 Total (Rate)	2009 Total (Rate)	2010 Total (Rate)
Total		174 (10.7)	298 (18.2)	249 (14.8)	389 (22.4)	304 (17.1)	362 (19.8)
Gender	Male	97 (12.0)	154 (18.9)	124 (14.8)	190 (21.8)	141 (15.8)	172 (18.7)
	Female	77 (9.4)	142 (17.3)	123 (14.6)	196 (22.6)	163 (18.4)	190 (21.0)
Race / Ethnicity	White	54 (5.9)	81 (9.0)	94 (10.4)	174 (19.3)	135 (15.0)	200 (22.3)
	Black	13 (6.0)	11 (5.0)	16 (7.0)	32 (13.7)	25 (10.4)	35 (14.3)
	Hispanic	32 (8.0)	40 (9.6)	41 (9.2)	64 (13.1)	59 (11.3)	61 (11.0)
	Other	10 (11.0)	8 (8.4)	< 5 @	9 (7.9)	5 (4.1)	23 (17.7)
Age Groups	0-4 yrs	76 (56.7)	97 (72.5)	96 (70.4)	137 (97.9)	108 (75.8)	144 (99.2)
	5-9 yrs	15 (12.4)	69 (57.1)	31 (24.9)	36 (28.3)	45 (34.4)	30 (22.2)
	10-14 yrs	14 (11.4)	20 (16.4)	17 (13.9)	19 (15.5)	17 (13.8)	20 (16.1)
	15-19 yrs	11 (9.2)	12 (9.9)	13 (10.5)	19 (14.9)	9 (7.0)	12 (9.2)
	20-24 yrs	6 (5.2)	9 (7.8)	9 (7.6)	17 (13.8)	10 (7.9)	15 (11.4)
	25-34 yrs	9 (3.5)	20 (7.7)	13 (4.8)	29 (10.3)	21 (7.2)	27 (9.1)
	35-44 yrs	7 (2.8)	11 (4.3)	12 (4.6)	37 (13.4)	13 (4.6)	32 (11.1)
	45-54 yrs	13 (5.8)	21 (9.3)	19 (8.2)	30 (12.5)	27 (11.0)	25 (10.0)
	55-64 yrs	8 (5.6)	22 (15.0)	12 (7.7)	23 (14.2)	20 (11.8)	25 (14.1)
≥65 yrs	14 (10.6)	16 (11.9)	27 (19.8)	42 (30.6)	34 (24.0)	32 (21.8)	

Less than five cases not reported; @ indicates numerator too small for rate calculation

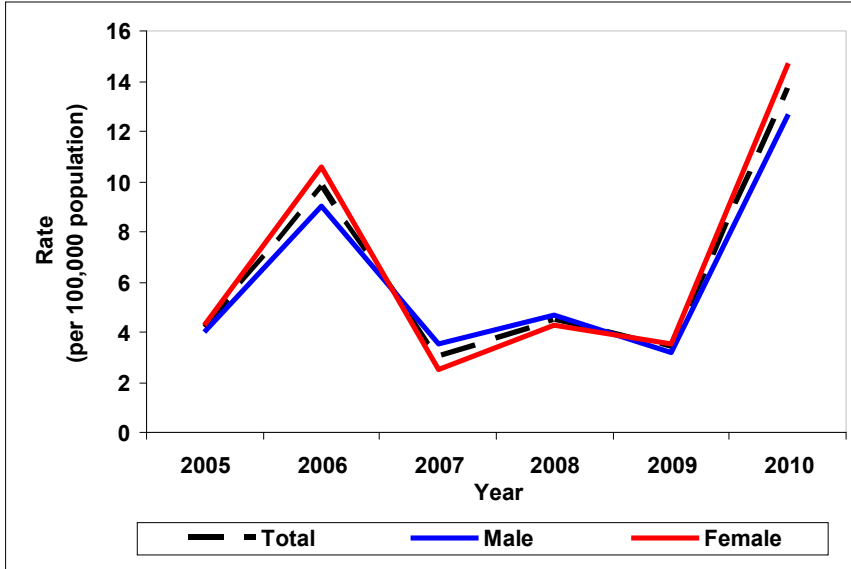
Rates based on less than 20 cases are considered unstable and should be interpreted with caution.

Data source : Tarrant County Public Health

Shigellosis

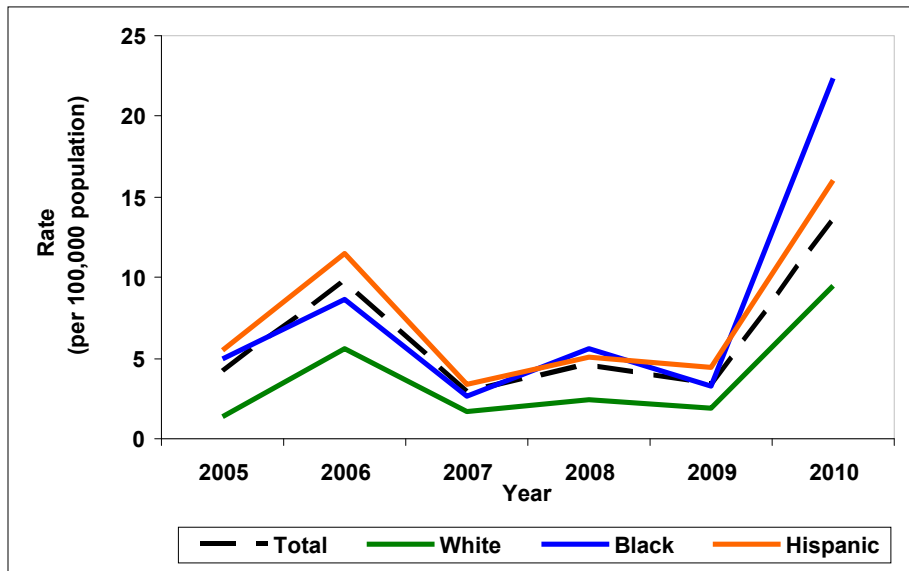
Shigellosis is an infectious disease of the digestive tract caused by the bacterium *Shigella*. It is transmitted via the fecal-oral route and can be caused by consuming contaminated food or water.

Figure 56. Shigellosis by gender, Tarrant County, 2005-2010



Data source: Tarrant County Public Health

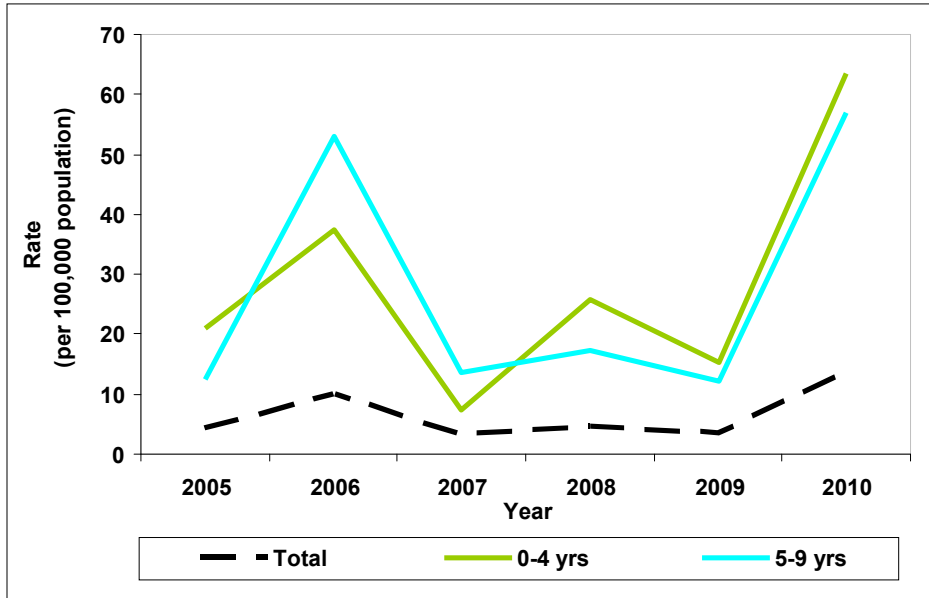
Figure 57. Shigellosis by race/ethnicity, Tarrant County, 2005-2010



Note: The numerator was too small for rate calculation for Other race/ethnicity

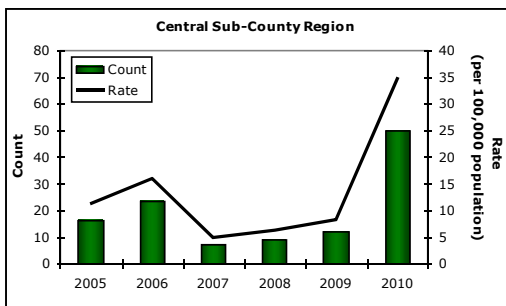
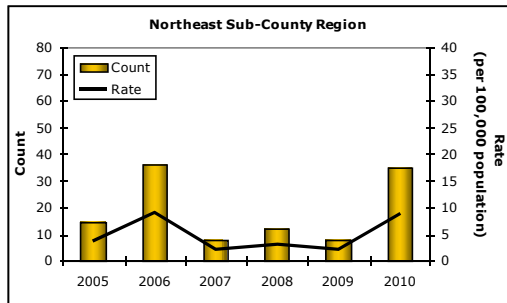
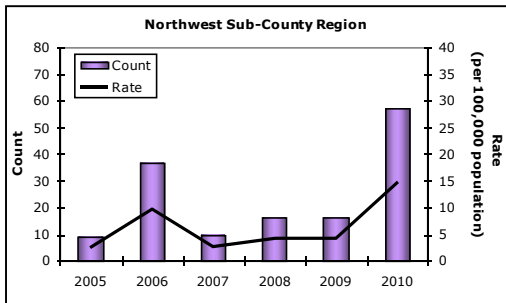
Data source: Tarrant County Public Health

Figure 58. Shigellosis by age group (in years), Tarrant County, 2005-2010



Note: The numerator was too small for rate calculation for other age groups
 Data source: Tarrant County Public Health

Figure 59. Shigellosis by sub-county region, Tarrant County, 2005-2010



Less than five cases not shown
 Rates not calculated for less than five cases
 Rates based on less than 20 cases are considered unstable, and should be interpreted with caution
 Map of sub-county areas with ZIP codes available in Appendix
 Data source: Tarrant County Public Health

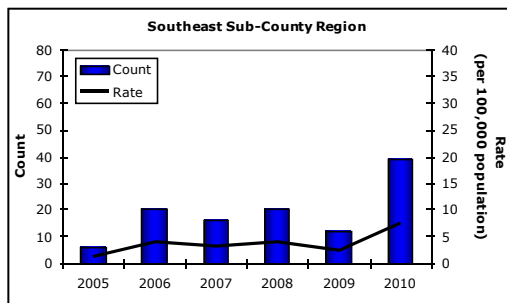
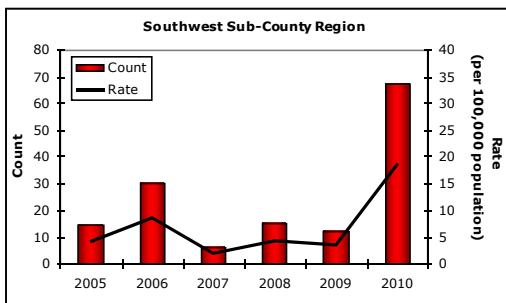


Table 17. Shigellosis, Tarrant County, 2005-2010

	2005 Total (Rate)	2006 Total (Rate)	2007 Total (Rate)	2008 Total (Rate)	2009 Total (Rate)	2010 Total (Rate)	
Total	68 (4.2)	161 (9.8)	50 (3.0)	78 (4.5)	60 (3.4)	250 (13.7)	
Gender	Male	32 (4.0)	73 (9.0)	29 (3.5)	41 (4.7)	29 (3.2)	117 (12.7)
	Female	35 (4.3)	87 (10.6)	21 (2.5)	37 (4.3)	31 (3.5)	133 (14.7)
Race / Ethnicity	White	13 (1.4)	51 (5.6)	15 (1.7)	22 (2.4)	17 (1.9)	85 (9.5)
	Black	11 (5.0)	19 (8.6)	6 (2.6)	13 (5.6)	8 (3.3)	55 (22.4)
	Hispanic	22 (5.5)	48 (11.5)	15 (3.4)	25 (5.1)	23 (4.4)	89 (16.0)
	Other	0 (0.0)	< 5 @	0 (0.0)	< 5 @	< 5 @	8 (6.2)
Age Groups	0-4 yrs	28 (20.9)	50 (37.4)	10 (7.3)	36 (25.7)	22 (15.4)	92 (63.4)
	5-9 yrs	15 (12.4)	64 (52.9)	17 (13.7)	22 (17.3)	16 (12.2)	77 (57.0)
	10-14 yrs	< 5 @	13 (10.6)	< 5 @	5 (4.1)	< 5 @	17 (13.7)
	15-19 yrs	< 5 @	6 (4.9)	0 (0.0)	< 5 @	< 5 @	5 (3.8)
	20-24 yrs	< 5 @	< 5 @	< 5 @	< 5 @	< 5 @	< 5 @
	25-34 yrs	9 (3.5)	12 (4.6)	< 5 @	7 (2.5)	10 (3.4)	32 (10.8)
	35-44 yrs	5 (2.0)	6 (2.4)	6 (2.3)	< 5 @	< 5 @	11 (3.8)
	45-54 yrs	< 5 @	5 (2.2)	5 (2.1)	< 5 @	0 (0.0)	5 (2.0)
	55-64 yrs	< 5 @	< 5 @	< 5 @	0 (0.0)	0 (0.0)	< 5 @
	≥65 yrs	0 (0.0)	0 (0.0)	< 5 @	0 (0.0)	< 5 @	< 5 @

Less than five cases not reported; @ indicates numerator too small for rate calculation

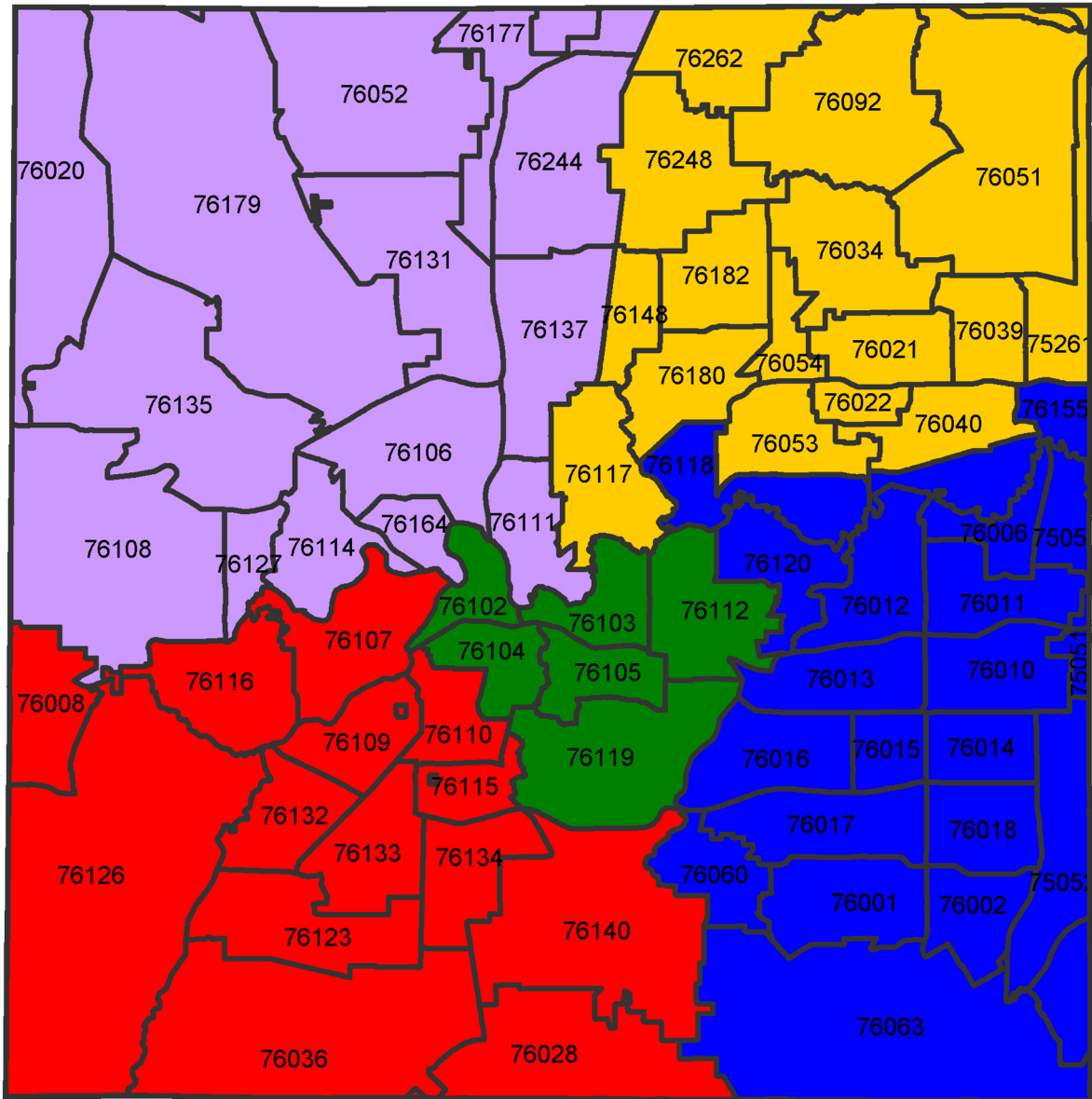
Rates based on less than 20 cases are considered unstable and should be interpreted with caution.

Data source : Tarrant County Public Health

APPENDIX

SUB-COUNTY REGION MAP WITH ZIP CODES, TARRANT COUNTY, 2005-2010

Appendix



- Northwest**
- Northeast**
- Central**
- Southeast**
- Southwest**

These data were prepared by Tarrant County Public Health for its use, and may be revised any time, without notification. Tarrant County Public Health does not guarantee the correctness or accuracy of any features on this map. Tarrant County assumes no responsibility in connection therewith. Said data should not be edited by anyone other than designated personnel, or through written approval by GIS Manager. These data are for informational purposes only and should not create liability on the part of Tarrant County Government, any officer and/or employees thereof.



Tarrant County Public Health

1101 S. Main Street

Fort Worth, TX 76104

(817) 321-5350

www.tarrantcounty.com/ehealth